

What BPMI.org Means for the Enterprise

Jeanne Baker, Sterling Commerce

Ismaël Ghalimi, Intalio

Delphi Group
BPM Summit '01

San Diego - November 3, 2001

-
-
-
-
-

Business Process Management Initiative

Laying the Ground for Standard-based Business Process Management

- Initiated by Intalio, Inc. in July, 2000
- Founded by 16 Members in August, 2000
- 160+ Members in December, 2001
- Independent Organization since June 4, 2001
- More Information: www.bpmi.org

BPMI.org's Definition of Business Process

Genesis of a Polymorphic Concept

Business Process Continuum

❖ Supply-Chain Management

Schönberger, R. J. (1996). *World Class Manufacturing*.

❖ Knowledge Management

Drucker, P. F. (1993). *Post Capitalist Society*.

❖ Customer-Driven

Whiteley, R. C. (1991). *The Customer-Driven Company*.

❖ Business Process

Venkatraman, N. (1991). *Information Technology-Induced Business Reconfiguration*.

❖ Reengineering

Hammer, M. (1990). *Don't automate, obliterate*.

❖ Excellence

Peters, T. J. & Waterman, R. H. (1982). *In Search of Excellence*.

❖ Value-Chain

Porter, M. E. (1980). *Competitive Advantage*.

-
-
-

BPMI.org's Definition of Business Process

Courtesy of Thomas H. Davenport, Accenture

A process is a specific ordering of work activities across time and place, with a beginning, an end, and clearly-defined inputs and outputs: a structure for action.

Thomas H. Davenport

-
-
-
-
-

Summary

What BPMI.org Means for the Enterprise

1. Working Methodology for BPM

2. Complementary Standards for BPM

3. Interoperable Products for BPM



Problem



-
-
-

Business Processes in the Enterprise

A Need Remaining to be Addressed

❖ CXOs Want Business Processes

"Business Process Management delivers the intelligence that leads to millions in savings." GartnerGroup.

❖ CIOs Cannot Deliver Without:

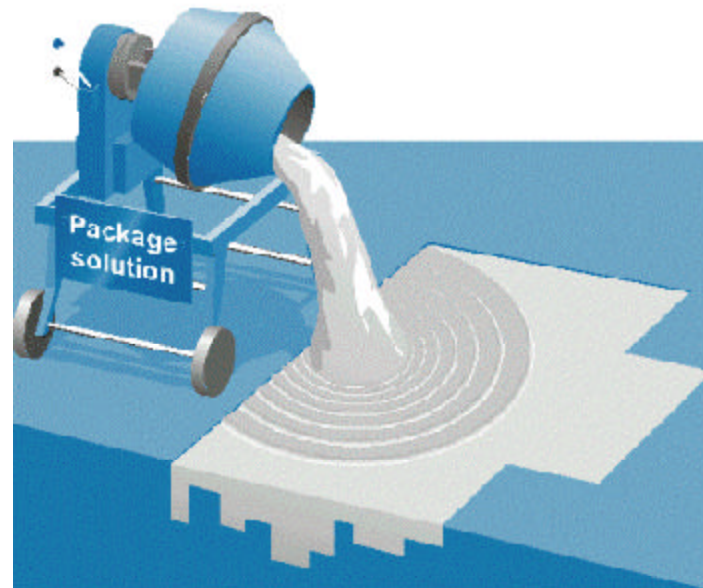
1. A Methodology
2. A Standard
3. An Infrastructure

-
-
-

What we did before

Business Process Re-Engineering (BPR) and Enterprise Resource Planning (ERP)

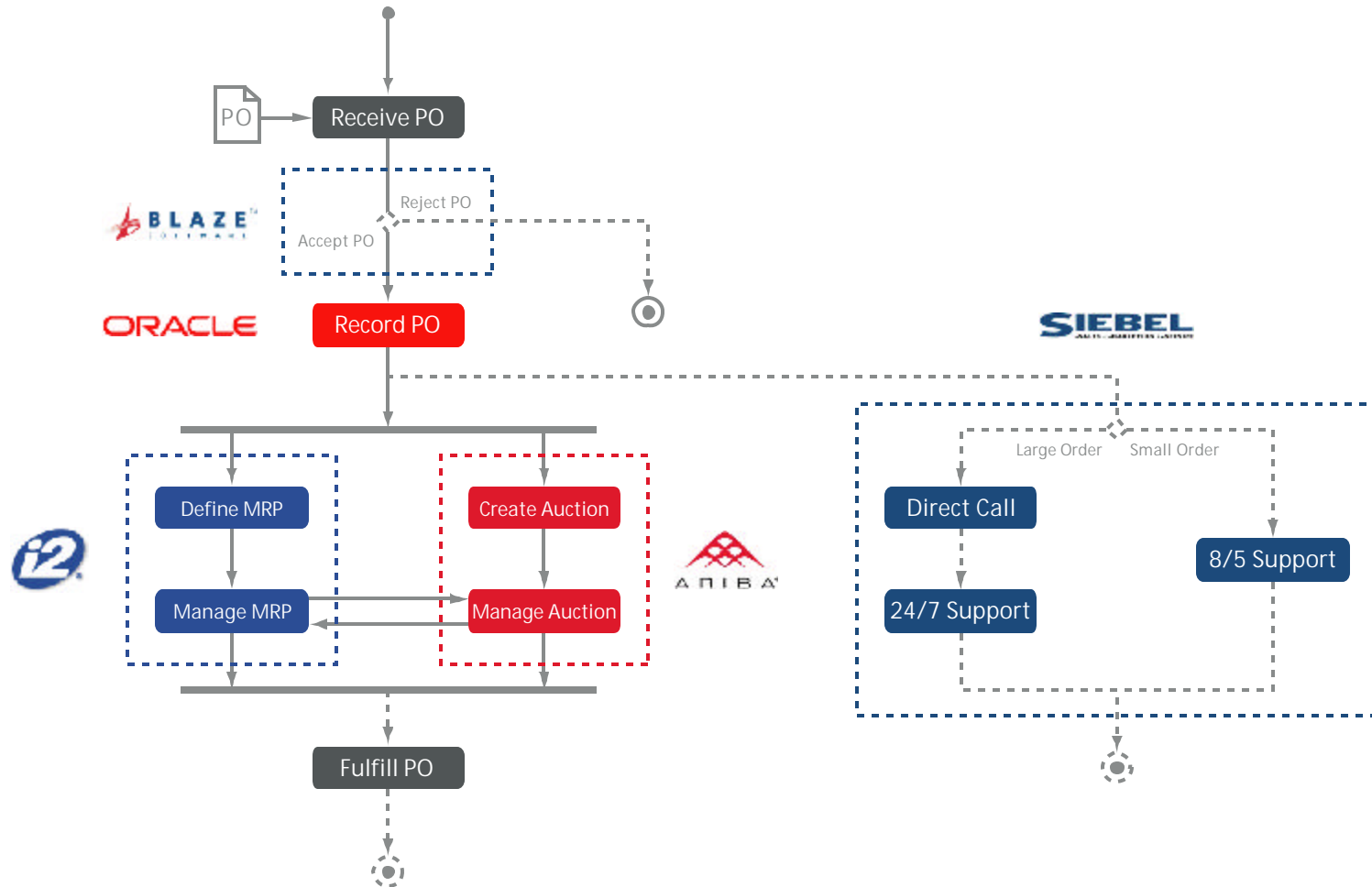
BPR and ERP were typically One-Time Events...



...with Insufficient Attention to Change.

What we want today

Collaborative & Transactional Business Processes



- • •
- •

Today's eBusiness Process Integration Cycle

- An Entropic Cycle Disfiguring Business Processes

❖ Example: Supply-Chain

Process Model



1. Modeling

i2, Manugistics

CPFR.org

Today's eBusiness Process Integration Cycle

An Entropic Cycle Disfiguring Business Processes

❖ Example: Supply-Chain

Process Model



1. Modeling

i2, Manugistics
CPFR.org



2. B2Bi

webMethods, Extricity
RosettaNet, ebXML, BizTalk



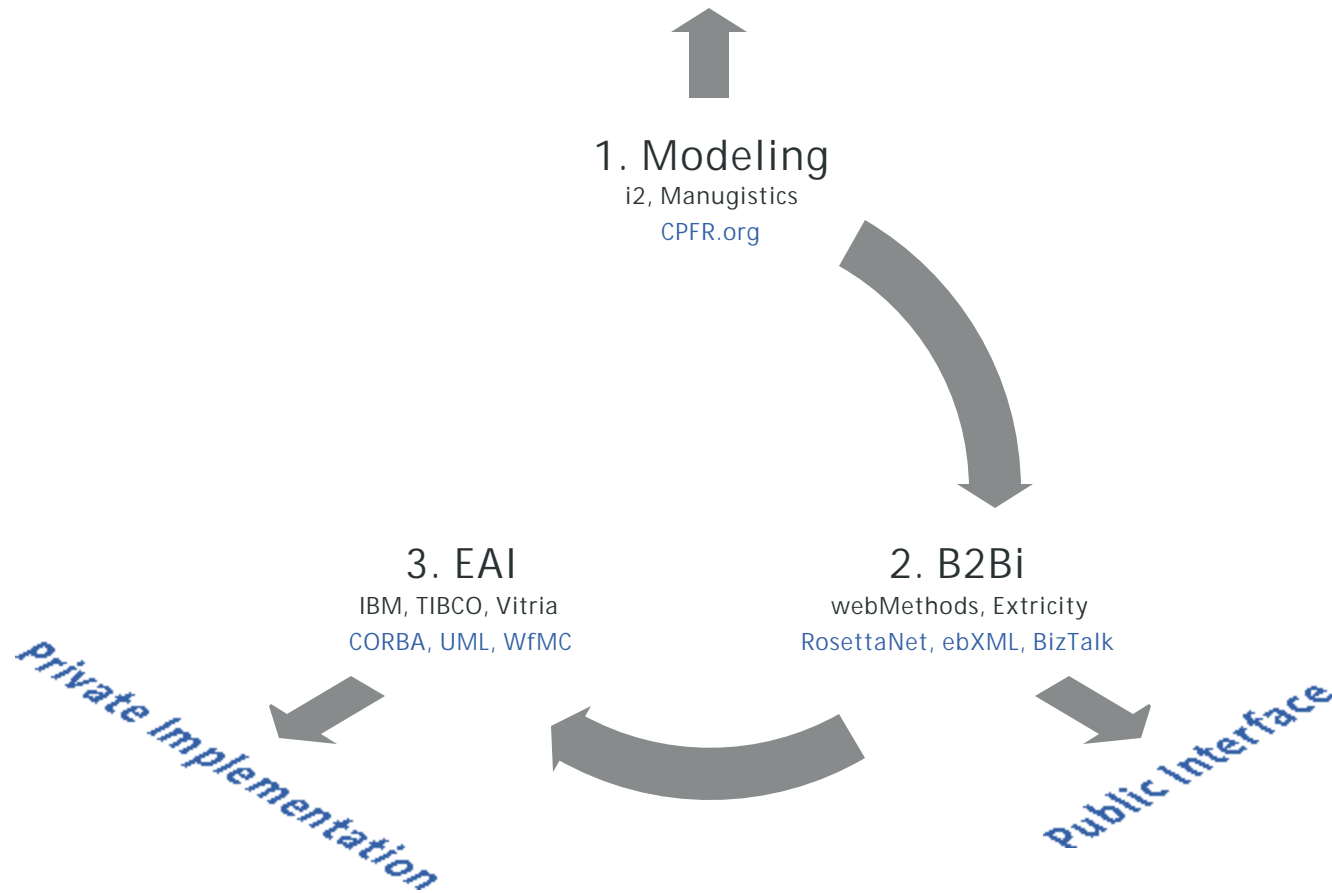
Public Interface

Today's eBusiness Process Integration Cycle

An Entropic Cycle Disfiguring Business Processes

❖ Example: Supply-Chain

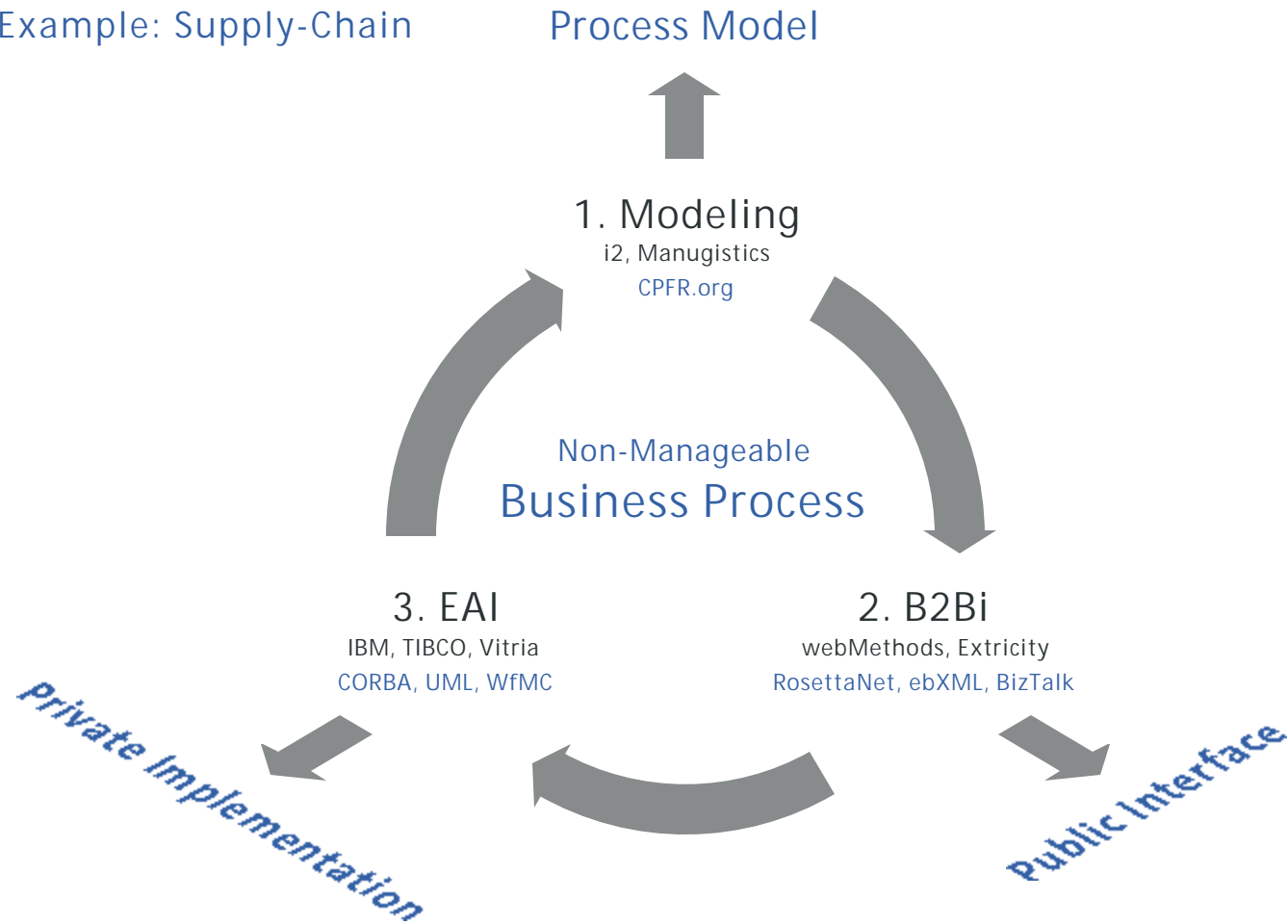
Process Model



Today's eBusiness Process Integration Cycle

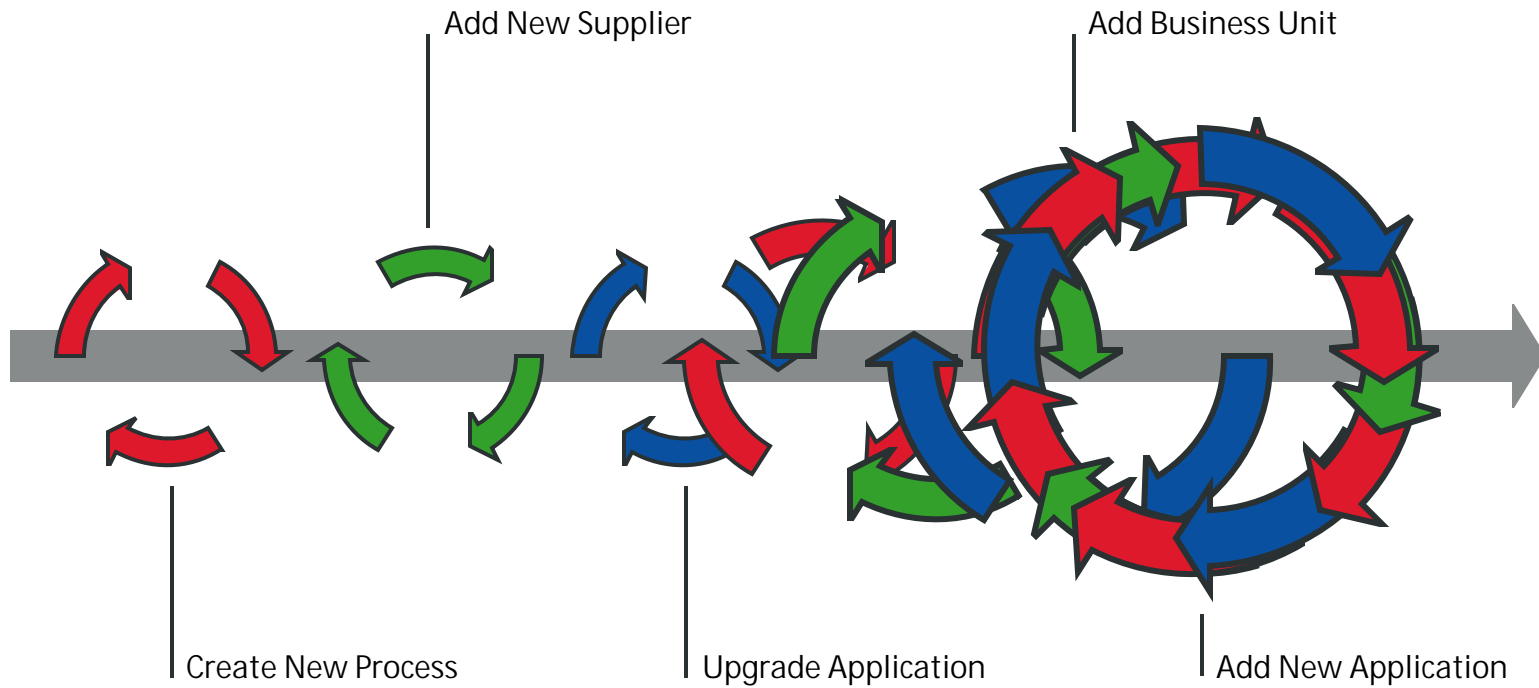
An Entropic Cycle Disfiguring Business Processes

❖ Example: Supply-Chain



Today's eBusiness Process Integration Cycle

An Entropic Cycle Disfiguring Business Processes



-
-
-

The Need for Business Process Management

What Makes Enterprise Software Work

1. A Methodology...

Fixing the Process Integration Cycle

2. A Standard...

Formalizing the Methodology

3. An Infrastructure...

Implementing the Standard

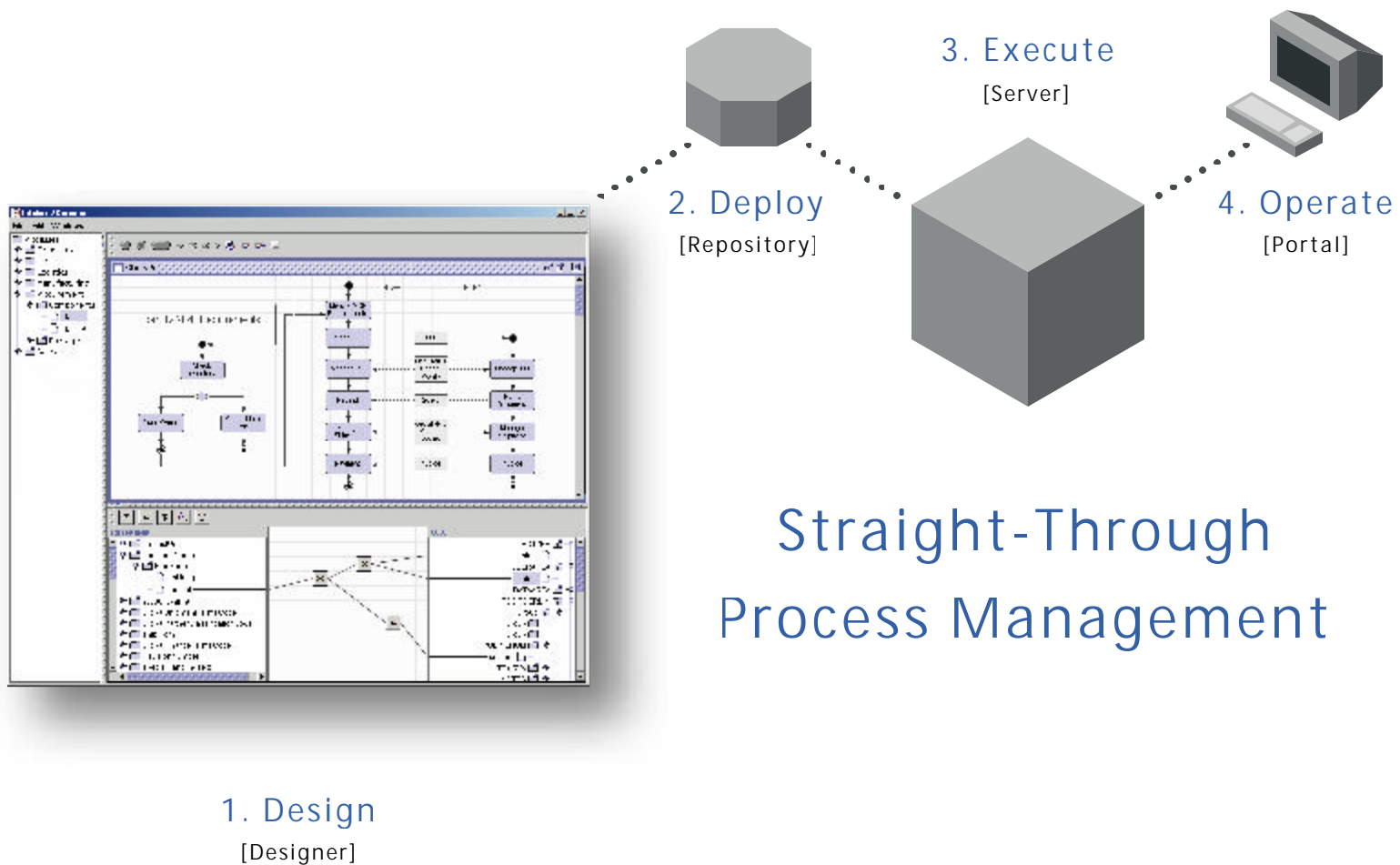
-
-
-
-
-

Solution



Business Process Management Methodology

Toward Straight-Through Process Management



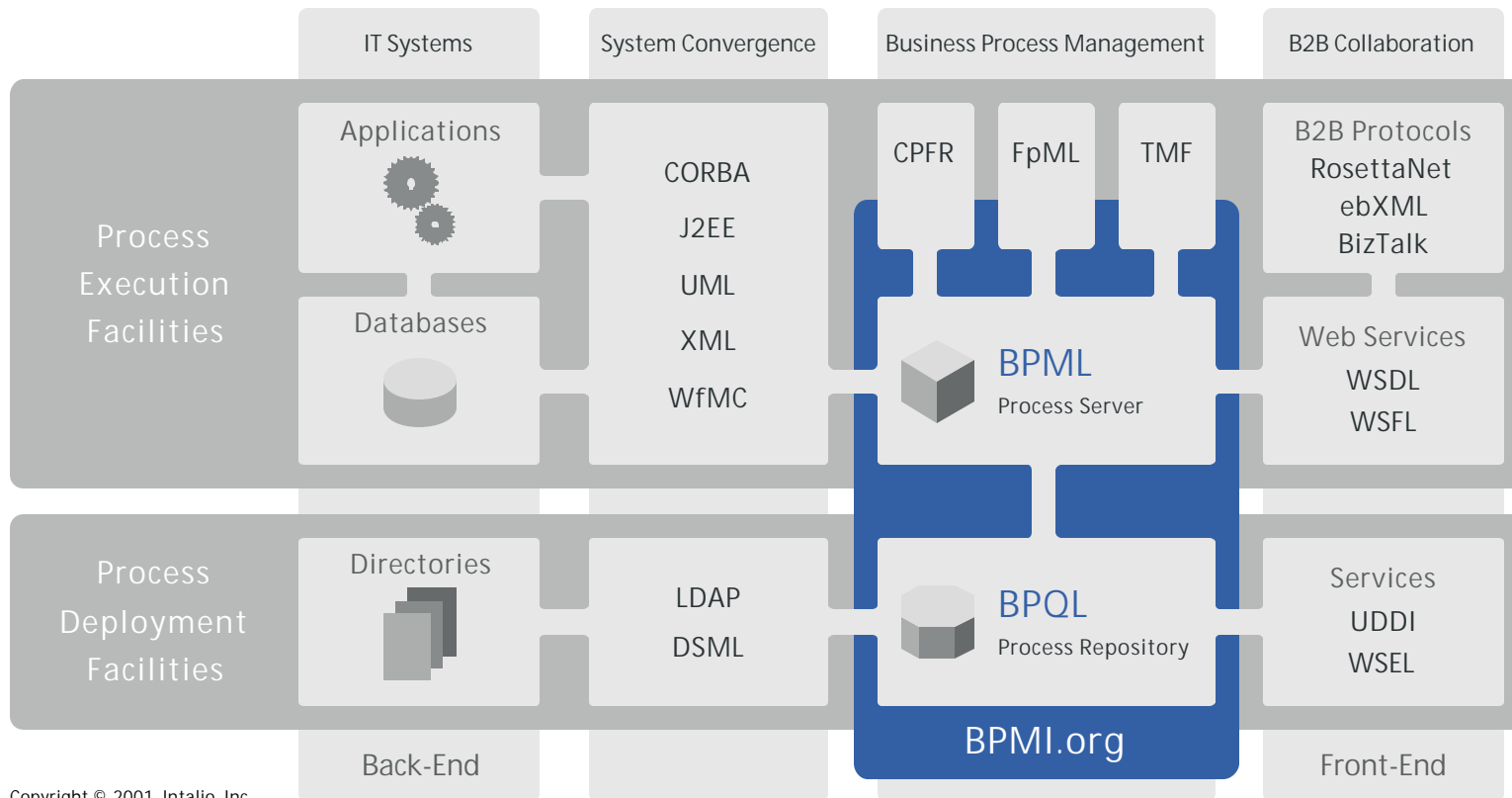
Business Process Management Initiative

More information: <http://www.bpmi.org/>



BPMI.org in the BPM Landscape

Toward Standard-Based Business Process Management

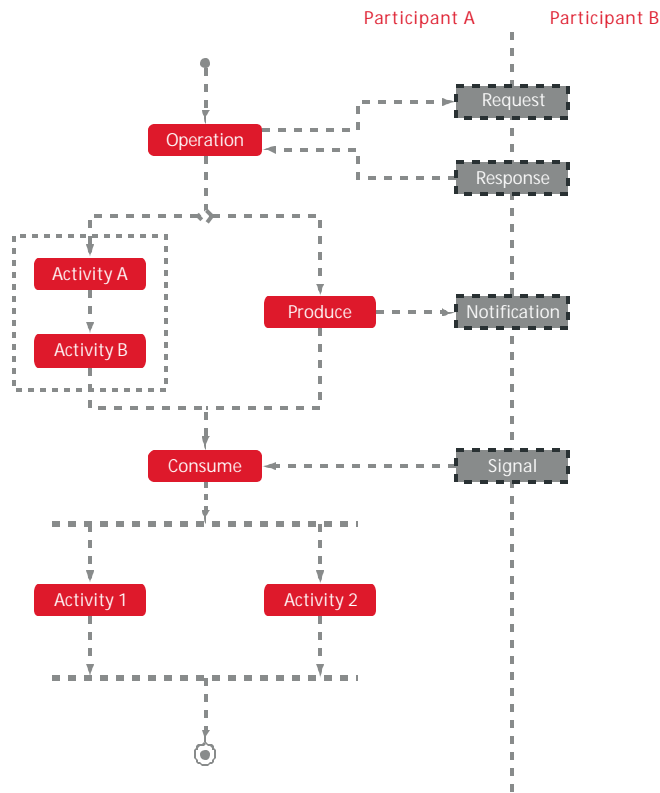


Copyright © 2001, Intalio, Inc.

Business Process Modeling Language

The Vector for Straight-Through Process Management

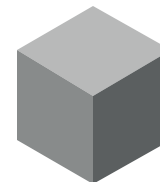
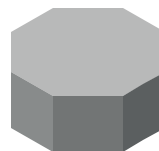
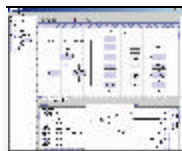
BPMN



BPML

```

<process name="processName">
  <message name="request" type="request">
    <!-- XML schema -->
  </message>
  <sequence>
    <operation name="operation">
      <participant name="ParticipantB"/>
      <output message="request"/>
      <input message="response"/>
    </operation>
    <choice>
      <select>
        <case ref="rule1" activity="produce"/>
        <case ref="rule2" activity="trans"/>
      </select>
      <produce name="produce">
        <participant to="ParticipantB"/>
        <output message="notification"/>
      </produce>
      <sequence>
        <transaction name="trans" type="new"
          model="coordinated"/>
        <activity name="activityA"/>
        <activity name="activityB"/>
      </sequence>
    </choice>
    <consume name="consume">
      <participant name="ParticipantB"/>
      <input message="signal"/>
    </consume>
    <all>
      <activity name="activity1"/>
      <activity name="activity2"/>
    </all>
  </sequence>
</process>
  
```



-
-
-
-
-

BPMI.org Standards

Three Standards for Managing the Full Lifecycle of Business Processes

1. BPMN

Business Process Modeling Notation (Design)

2. BPML

Business Process Modeling Language (Deployment & Execution)

3. BPQL

Business Process Query Language (Maintenance & Optimization)

Upcoming Developments: Web Services, End-User Workflow, etc.

-
-
-
-
-

Result

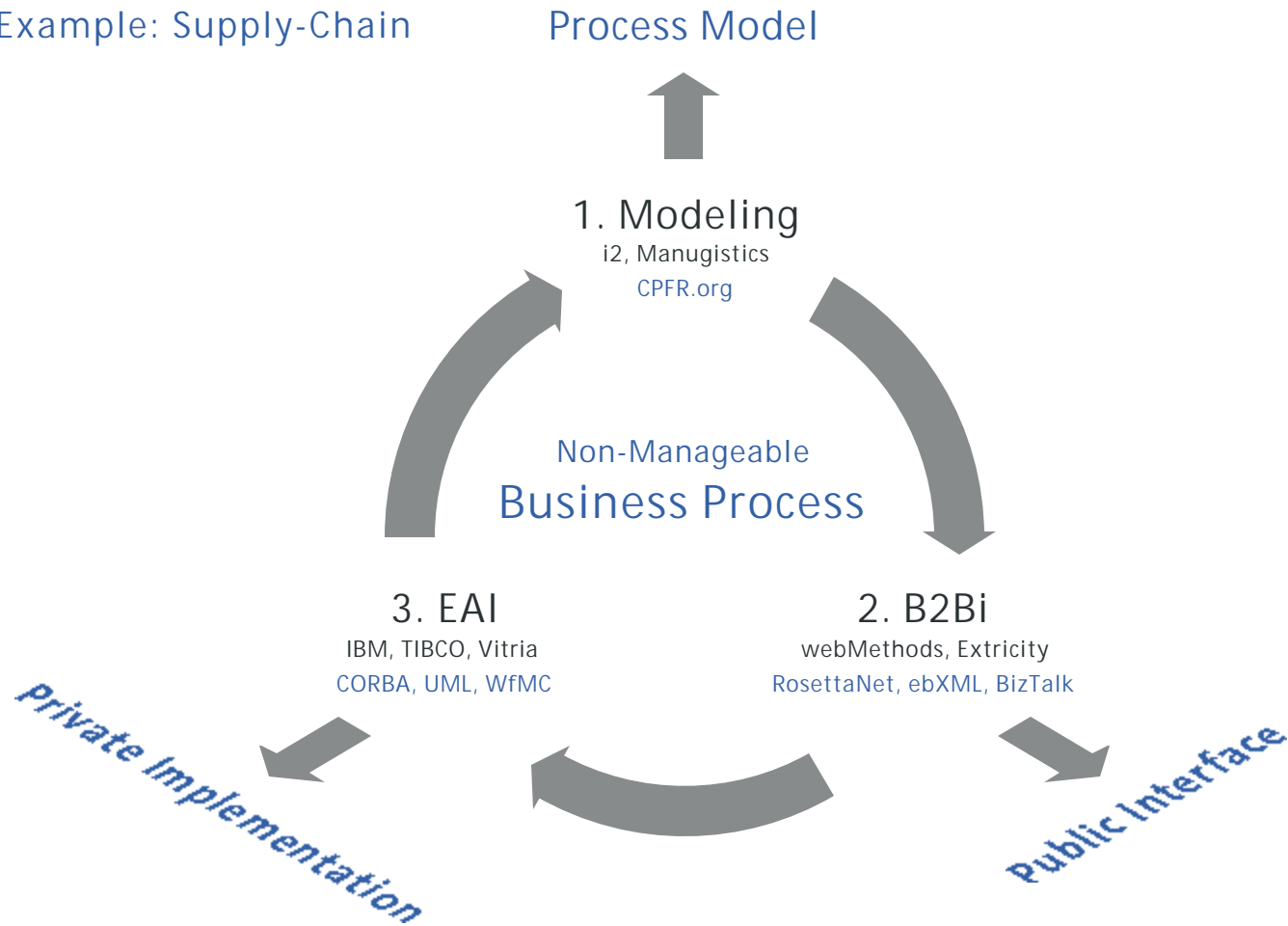


- • •
- •

Business Process Integration

- The Broken Cycle

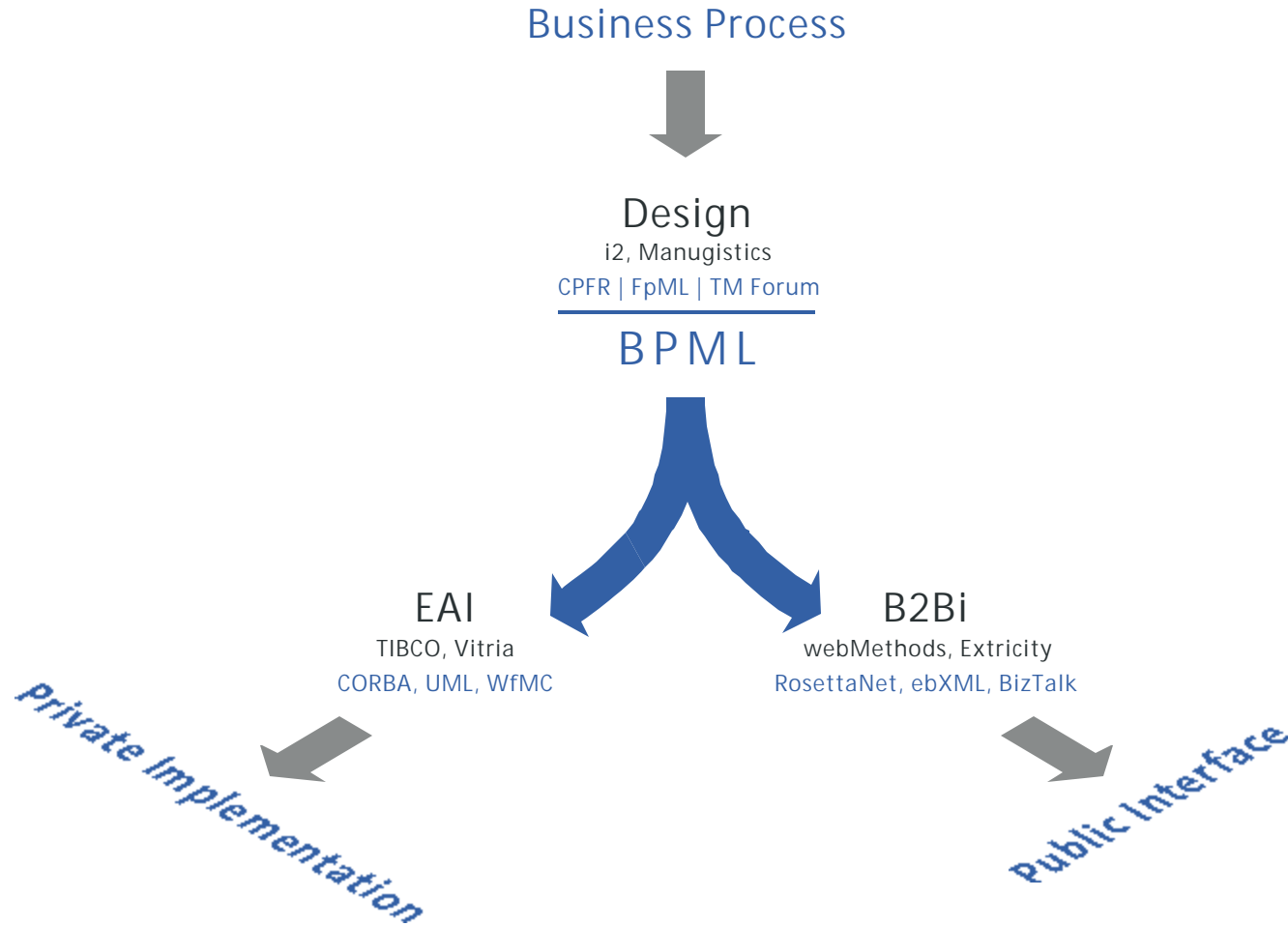
❖ Example: Supply-Chain



-
-
-

Business Process Management

The Working Solution



-
-
-

Next Steps

- What the Enterprise can expect from BPMI.org and BPM Vendors

- ❖ BPM Systems enabling Web Services
- ❖ BPM Systems enabled by Web Services
- ❖ Fusion of EAI, B2Bi, and Workflow into BPM
- ❖ BPM RAD Tools interoperating with BPM Systems
- ❖ Enterprise Applications as Processes

-
-
-
-
-

Next Steps

What the Enterprise can expect from BPM

1. Reduced Costs of Process Ownership
2. Optimized Business Processes
3. Business Agility

-
-
-

Reality Check

- What is available Today

- ❖ 10+ BPMN-enabled Modeling Tools under development
- ❖ 10+ BPML-enabled Process Servers under development
- ❖ 3 BPML/BPMN-enabled BPM Systems already released
- ❖ UML 2.0 to use BPMN for Process Modeling
- ❖ ERP Vendors to support BPML in their applications

-
-
-
-
-

www.bpmi.org | info@bpmi.org

