

Business Enterprise Integration Domain Task Force (BEIDTF)

Meeting Notes from Burlingame Meeting

January 31, February 1, 2005

Monday, January 31, 9:00-17:00, BEIDTF Plenary

Approximately 50 people attended the Monday sessions.

Morning

Organization Structure Metamodel RFP initial Submissions

Three initial submissions were presented for the OSM RFP:

Pete Rivett presented the Adaptive, EDS, 88Solutions submission (presentation at bei/2005-02-02).

Stan Hendryx presented on the Hendryx and Associates submission (presentation at bei/2005-02-01).

Antoine Lonjon presented the MEGA International submission (presentation at bei/2005-02-03).

Afternoon

Vote to open the voting list for the BPDM RFP

This issue was raised at the last meeting and deferred until this meeting so that there could be adequate notice to voters. The motion was to open the voting list for 4 weeks, to close again on February 28. The motion passed without opposition.

Business Semantics of Business Rules (BSBR) revised submission

John Hall and Don Baisley presented the Business Rules Team submission. There was considerable discussion of the examples. The presentation is to be posted as bei/2005-02-04.

Fujitsu has joined as a submitter of the BRT proposal.

Vote on a revised submission date for BSBR

The BSBR submitters have identified some additional work to complete the submission. In addition, concerns were raised regarding reconciliation with the Ontology Definition Metamodel being proposed to the ADPTF with a final submission date of May 30, 2005.

A motion to change the revised submission date for BSBR to March 21, 2005, was passed without opposition.

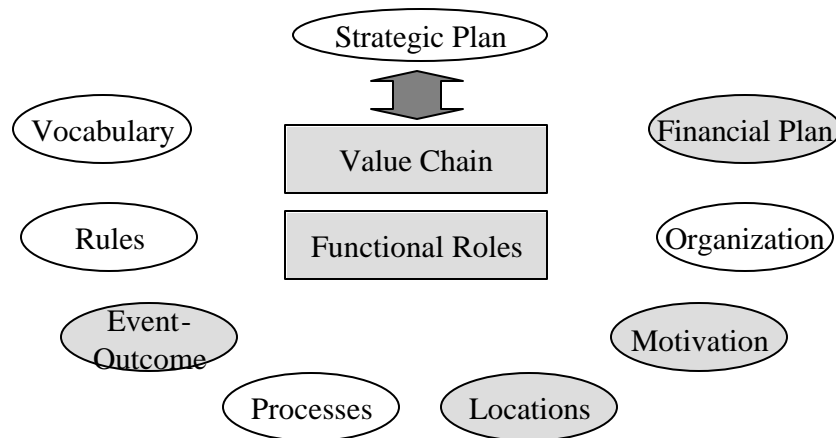
Business Motivation Model overview

John Hall presented a brief overview and update on the Business Motivation Model from the Business Rules Group. We had hoped that this could be considered for a RFC (Request for Comment) adoption at this meeting, but due to other demands, efforts to prepare the specification as a proposed OMG specification were not completed in time, so it will be considered at the April meeting.

Business modeling roadmap

The Business Motivation Model was used as a starting point for discussion of a business modeling roadmap. John's presentation identified where the BMM would tie into business rules, business process and organization models.

Fred Cummins presented an abstract slide of business models as a structure for discussion. The diagram is shown, below.



The clear bubbles identify where there is already work under way (BMM, BSBR, BPDM and OSM). The gray bubbles are potential future areas. The Value Chain is a common perspective in business modeling. The Functional Roles break this down into functions that accomplish the value chain transformation. Event-outcome focuses on business events and the desired outcome of those events. Locations deal with the geographic separation of resources and organizations for consideration of effects on the business. Motivation deals with motivation of individuals within the organization. Financial Plan would deal with budgets, assets and possibly cash flow.

There was considerable discussion and suggestions for additional bubbles/models:

- ?? Business Cycles
 - o Planning horizons

- Schedules
- ?? Resources (ERP?)
- ?? Metrics (Dashboard)
 - Units of measure
- ?? Authorization/Security/Privacy
- ?? Competencies
- ?? Products and Services
- ?? Location—high level of granularity, specificity
 - Logistics?

A vote of interests was collected where each voter identified up to three topics of interest. The results were as follows (not all present submitted their vote).

Metrics	7
Resource	6
Location	5
Financial Plan	4
Value Chain	3
Event-Outcome	2
Business Cycles	2
Competencies	1
Time	1
Authorization	1
Compliance (regulatory)	1
Functional Role	1

There will be further discussion of the roadmap at the next OMG meeting.

Tuesday, February 1, 9:00-17:00, BEIDTF Plenary

Approximately 50 people attended the Tuesday sessions.

Morning

Business Rules Management RFI Presentation

Atul Apte presented the iConexio Technologies response to the Business Rules Management RFI. His presentation will be posted as [bei/2005-02007](#).

Business Rules Management RFP discussion

Paul Vincent presented a summary of the RFI responses as a starting point for discussion of an RFP (see [bei/2005-02-05](#)). The key areas of interest appear to be in the organization, application and traceability of rules from an abstract (CIM?) level (e.g., BSBR) to an operational (PIM) level (e.g., PRR and BPDM).

Update on Production Rules Representation

Paul Vincent gave a brief report on the status of work on a joint PRR submission. An initial metamodel has been defined and is being evaluated against examples.

Afternoon

13:00 Joint meeting with WfMC and BPMI Representatives

Steve White organized a discussion of the relationship of XPDL (XML Process Definition Language) from the Workflow Management Coalition (WfMC), but Steve was only able to attend by phone. Keith Swenson, leader of the XPDL development effort gave a presentation on XPDL. Jean Baker of Business Process Management Initiative (BPMI) joined in the discussion. There is intent in the WfMC community to reconcile XPDL with BPMN (Business Process Modeling Notation) from BPMI. There has also been discussion in WfMC about creating a metamodel for XPDL. There was some discussion of the OMG BPDM (Business Process Definition Metamodel) specification but since it is still being resolved by joint submitters, this discussion was limited. We expect more extensive discussions after the revised BPDM submission becomes available for the April meeting. Keith's presentation will be posted as bei/2005-02-08.

15:00 Process Modeling AB SIG Initial Meeting

The Architecture Board chartered the Process Modeling SIG on Monday afternoon. J.D.Baker, Vivienne Suen and Steve White are co-chairs. This initial meeting was joint with BEIDTF. J.D. gave an overview presentation of the background for forming the SIG. There are a number of process specifications both within OMG and outside OMG. The Architecture Board is concerned that redundant specifications be avoided and that OMG specifications have appropriate consistencies. Within OMG there is UML activity diagrams, SPEM (Software Process Engineering Metamodel), EDOC and the BPDM effort. Outside OMG there are a number of specifications including XPDL, BPMN, BPML, BPEL, WCDL and BPSS.

Fred Cummins

Co-Chair