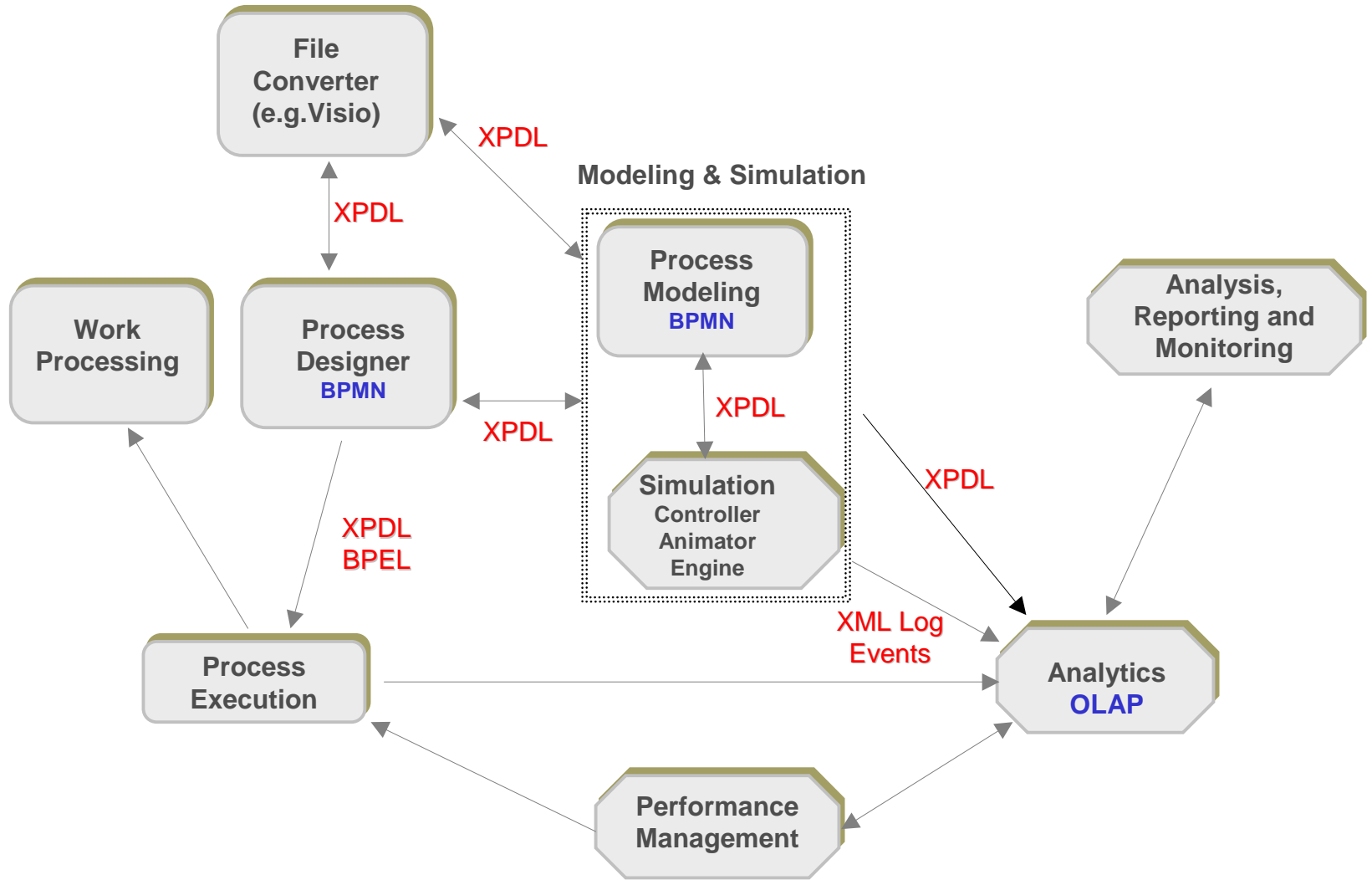


XPDL 2.0 and BPMN Roundtable

May 2006

- How do process modellers share models?
- How important is it to preserve models?
- Is one modelling environment sufficient for everyone?
- What concerns do people have about saving process models in a proprietary format?
- What specialized process design components exist that might need to cooperate?
- Are there viable alternatives to BPMN?
- What other notations beyond process notation should be considered for a full environment?

An Example of Standards Utilization

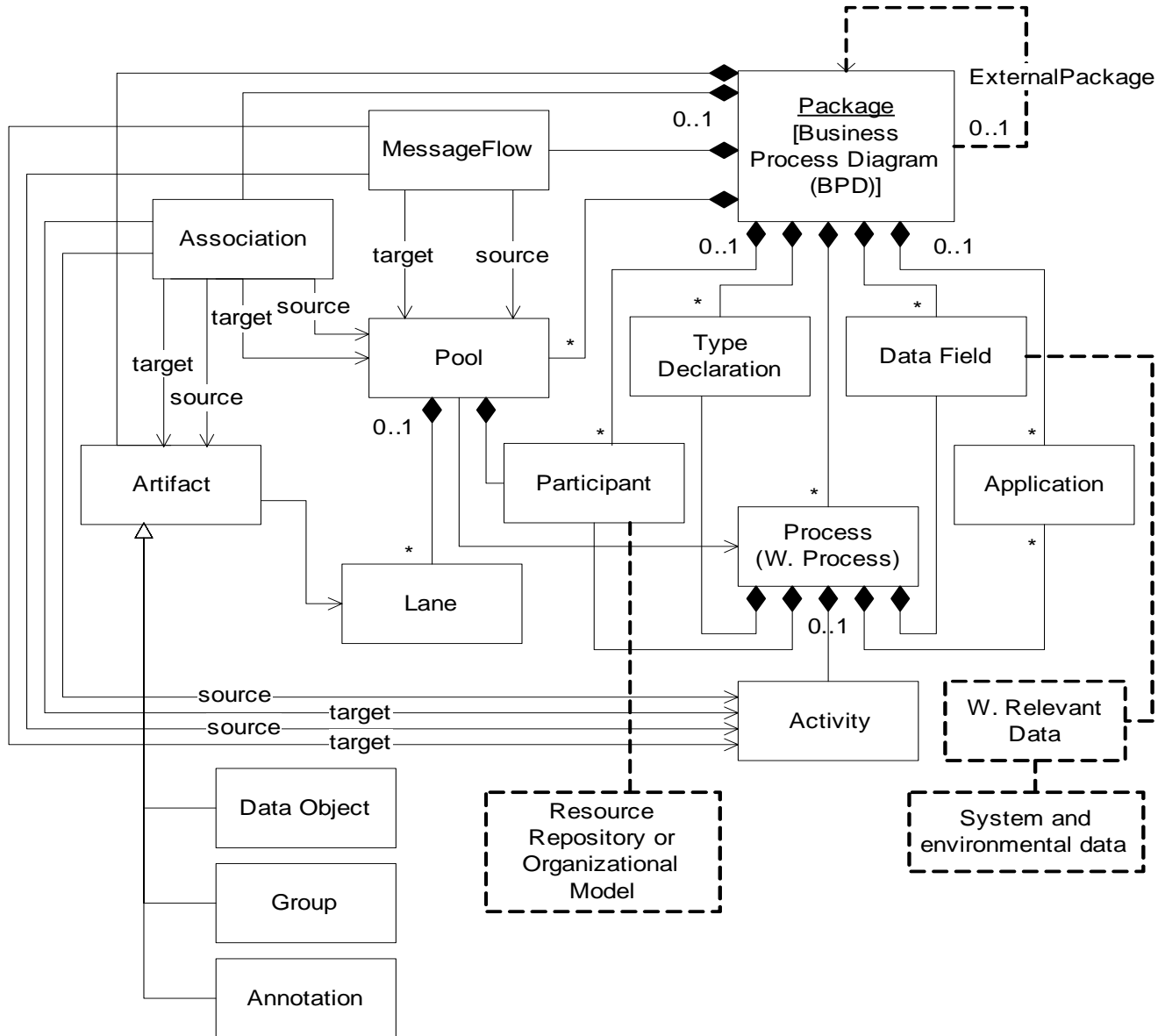


Capabilities of a Standard Format

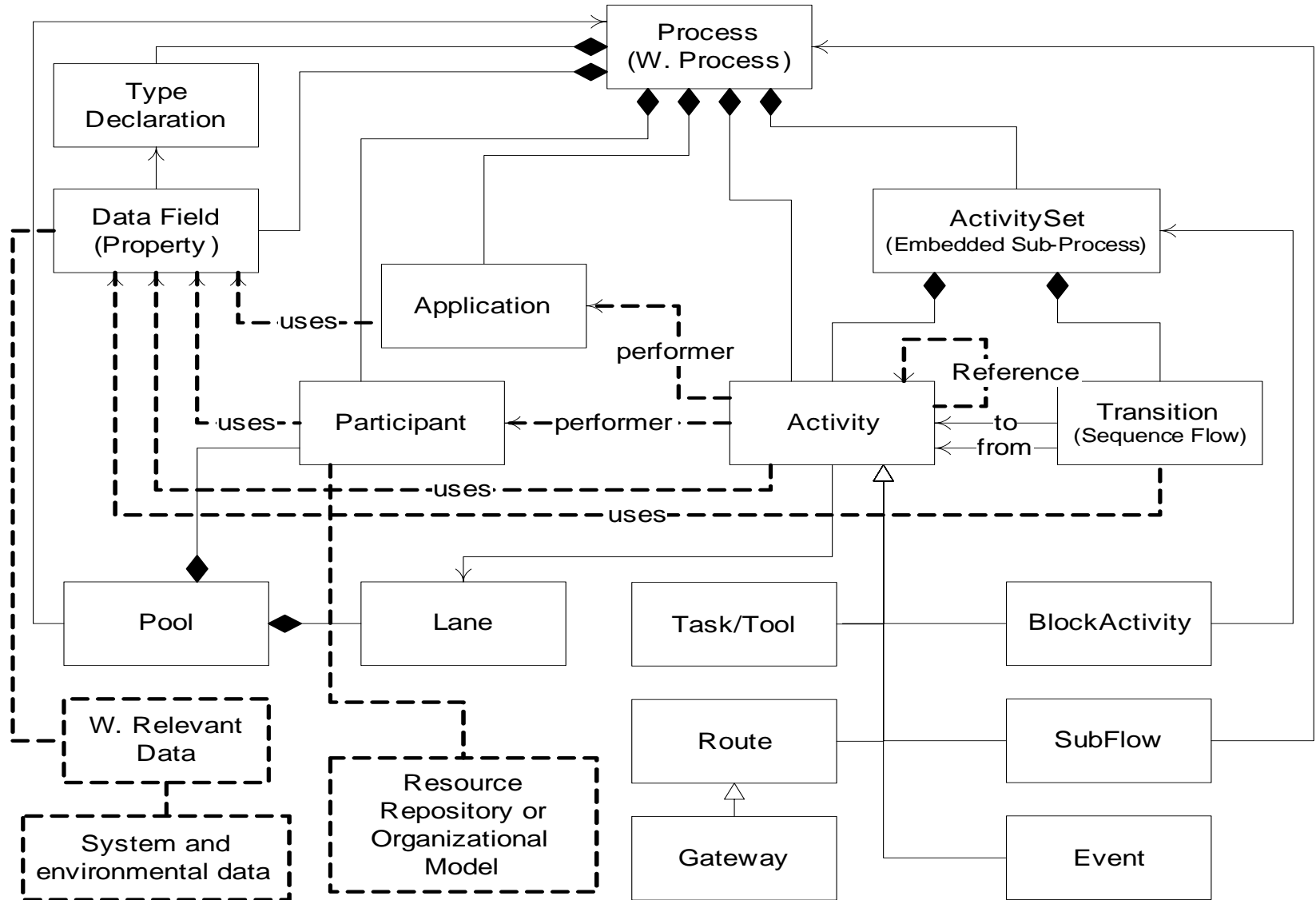
Assume we want a standard file format:

- What capabilities must a standard process model file format have?
- What disadvantages exist in a standard file format?
- Should individual tool variations be accommodated, or prohibited?
- How can extensions be cleanly added to afford both upward and downward compatibility?
- Graph Oriented or Block Structured?
- How important is graphical information (notation coordinates, size, arrow paths, etc.)
- What about BPEL? BPEL4People? BPDM?

XPDL Package Meta-Model



XPDL Process Meta-Model



The Workflow Reference Model

