



# Web Services - Conceptualisation to Design

---

David Piper  
Principal Consultant

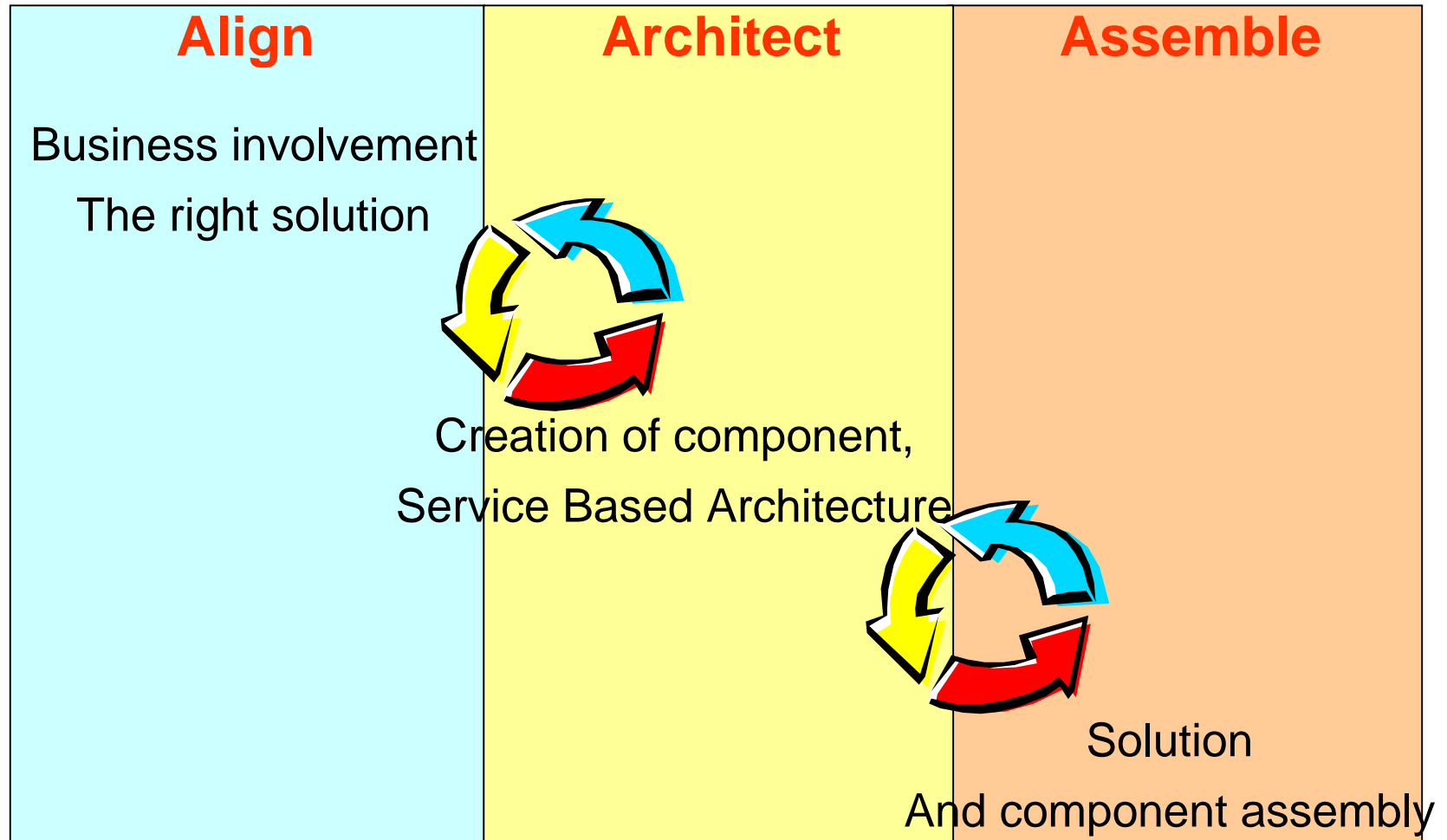


# Agenda

---

- Process – Select Perspective
- Supply-Manage-Consume
- Understanding the Business
- Understanding the Requirements
- Identifying Business Services
- Identifying Web Services
- The Provisioning Architecture
- Web Services Provisioning
- Wrapping Web Services

# Select Perspective



# Supply-Manage-Consume



## SUPPLIERS

**Data Architecture**

**Technical Architecture**

**Component Delivery**

Service Requests

**MANAGE**

**Component Management**

Components

Business  
Needs

## CONSUMERS

**Business Alignment**

**Business Architecture**

**Increment Planning**

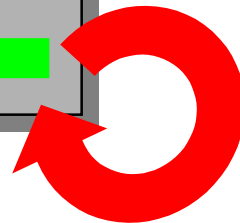
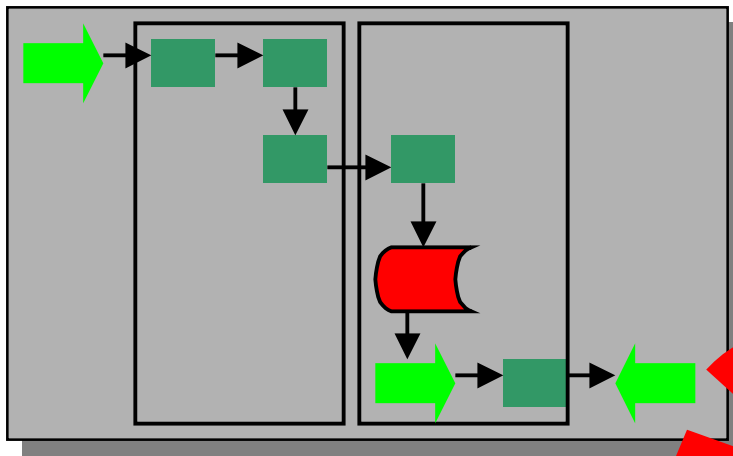
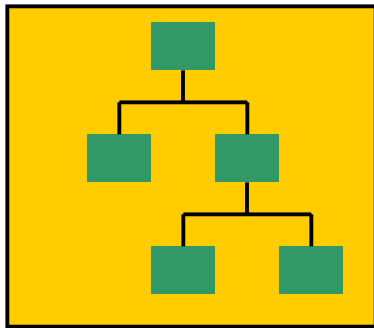
**Solution Delivery**

**Solution Rollout**

Business  
Solutions



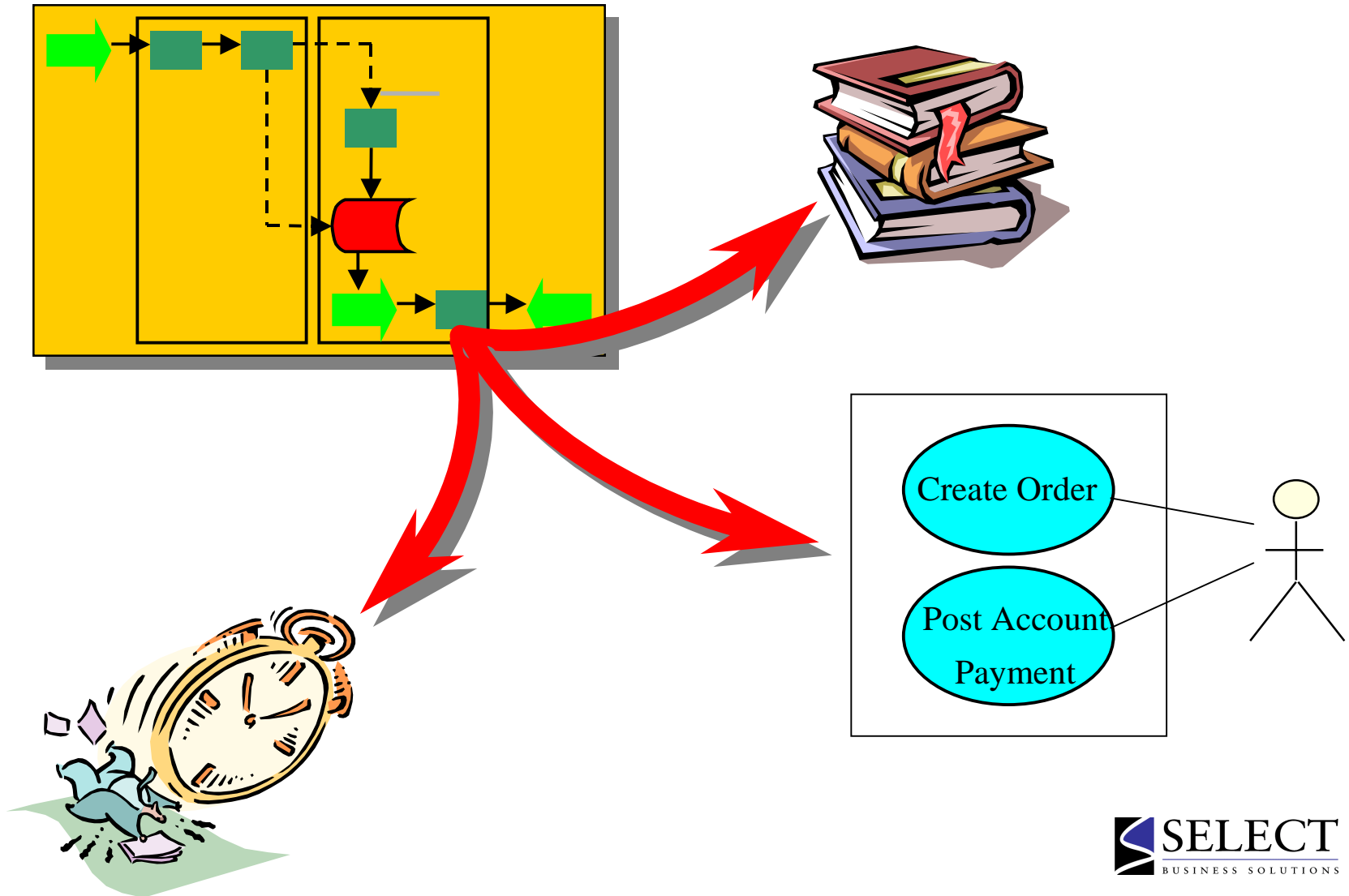
# Understanding the Business - BPM



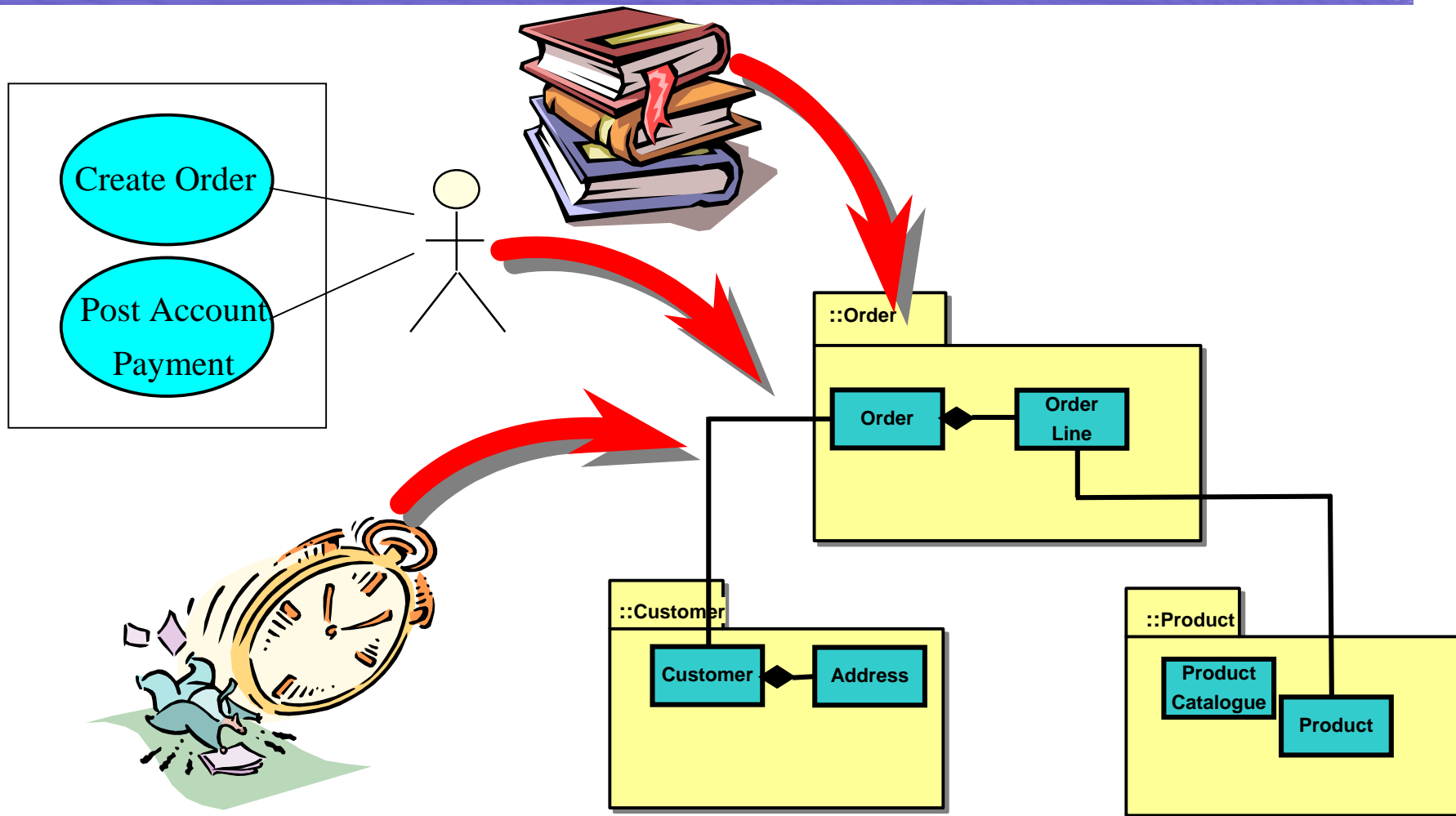
Business Change

- Common language for understanding the business domain
- Support for business change
- Identification of solution requirements
- Trace through to IT solutions
- Scope the boundary of IT solutions
- Prioritise solution requirements
- Expression of abstract service needs e.g. BPML or Biztalk

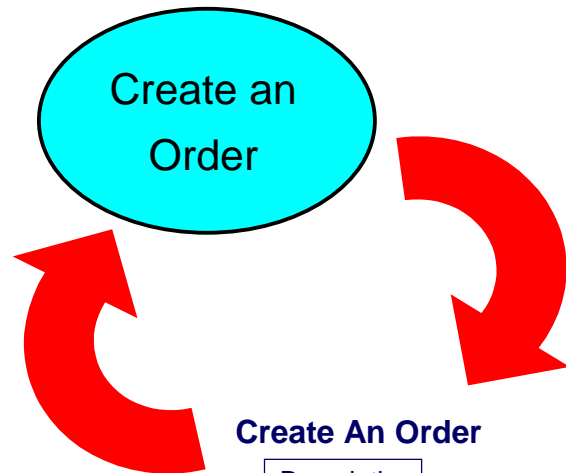
# Understanding Requirements – Use Cases and...



# Business Architecture



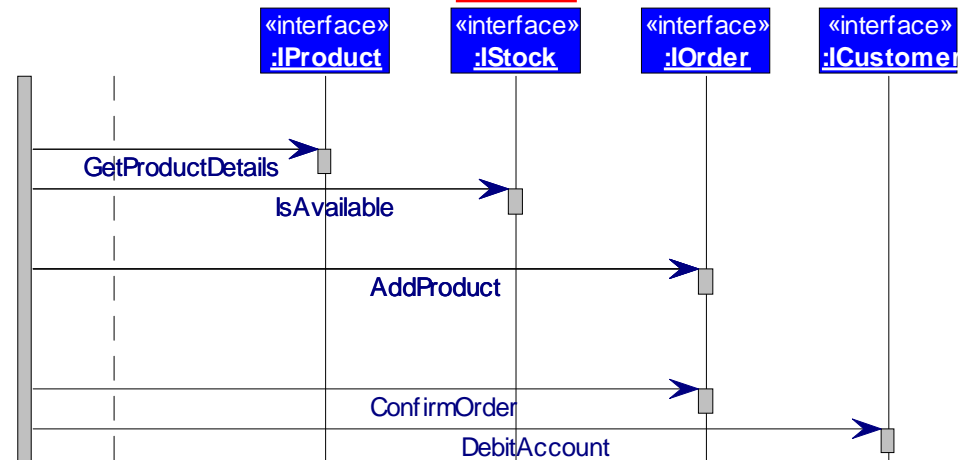
# Identifying Business Services - Interactions



## Create An Order

Description

```
For Each Line in the Order
  Retrieve Product Information
  Confirm Availability
  If Product Available
    Add to Order
  End If
End For
Confirm the Order
Debit Customer's Account
```





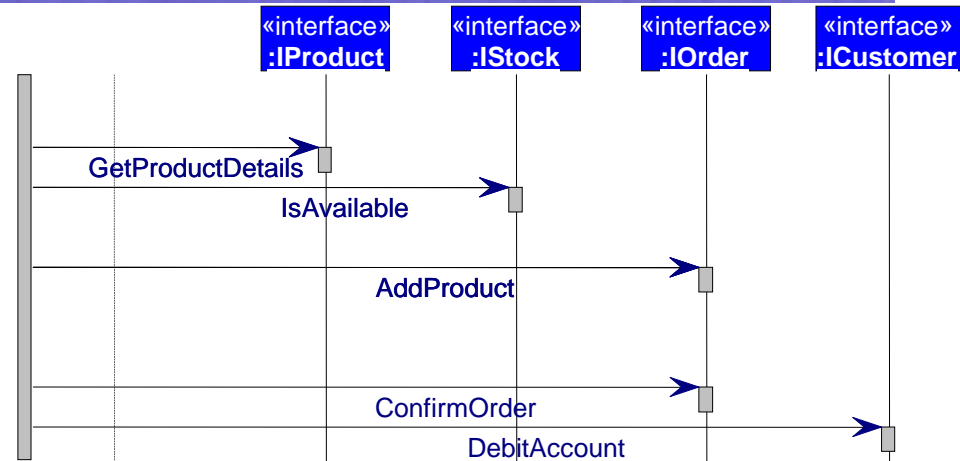
# Identifying Web Services

## Create An Order

Description

```

For Each Line in the Order
  Retrieve Product Information
  Confirm Availability
  If Product Available
    Add to Order
  End If
End For
Confirm the Order
Debit Customer's Account
    
```

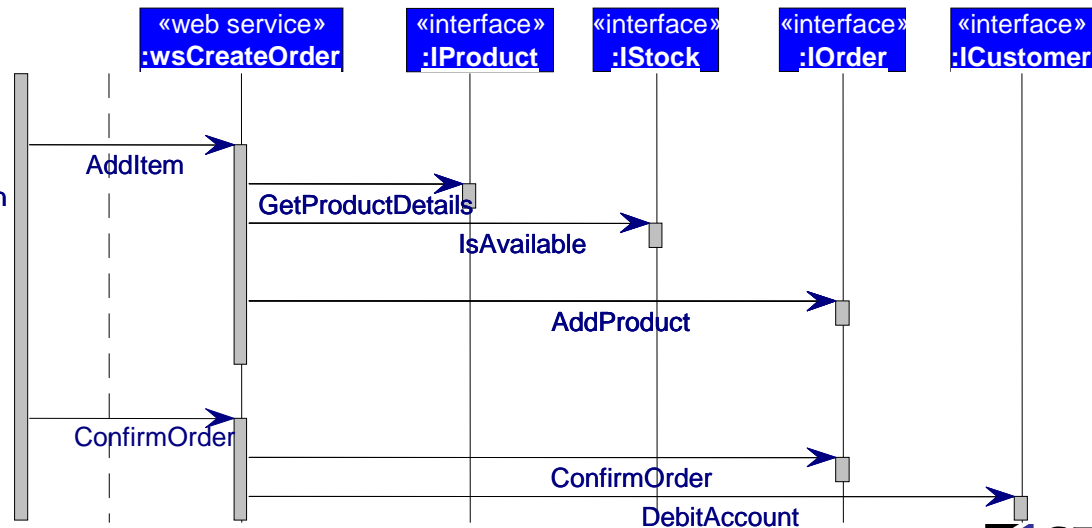


## Create An Order

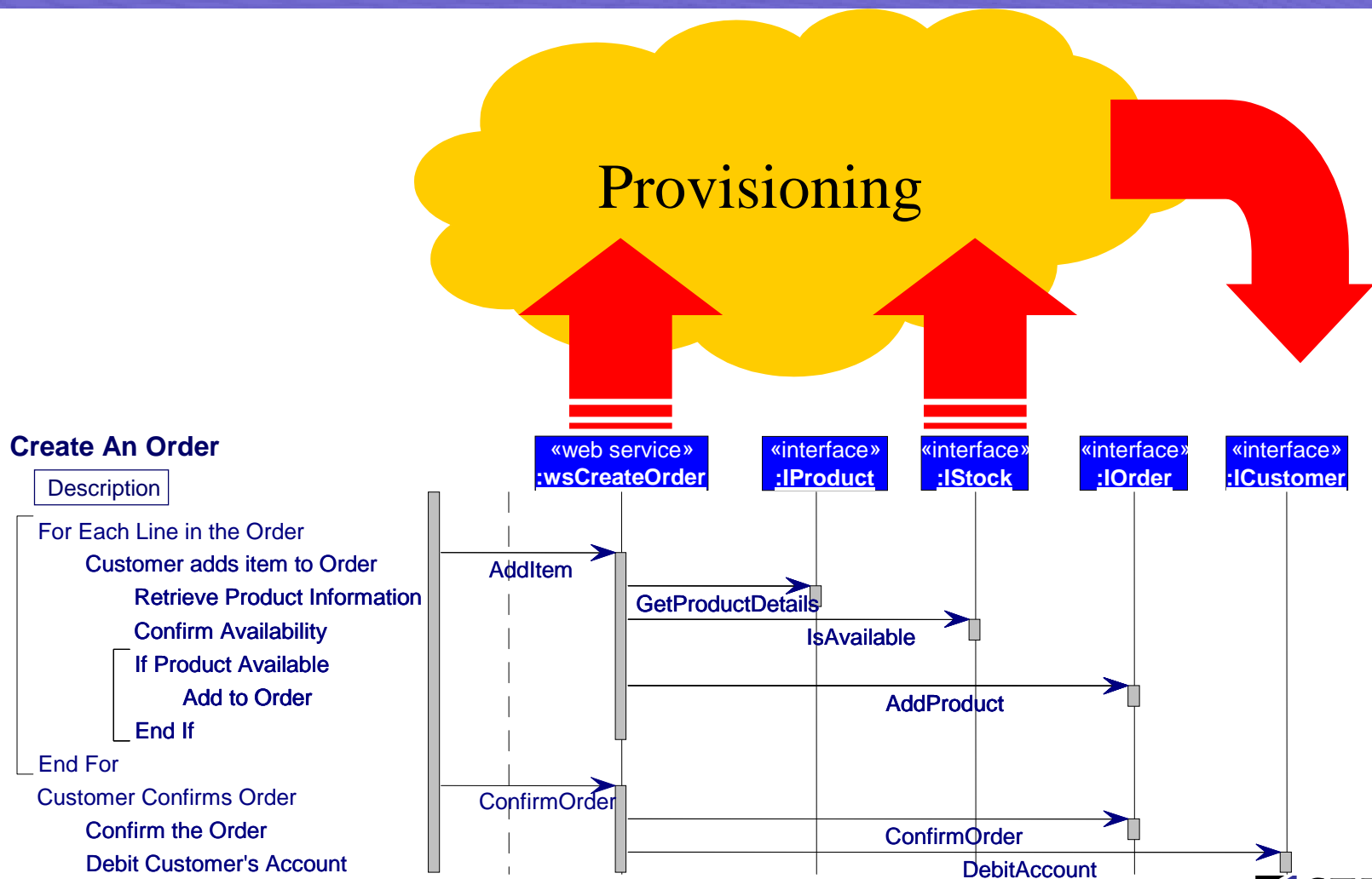
Description

```

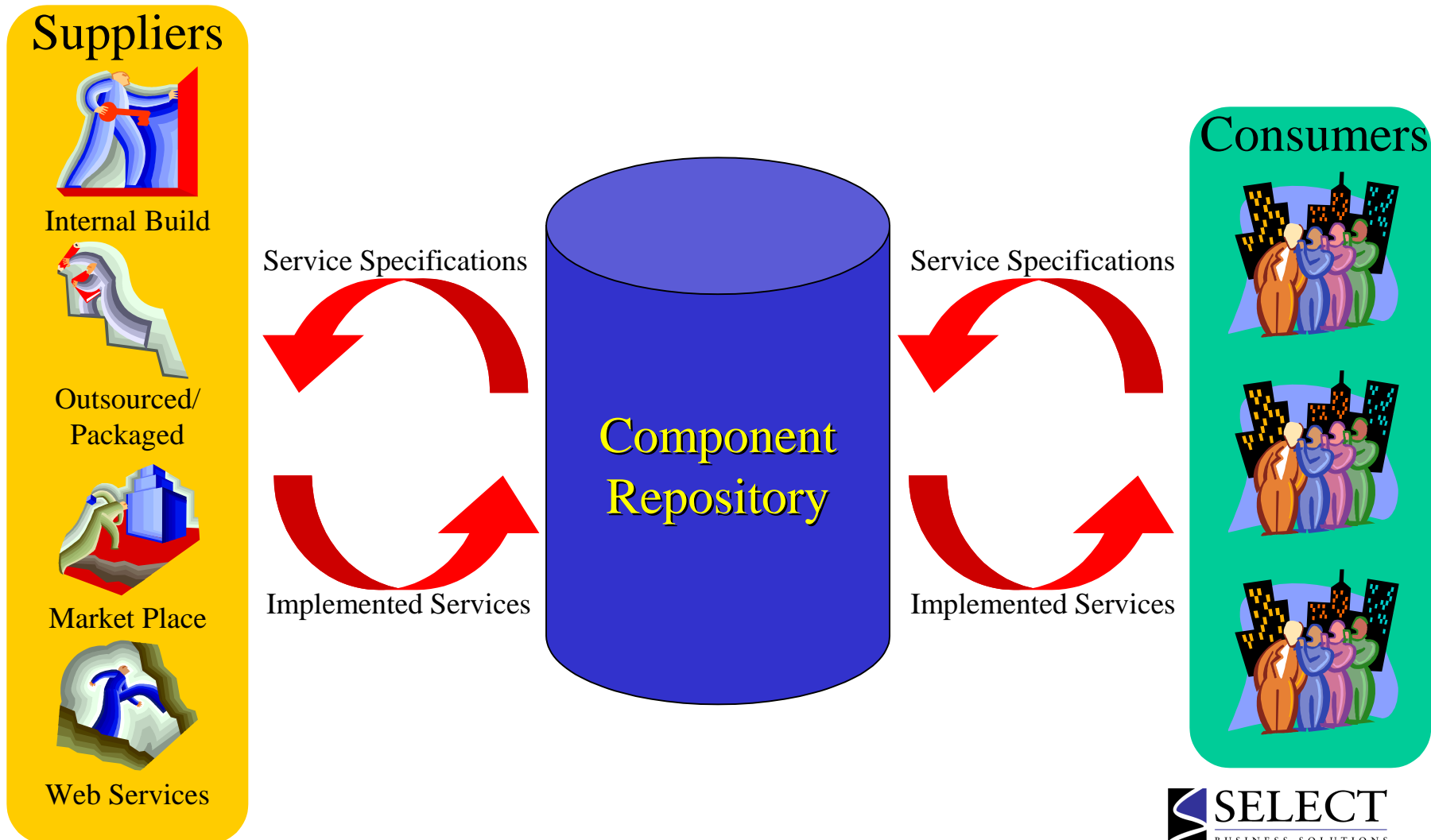
For Each Line in the Order
  Customer adds item to Order
  Retrieve Product Information
  Confirm Availability
  If Product Available
    Add to Order
  End If
End For
Customer Confirms Order
Confirm the Order
Debit Customer's Account
    
```



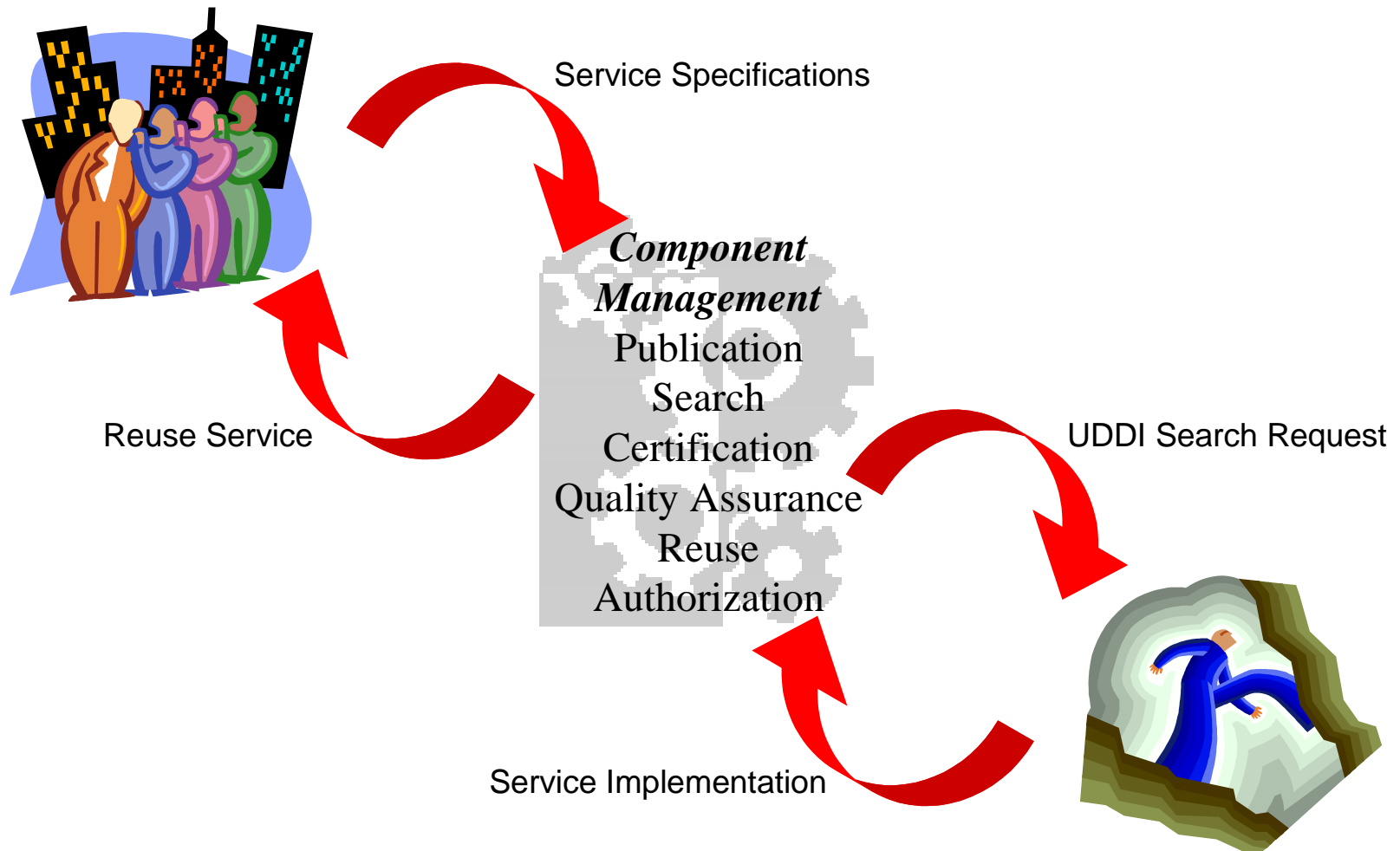
# Further Provisioning



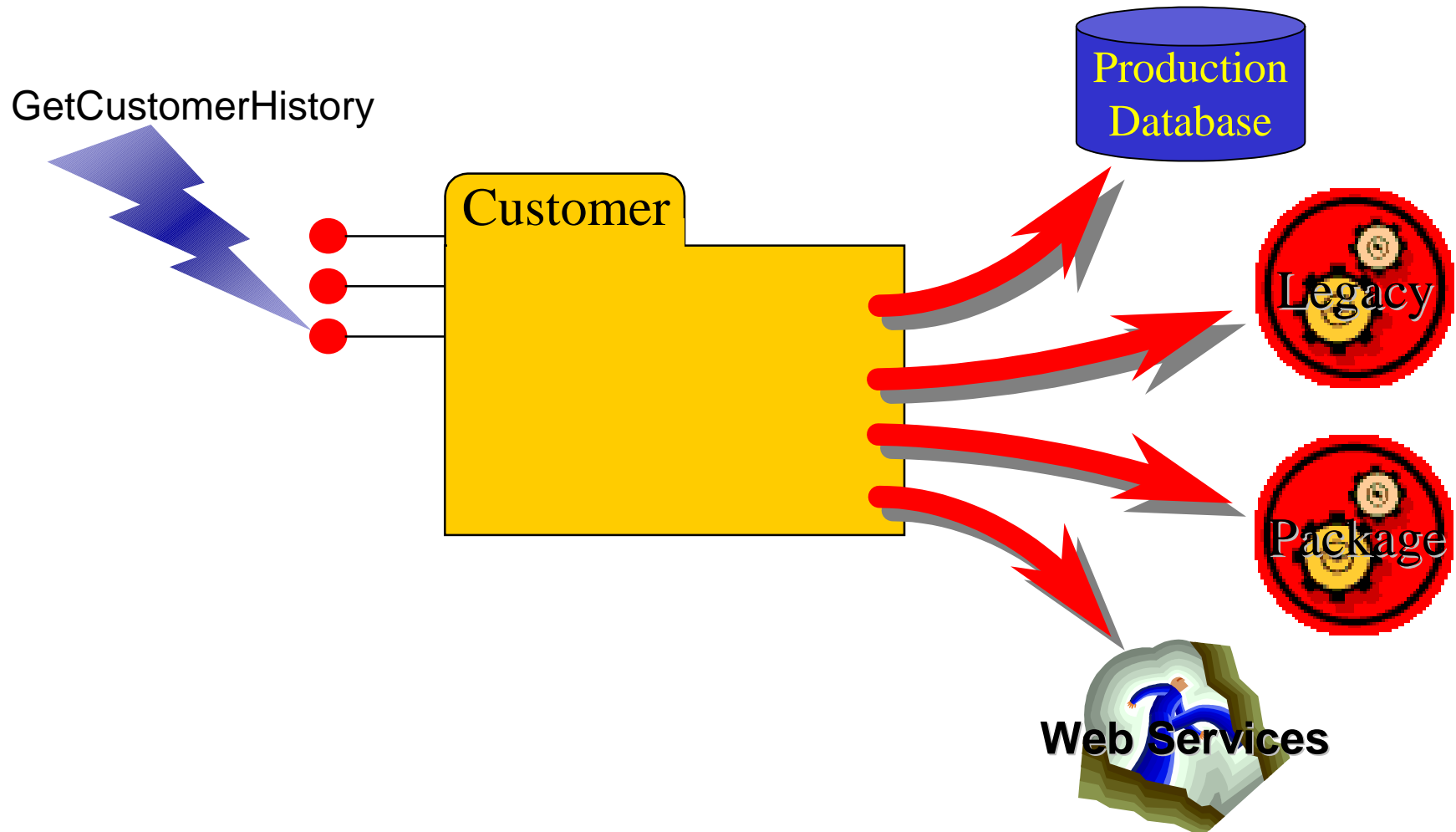
# Provisioning Architecture



# Web Services Provisioning



# Wrapping Integrates Web Services



# Summary

---

- **Web Services** – a new channel for delivering an already familiar Service-based Architecture.
- **Novel technology** – but management challenges are already known and understood:  
*Supply-Manage-Consume (SMaC).*
- **CBD processes, techniques and models** naturally fit the *Wonderful World of Web Services*.
- **SMaC Paradigm** provides complete alignment with the economics and management needs of Web Service Consumers.