

Process and Architecture Chair – John Knapman: IBM

▪ **User Architecture**

– **European Central Bank**

Chris Nelson

– **Care Data Systems**

Jon Farmer

▪ **Digital Object Repository**

Christophe Blanchi, Jason Petrone: CNRI

▪ **Development and Integration Architectures**

– **Architecture-driven development**

Heather Walden: M.E.T.A.

– **Business Process Integration**

Yuuji Mizote, Atsushi Murase: Hitachi

– **Advanced Integration**

Christoph Bussler: Oracle

▪ **Discussion**

– **Standards, including UML Profile for EAI**

UML Profile for Event-based Architectures in EAI — Joint Submission

John Knapman
MQSeries Technical Strategy
IBM

knapman@uk.ibm.com

Submitters:

Concept Five
DSTC
Hitachi
IBM
Oracle
Rational
Unisys

Supporters:

CBOP
Charles Schwab & Co
Data Access

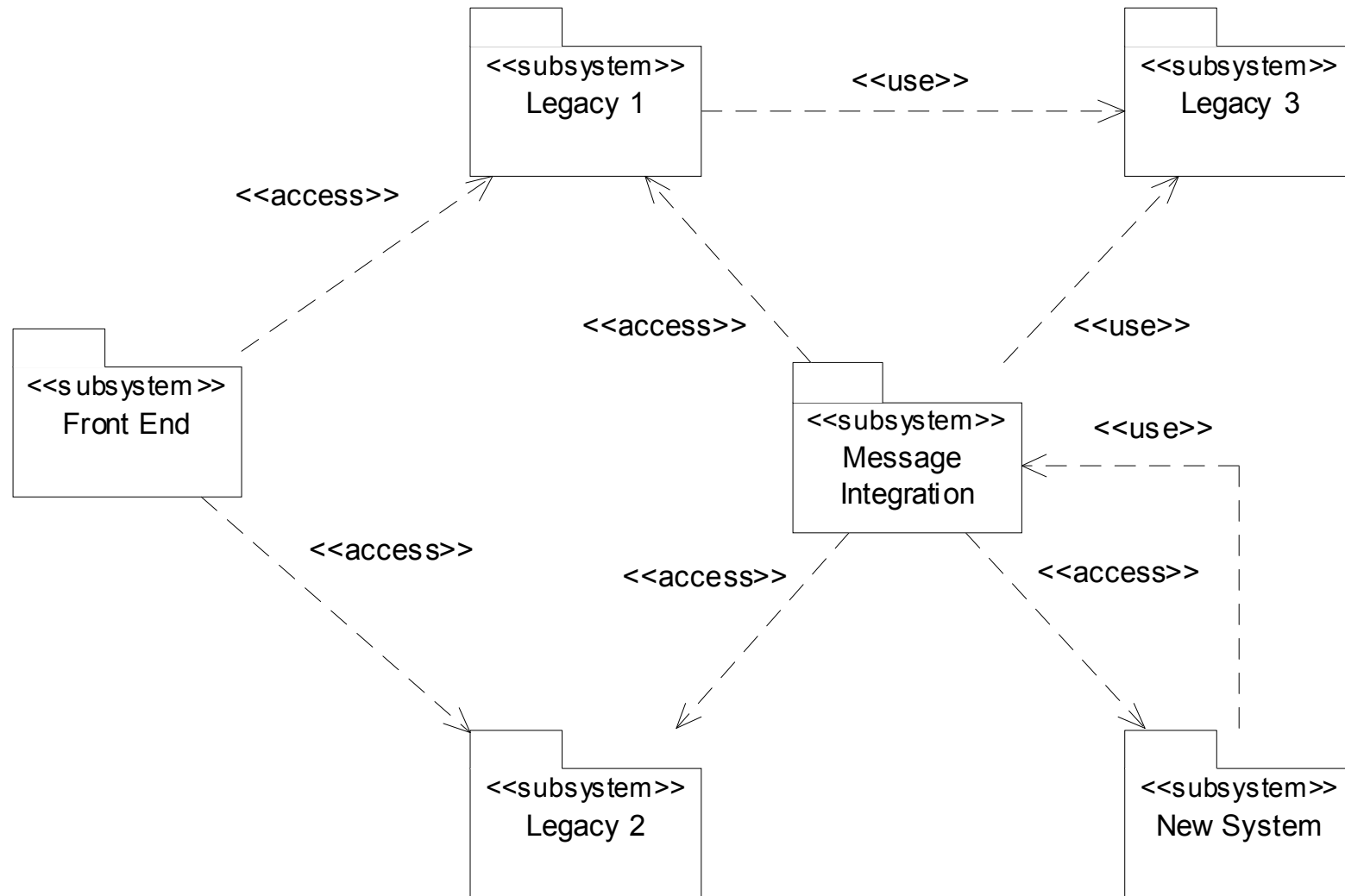
Assessors:

Boeing
John Deere & Co
Union Bank of
Switzerland

Purpose

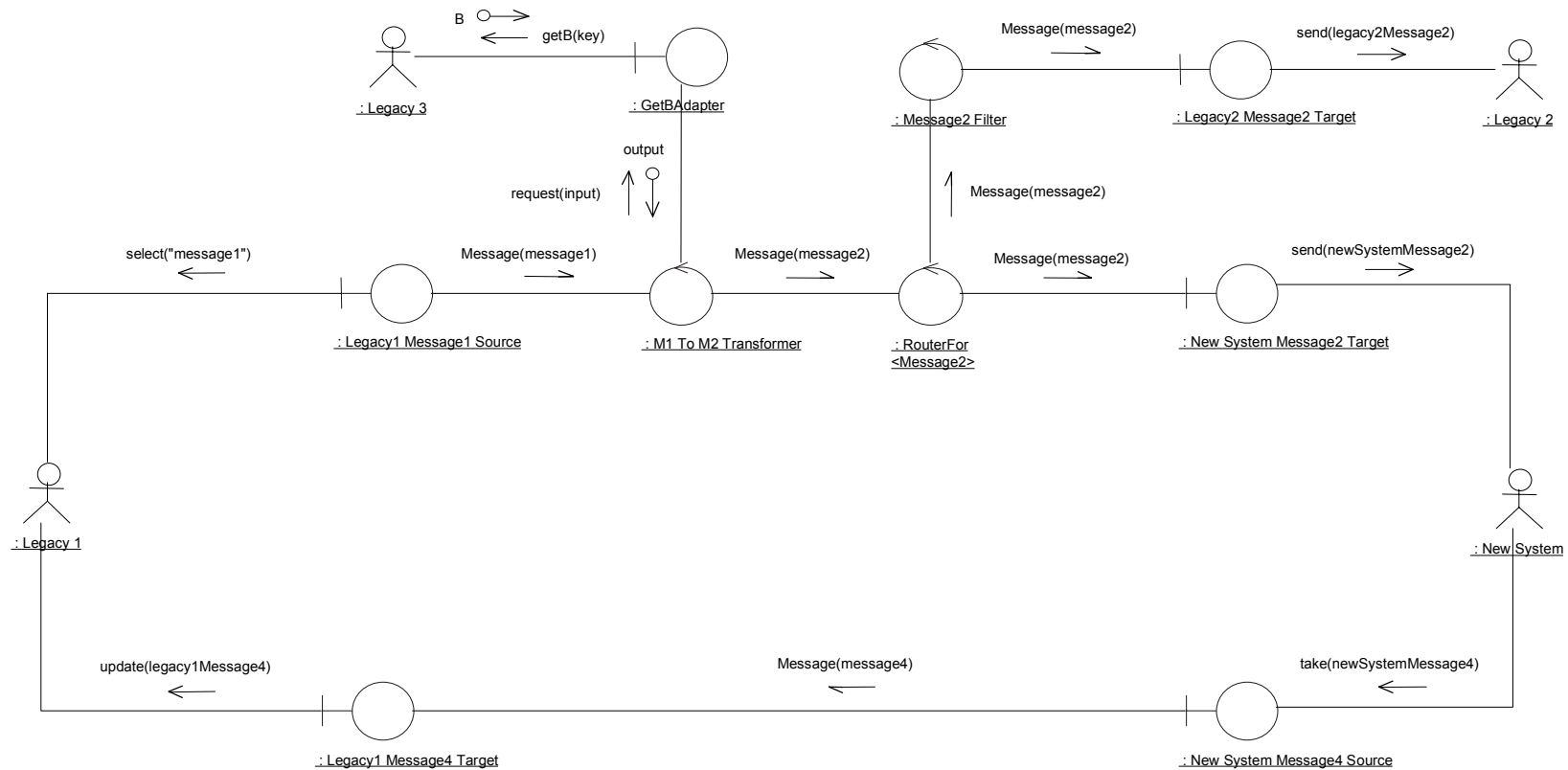
- **Provide modeling constructs for application integration**
 - Application architectures based on business events
 - Exploit existing UML tools
 - Position well for new tools
- **Consolidate approaches to modeling for EAI**
 - Middleware and tools: message brokers, distributed systems
 - Mappings to IBM MQSeries Integrator, Oracle 8, J2EE
- **Agree on best practice**
 - User confidence
 - Consistent tools support
 - Middleware compatibility

A Message-based Integration Architecture



UML for EAI

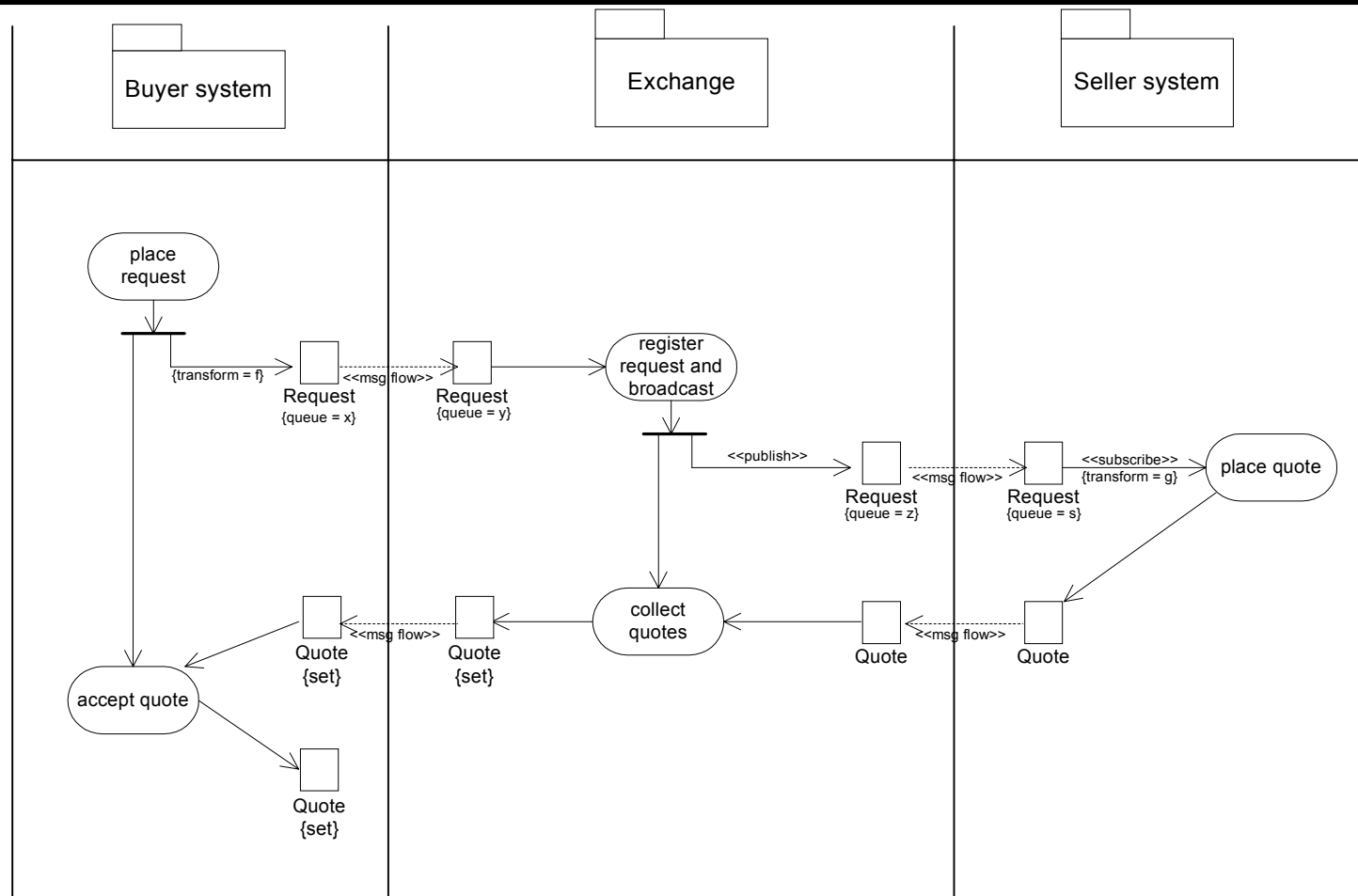
Message-based Integration Collaboration Diagram



Realizing a message-based integration use case with message flow

UML for EAI

Activity Graph



Application integration example with stereotypes

UML for EAI

Business Events

- **Modeling IT systems that perform business functions**
 - **Not building business models**
 - **Architectural level that maps readily to business models**
- **Event-based architecture**
 - **Central importance of business events**
 - **Representation as message content**
 - Message-oriented middleware (MOM), voicemail, e-mail, wireless links, Internet
 - XML, programming language structures, BODs, EDI, SWIFT, HL7
 - **Business event may give rise to many messages**
 - e.g., order receipt → fulfilment, accounting, book keeping, commission calculation

Plans and Progress

- | | |
|-----------------------|-------------|
| ▪ RFP issued | March 2000 |
| ▪ Initial submissions | August 2000 |
| ▪ Final submission | April 2001 |

[http://www.omg.org/techprocess/meetings/
schedule/UML_Profile_for_EAI_RFP.html](http://www.omg.org/techprocess/meetings/schedule/UML_Profile_for_EAI_RFP.html)