

**UML in the .com Enterprise:
Modeling CORBA, Components, XML/XMI and Metadata**

November 6 -9, 2000

Ali ATAYA
aataya@valoris.com

Architect Manager

VALORIS
19-21, rue du Colonel Pierre AVIA
75015 PARIS
Telephone: +33-1-41 90 32 57
Facsimile: +33-1-41 90 30 69

Bienvenue sur le site d'EUROFIL
Un service 24h/24

Calculez votre devis automobile en direct
Souscription en ligne avec paiement sécurisé
[Cliquez ici](#)

[Calculez votre devis](#)
Mentions légales (cnil et code des assurances)

YENNE REALISEE PAR NOS CLIENTS PAR RAPPORT A LEUR PRECEDENT ASSUREUR A [Source IFOP](#)

Devis enregistré
Pour retrouver, consulter, modifier un devis d'assurance automobile. Pour souscrire votre contrat.
[Cliquez ici](#)

Vous êtes Client d'EUROFIL
Pour accéder à nos services en ligne : informations, actualités, demande d'attestation déclarations de sinistres
[Cliquez ici](#)

E-mail Rendez-vous Numéros utiles Ce site est optimisé pour une définition de 800*600

EUROFIL

Calculer votre devis

Démarrer Results Gestionnaire des ... Bienvenue su... Microsoft PowerP... Explorateur - C:\... 19:53

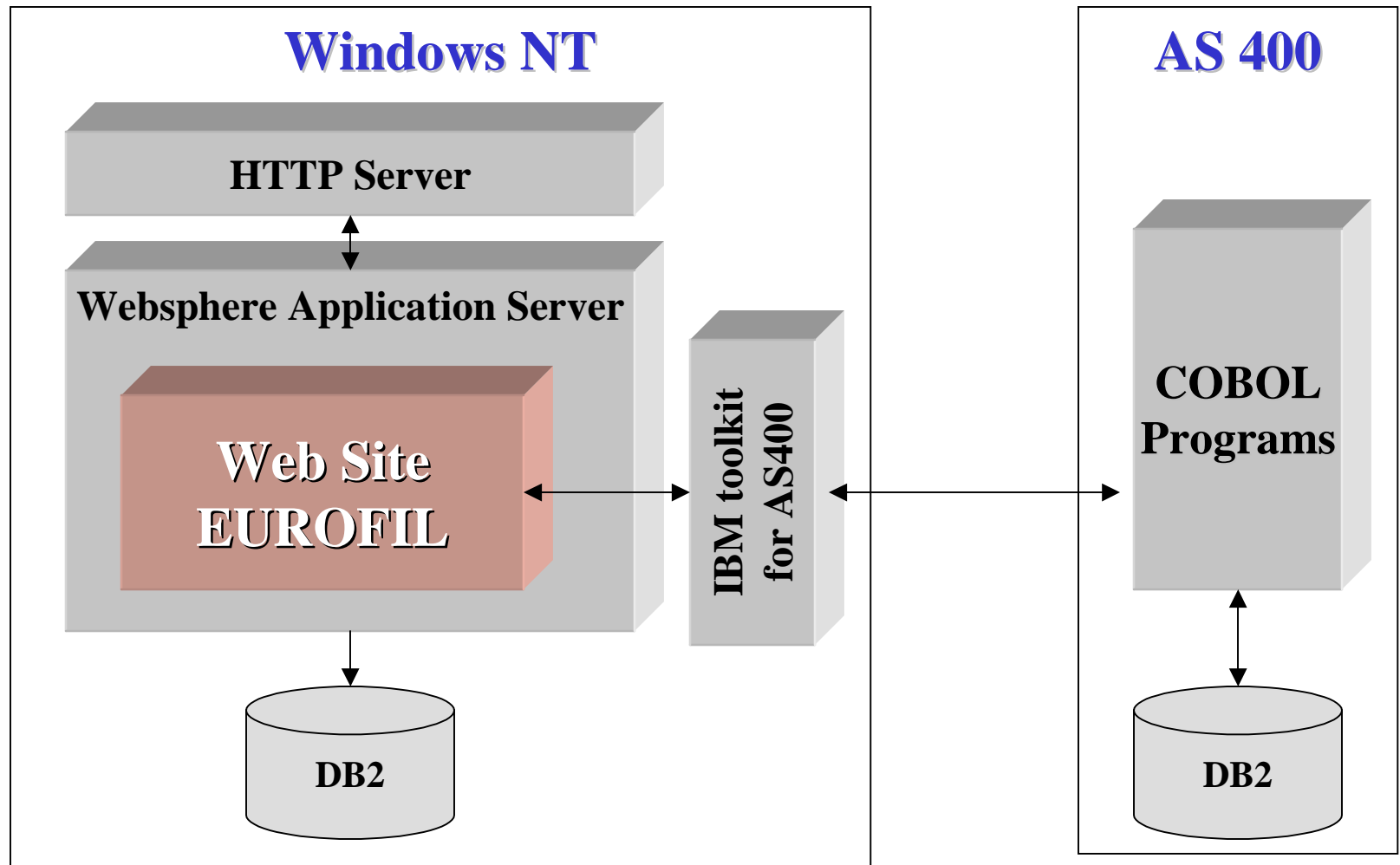
Summary

- Project Description
- Technical Architecture
- UML Modeling
- Application Design
- Conclusion

Project Description

- On-line pricing for Car Policy
- On-line subscription
- Secure payment
- Customer services for contract tracking and sinister declaration

Technical Architecture



UML Modeling

- Class Diagrams for business classes
- Sequence Diagrams for the design of call sequencing from the user request to the response
- State-Transition Diagrams for EJB Sessions behavior

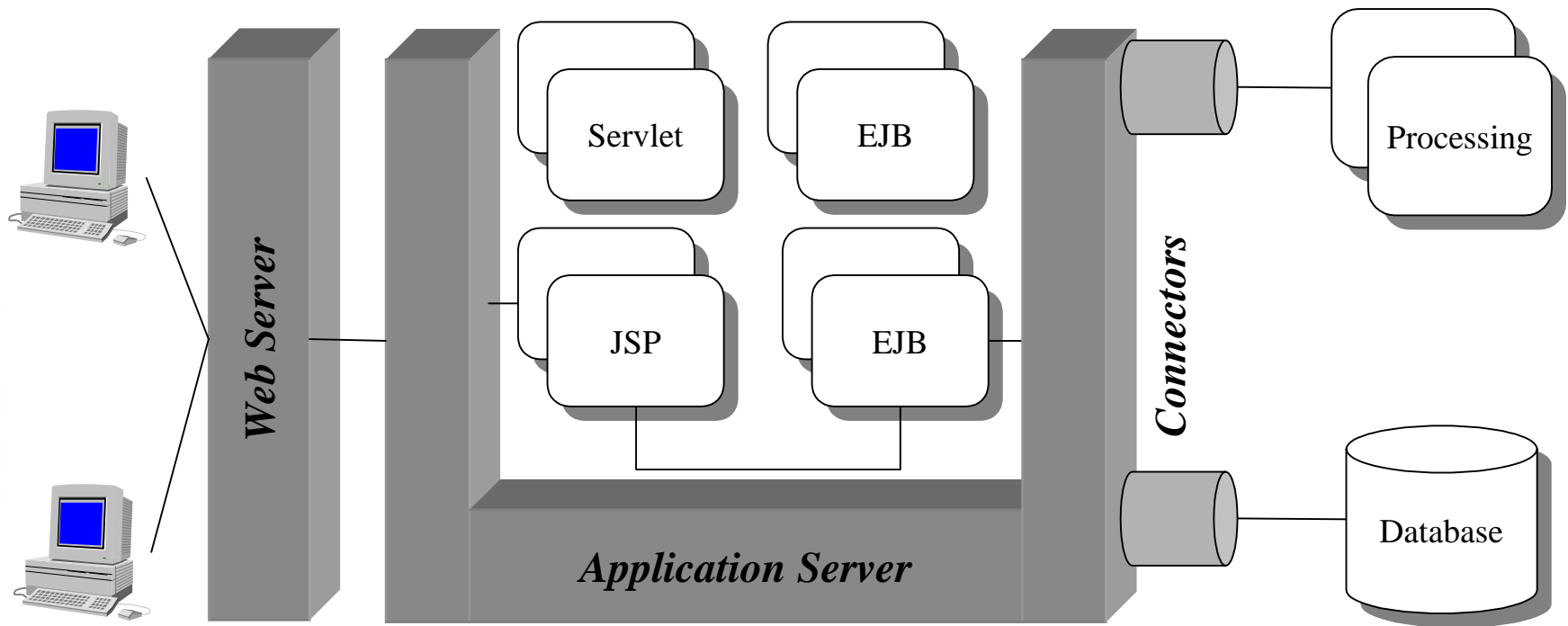
UML Modeling

- Done only for design and documentation needs
- Code generation was not able for EJB support
- No integration with Visual Age for JAVA
- Reverse engineering is needed for UML models
update

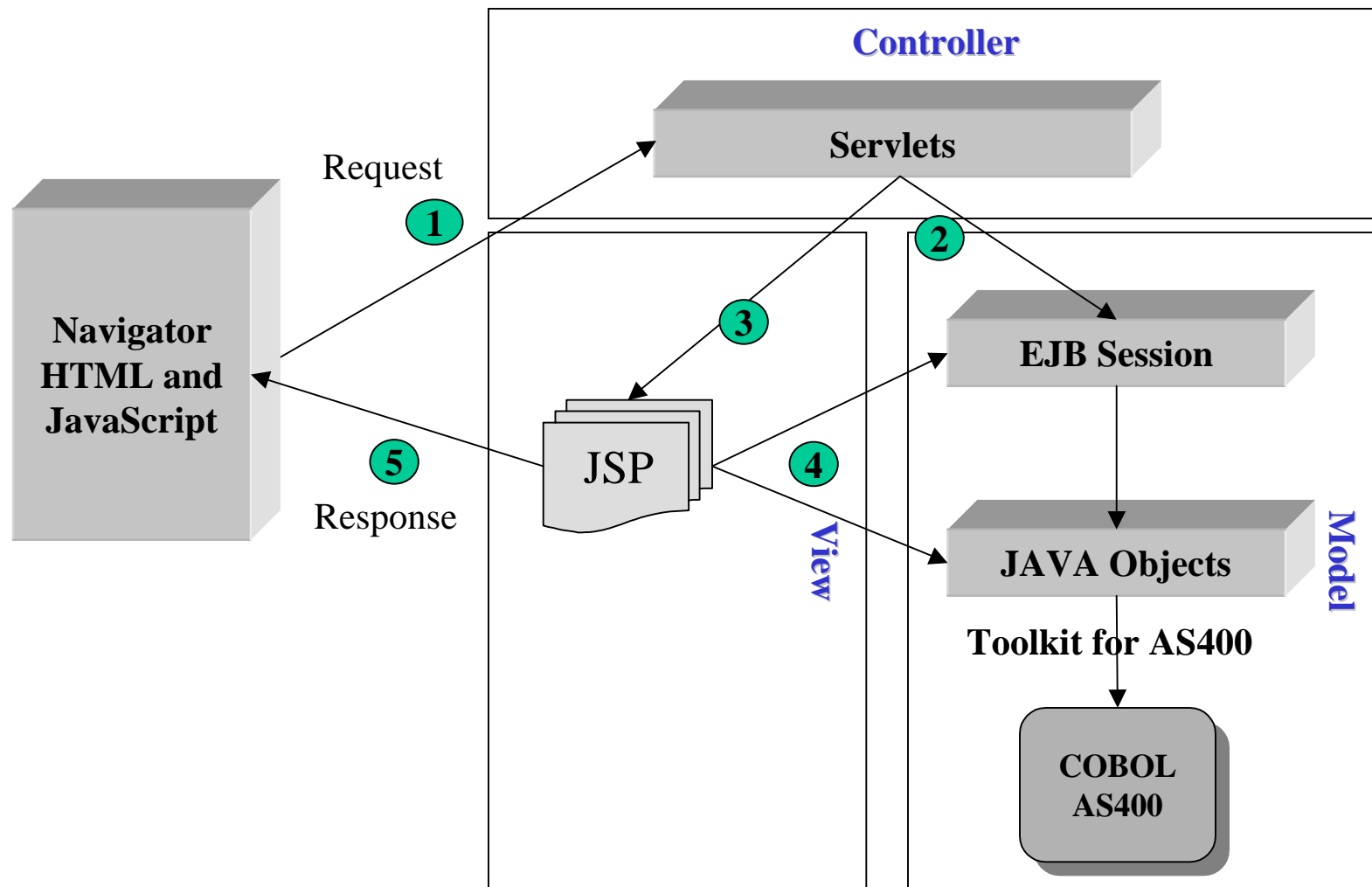
Application Design

- Three tier Architecture
- Model View Controller Design
 - *Servlet as controller*
 - *EJB as Model access*
 - *JSP as View*
- Object Oriented Design for
 - *Servlets Hierarchy*
 - *EJB Sessions Hierarchy*
 - *Cobol callers Hierarchy*

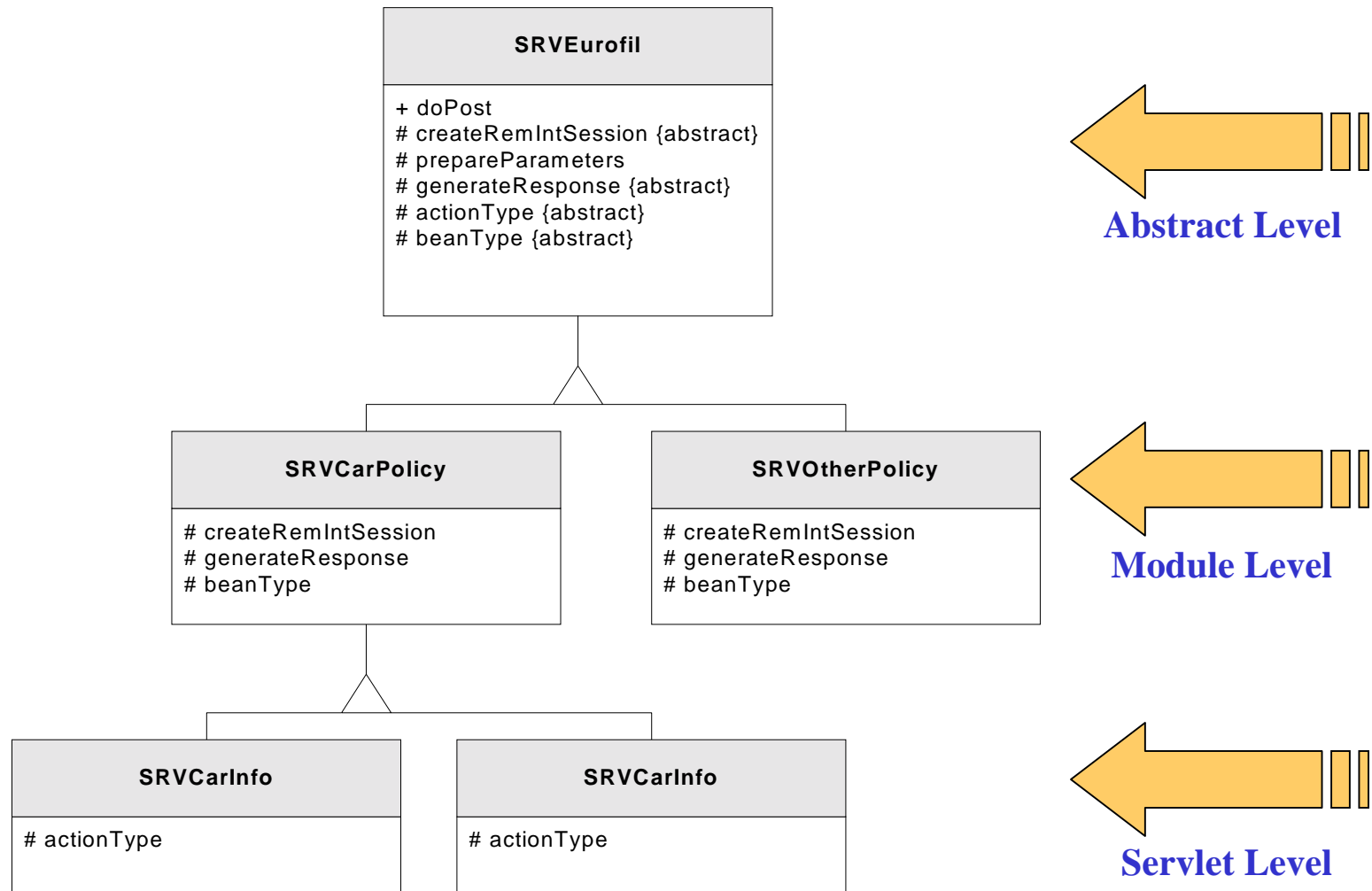
Three Tiers Architecture



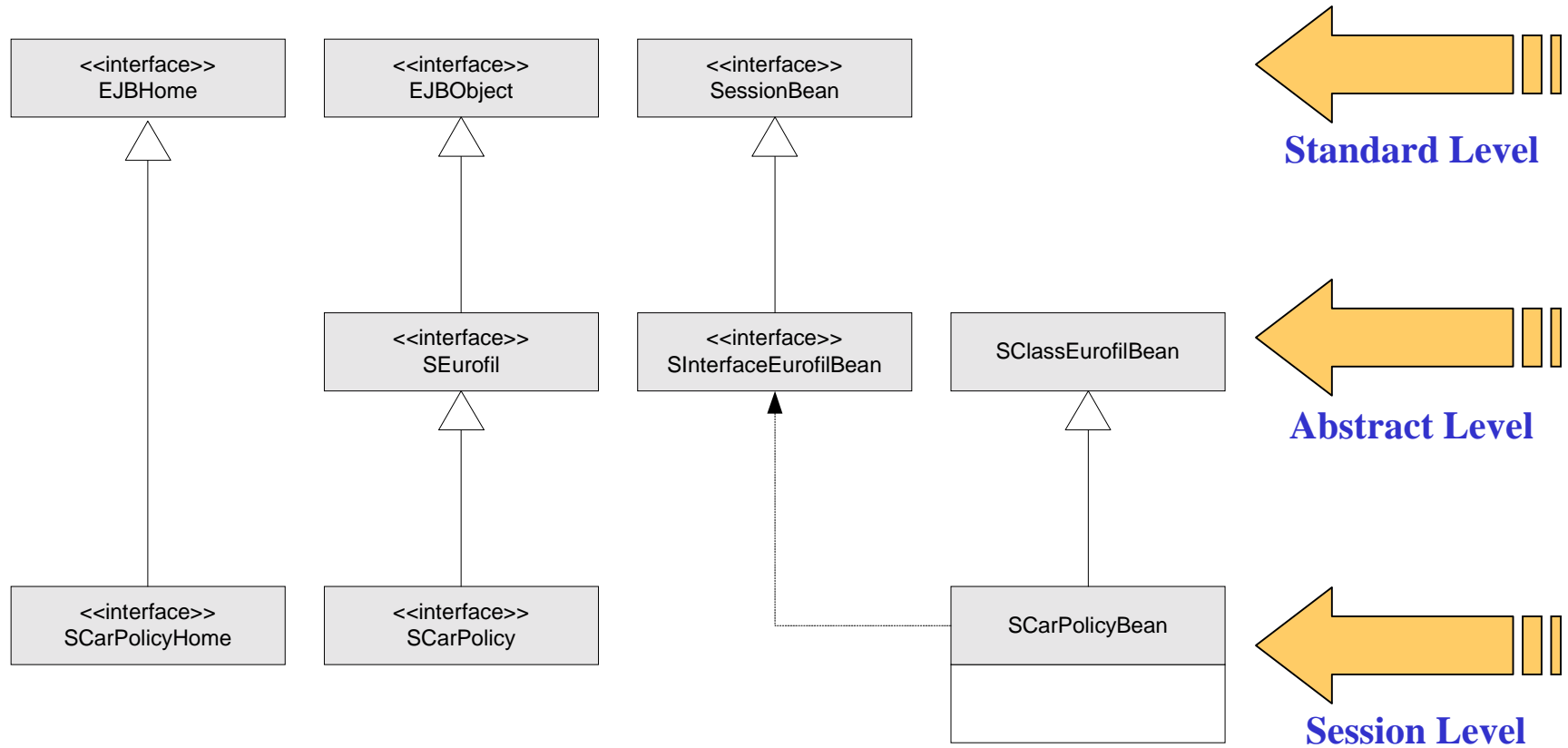
MVC Schema



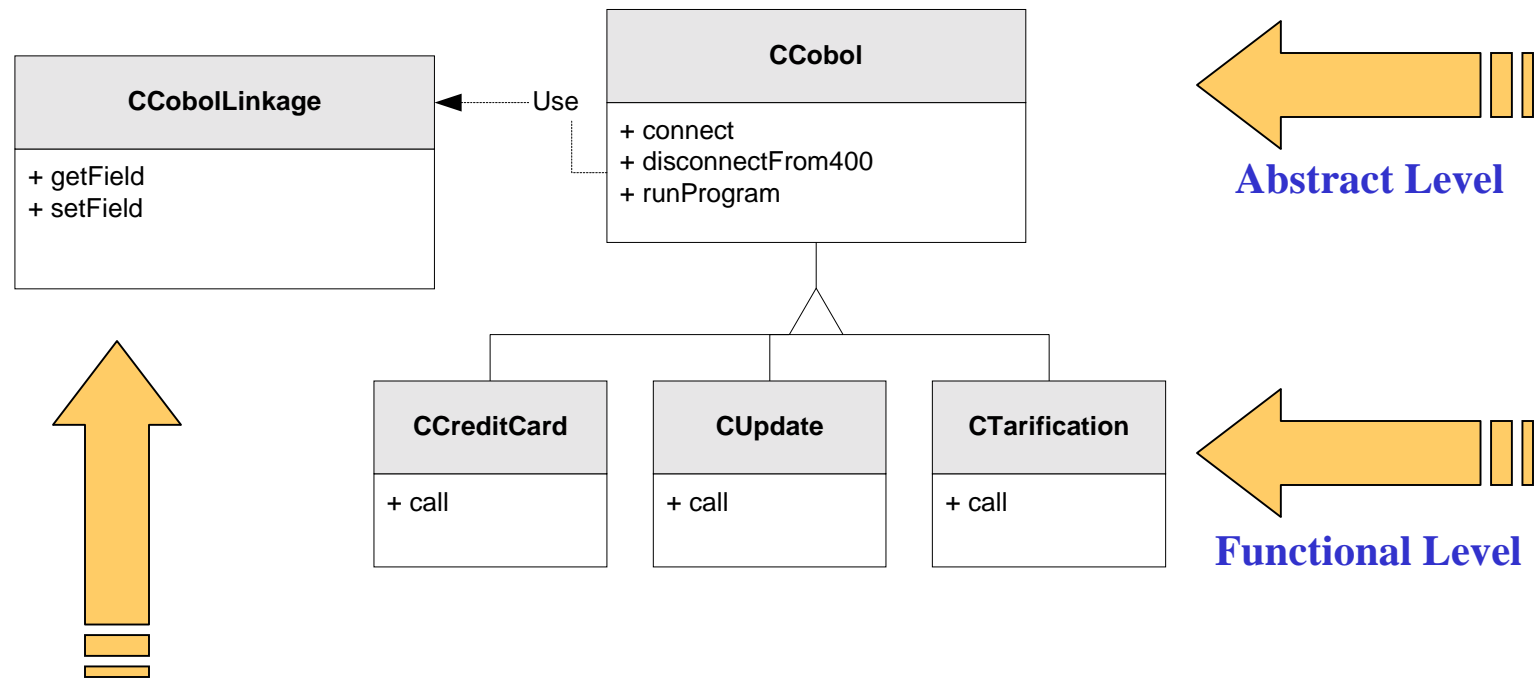
Servlets Hierarchy



EJB Sessions Hierarchy



COBOL Callers Hierarchy



Generated automatically
From COBOL Linkages for
getting and setting fields

Conclusion

- UML still not used widely with use case approach.
- Needs to have more integration between IDEs and CASE tools.
- Web applications still “servlet oriented” or “ASP oriented” without using a complete three tier architecture.
- Integration with legacy systems becomes a reality with JAVA and CORBA integration.