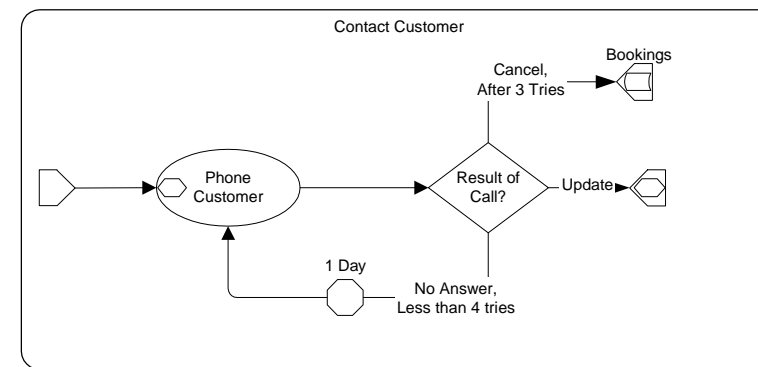
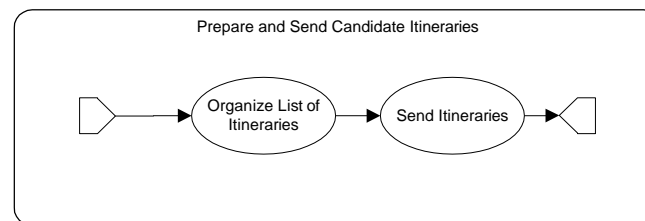
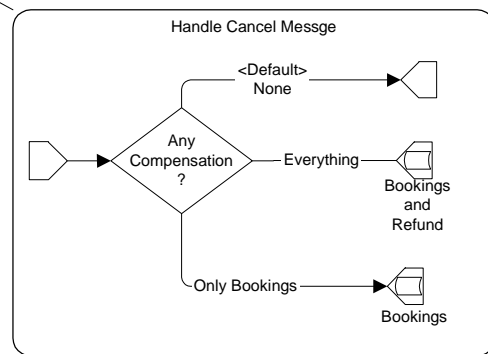
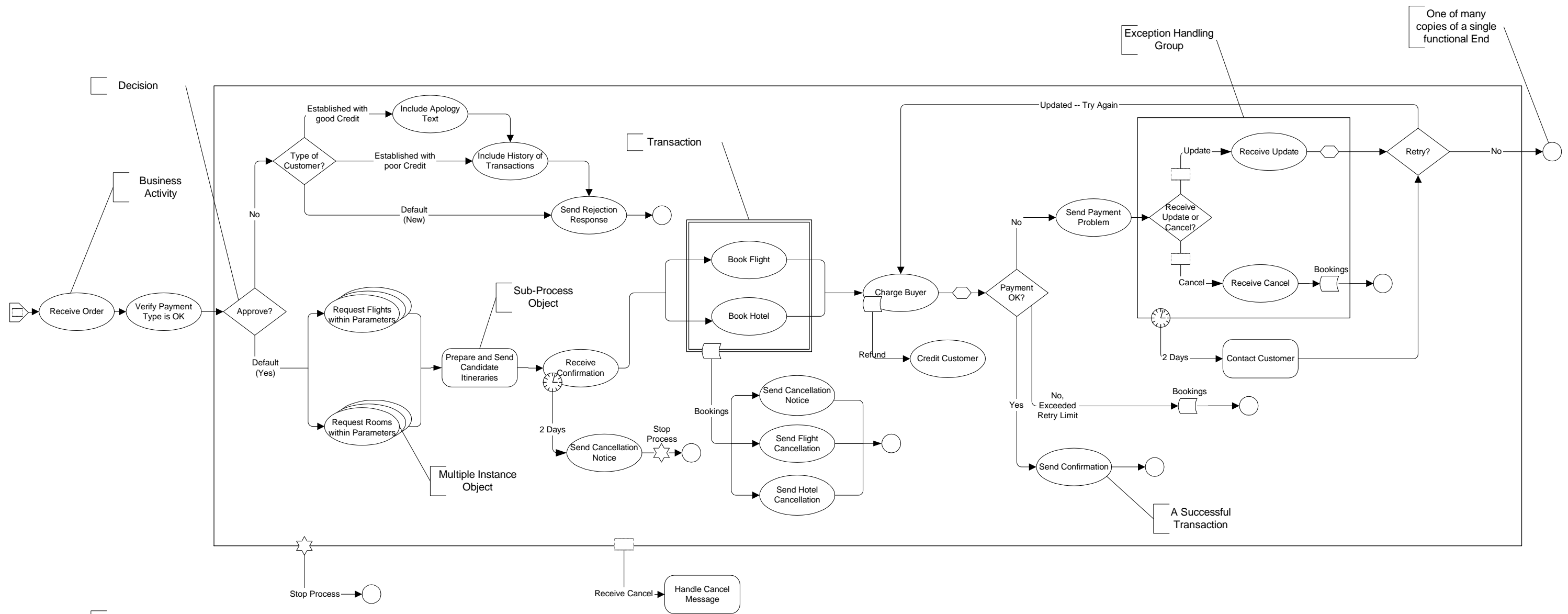
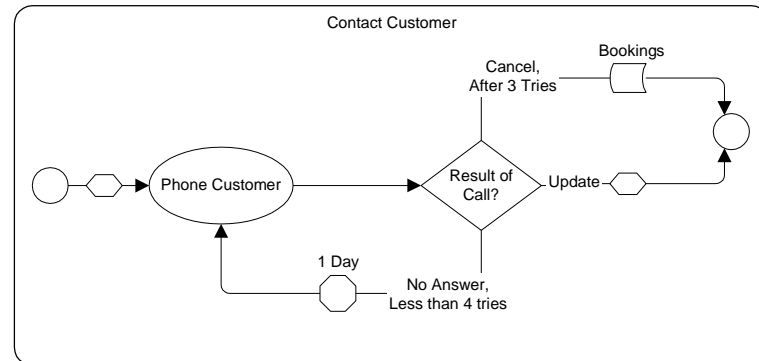
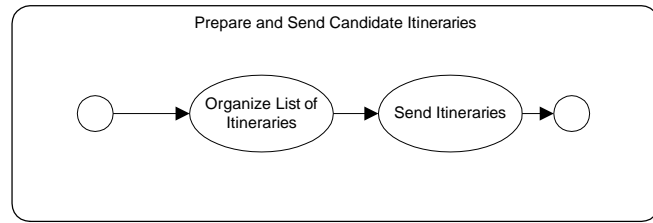
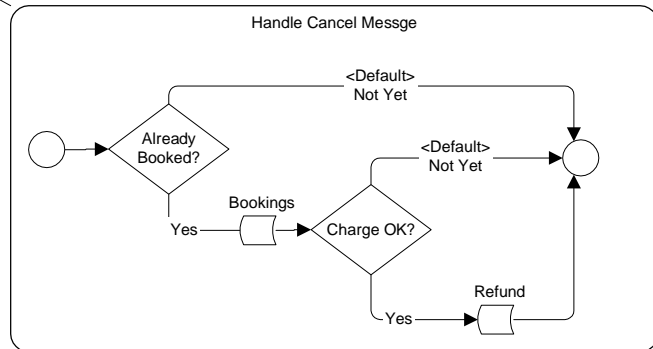


Details of a Sub-Process; probably in another diagram

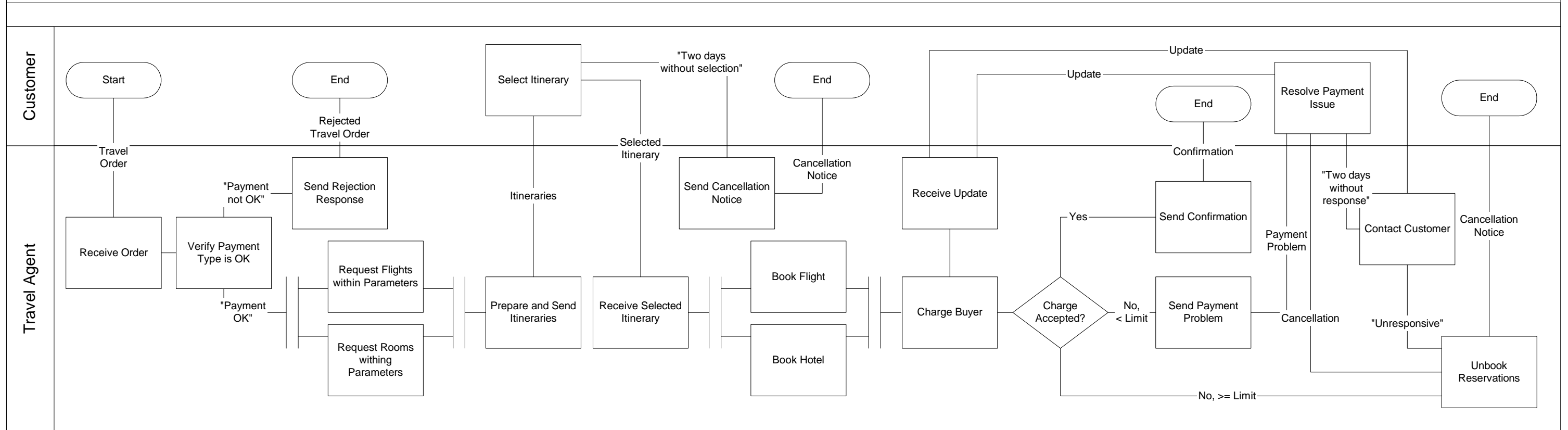


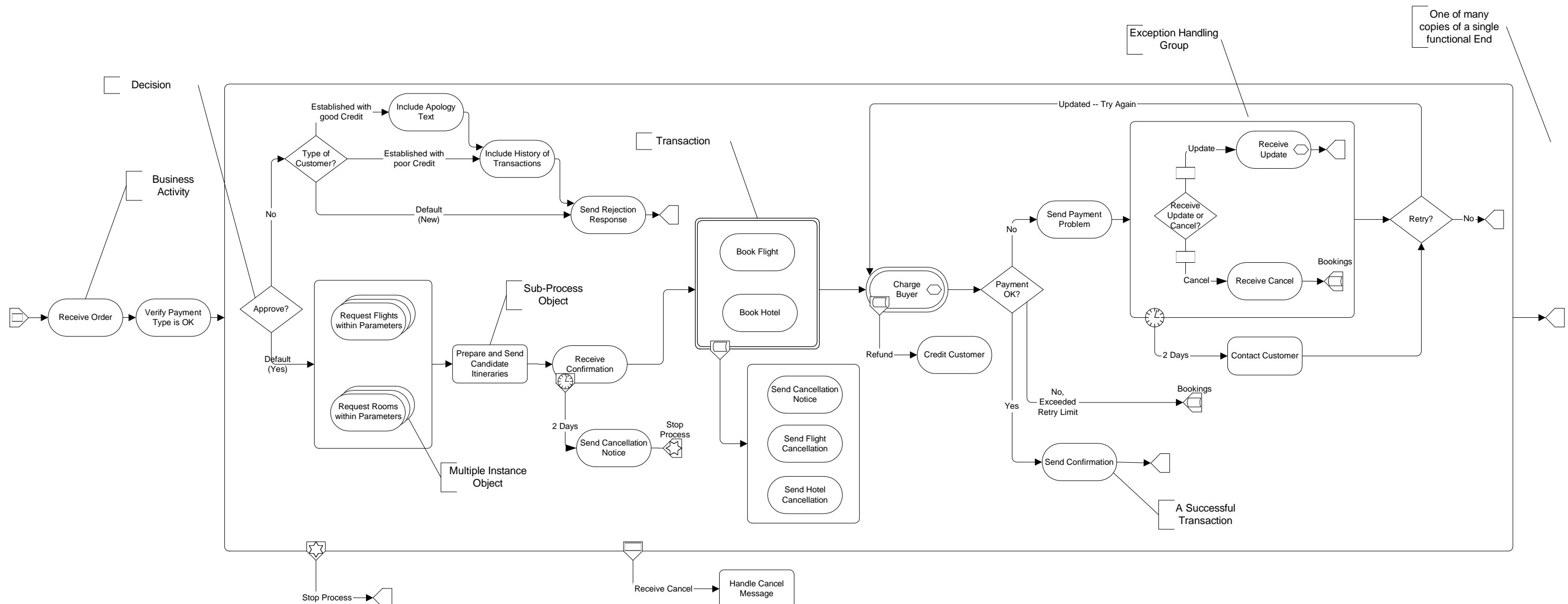


Details of a Sub-Process; probably in another diagram



Travel Arrangements





Decision

Business Activity

Transaction

Sub-Process Object

Multiple Instance Object

Exception Handling Group

One of many copies of a single functional End

A Successful Transaction

Details of a Sub-Process; probably in another diagram

