

Date: August 2025



Robotic Service Ontology (RoSO)

1.1 beta1 draft

OMG Document Number: dtc/2025-09-27

Normative reference: <https://www.omg.org/spec/RoSO/1.1/>

Copyright © 2023-2025, Japan Robot Association
Copyright © 2023-2025, Korea Association of Robot Industry
Copyright © 2023-2025, Object Management Group, Inc.
Copyright © 2023-2025, Shibaura Institute of Technology
Copyright © 2023-2025, National Institute of Advanced Industrial Science and Technology, Japan
Copyright © 2023-2024, Université Sorbonne Paris Nord

USE OF SPECIFICATION - TERMS, CONDITIONS & NOTICES

The material in this document details an Object Management Group specification in accordance with the terms, conditions and notices set forth below. This document does not represent a commitment to implement any portion of this specification in any company's products. The information contained in this document is subject to change without notice.

LICENSES

The companies listed above have granted to the Object Management Group, Inc. (OMG) a nonexclusive, royalty-free, paid up, worldwide license to copy and distribute this document and to modify this document and distribute copies of the modified version. Each of the copyright holders listed above has agreed that no person shall be deemed to have infringed the copyright in the included material of any such copyright holder by reason of having used the specification set forth herein or having conformed any computer software to the specification.

Subject to all of the terms and conditions below, the owners of the copyright in this specification hereby grant you a fully-paid up, non-exclusive, nontransferable, perpetual, worldwide license (without the right to sublicense), to use this specification to create and distribute software and special purpose specifications that are based upon this specification, and to use, copy, and distribute this specification as provided under the Copyright Act; provided that: (1) both the copyright notice identified above and this permission notice appear on any copies of this specification; (2) the use of the specifications is for informational purposes and will not be copied or posted on any network computer or broadcast in any media and will not be otherwise resold or transferred for commercial purposes; and (3) no modifications are made to this specification. This limited permission automatically terminates without notice if you breach any of these terms or conditions. Upon termination, you will destroy immediately any copies of the specifications in your possession or control.

PATENTS

The attention of adopters is directed to the possibility that compliance with or adoption of OMG specifications may require use of an invention covered by patent rights. OMG shall not be responsible for identifying patents for which a license may be required by any OMG specification, or for conducting legal inquiries into the legal validity or scope of those patents that are brought to its attention. OMG specifications are prospective and advisory only. Prospective users are responsible for protecting themselves against liability for infringement of patents.

GENERAL USE RESTRICTIONS

Any unauthorized use of this specification may violate copyright laws, trademark laws, and communications regulations and statutes. This document contains information which is protected by copyright. All Rights Reserved. No part of this work covered by copyright herein may be reproduced or used in any form or by any means--graphic, electronic, or mechanical, including photocopying, recording, taping, or information storage and retrieval systems--without permission of the copyright owner.

DISCLAIMER OF WARRANTY

WHILE THIS PUBLICATION IS BELIEVED TO BE ACCURATE, IT IS PROVIDED "AS IS" AND MAY CONTAIN ERRORS OR MISPRINTS. THE OBJECT MANAGEMENT GROUP AND THE COMPANIES LISTED ABOVE MAKE NO WARRANTY OF ANY KIND, EXPRESS OR IMPLIED, WITH REGARD TO THIS PUBLICATION, INCLUDING BUT NOT LIMITED TO ANY WARRANTY OF TITLE OR OWNERSHIP, IMPLIED WARRANTY OF MERCHANTABILITY OR WARRANTY OF FITNESS FOR A PARTICULAR PURPOSE OR USE. IN NO EVENT SHALL THE OBJECT MANAGEMENT GROUP OR ANY OF THE COMPANIES LISTED ABOVE BE LIABLE FOR ERRORS CONTAINED HEREIN OR FOR DIRECT, INDIRECT, INCIDENTAL, SPECIAL, CONSEQUENTIAL, RELIANCE OR COVER DAMAGES, INCLUDING LOSS OF PROFITS, REVENUE, DATA OR USE, INCURRED BY ANY USER OR ANY THIRD PARTY IN CONNECTION WITH THE FURNISHING, PERFORMANCE, OR USE OF THIS MATERIAL, EVEN IF ADVISED OF THE POSSIBILITY OF SUCH DAMAGES.

The entire risk as to the quality and performance of software developed using this specification is borne by you. This disclaimer of warranty constitutes an essential part of the license granted to you to use this specification.

RESTRICTED RIGHTS LEGEND

Use, duplication or disclosure by the U.S. Government is subject to the restrictions set forth in subparagraph (c) (1) (ii) of The Rights in Technical Data and Computer Software Clause at DFARS 252.227-7013 or in subparagraph (c)(1) and (2) of the Commercial Computer Software - Restricted Rights clauses at 48 C.F.R. 52.227-19 or as specified in 48 C.F.R. 227-7202-2 of the DoD F.A.R. Supplement and its successors, or as specified in 48 C.F.R. 12.212 of the Federal Acquisition Regulations and its successors, as applicable. The specification copyright owners are as indicated above and may be contacted through the Object Management Group, 109 Highland Avenue, Needham, MA 02494, U.S.A.

TRADEMARKS

CORBA®, CORBA logos®, FIBO®, Financial Industry Business Ontology®, FINANCIAL INSTRUMENT GLOBAL IDENTIFIER®, IIOP®, IMM®, Model Driven Architecture®, MDA®, Object Management Group®, OMG®, OMG Logo®, SoaML®, SOAML®, SysML®, UAF®, Unified Modeling Language®, UML®, UML Cube Logo®, VSIPL®, and XMI® are registered trademarks of the Object Management Group, Inc.

For a complete list of trademarks, see: https://www.omg.org/legal/tm_list.htm. All other products or company names mentioned are used for identification purposes only, and may be trademarks of their respective owners.

COMPLIANCE

The copyright holders listed above acknowledge that the Object Management Group (acting itself or through its designees) is and shall at all times be the sole entity that may authorize developers, suppliers and sellers of computer software to use certification marks, trademarks or other special designations to indicate compliance with these materials.

Software developed under the terms of this license may claim compliance or conformance with this specification if and only if the software compliance is of a nature fully matching the applicable compliance points as stated in the specification. Software developed only partially matching the applicable compliance points may claim only that the software was based on this specification, but may not claim compliance or conformance with this specification. In the event that testing suites are implemented or approved by Object Management Group, Inc., software developed using this specification may claim compliance or conformance with the specification only if the software satisfactorily completes the testing suites.

OMG's Issue Reporting Procedure

All OMG specifications are subject to continuous review and improvement. As part of this process we encourage readers to report any ambiguities, inconsistencies, or inaccuracies they may find by completing the Issue Reporting Form listed on the main web page <http://www.omg.org>, under Documents, Report a Bug/Issue.

Table of Contents

1	<i>Scope</i>	<i>5</i>
2	<i>Conformance.....</i>	<i>6</i>
3	<i>Normative References</i>	<i>7</i>
4	<i>Terms and Definitions</i>	<i>7</i>
5	<i>Symbols.....</i>	<i>8</i>
6	<i>Additional Information.....</i>	<i>9</i>
6.1	<i>Acknowledgements.....</i>	<i>9</i>
6.2	<i>Intellectual Property Right.....</i>	<i>9</i>
6.3	<i>Reuse of the Ontologies</i>	<i>9</i>
6.4	<i>Notations</i>	<i>9</i>
7	<i>Robotic Service Ontology.....</i>	<i>11</i>
7.1	<i>Robotic Service Ontology</i>	<i>11</i>
7.2	<i>Robotic Service Interaction Ontology</i>	<i>14</i>
7.3	<i>Robotic Service Function Ontology</i>	<i>17</i>
Annex A	<i>.....</i>	<i>20</i>
Annex B	<i>.....</i>	<i>26</i>
Annex C	<i>.....</i>	<i>28</i>

Preface

OMG

Founded in 1989, the Object Management Group, Inc. (OMG) is an open membership, not-for-profit computer industry standards consortium that produces and maintains computer industry specifications for interoperable, portable, and reusable enterprise applications in distributed, heterogeneous environments. Membership includes Information Technology vendors, end users, government agencies, and academia.

OMG member companies write, adopt, and maintain its specifications following a mature, open process. OMG's specifications implement the Model Driven Architecture® (MDA®), maximizing ROI through a full-lifecycle approach to enterprise integration that covers multiple operating systems, programming languages, middleware and networking infrastructures, and software development environments. OMG's specifications include: UML® (Unified Modeling Language™); CORBA® (Common Object Request Broker Architecture); CWM™ (Common Warehouse Metamodel™); and industry-specific standards for dozens of vertical markets.

More information on the OMG is available at <http://www.omg.org/>.

OMG Specifications

As noted, OMG specifications address middleware, modeling and vertical domain frameworks. All OMG Specifications are available from the OMG website at:

<https://www.omg.org/spec>

All of OMG's formal specifications may be downloaded without charge from our website. (Products implementing OMG specifications are available from individual suppliers.) Copies of specifications, available in PostScript and PDF format, may be obtained from the Specifications Catalog cited above or by contacting the Object Management Group, Inc. at:

OMG Headquarters
9C Medway Road, PMB 274
Milford, MA 01757
USA
Tel: +1-781-444-0404
Fax: +1-781-444-0320
Email: pubs@omg.org

Certain OMG specifications are also available as ISO standards. Please consult <https://www.iso.org>

1 Scope

The Robotic Service Ontology (RoSO) defines vocabularies to describe functions and constraints of robotic functional components for deployment in robotic services. RoSO is intended to work with IEEE1872-2015 [IEEE1872] for robotic functions. RoSO also intended to work with other ontologies for Human-Robot or Human-Agent Interaction (HRI/HAI) and ontologies for the service domain.

Robotic systems have been used to provide interactive service in societies such as reception, navigation, and retails. The development of such robotic systems becomes modularized with component technologies. ROS and OMG RTC have provided component models for robotic technologies and have been used for more than a decade. Those component models are supported by distributed communication infrastructures such as CORBA, SDO, and DDS.

Functions to be provided by those components are issues on another side. OMG RoIS defines a framework focusing on robotic interaction services. RoIS bridges between component functions and the development of components and also service development and component development. The example use case described in RoIS contains an interaction between a messenger robot and a person that consists of a sequence of use of robotic functional components.

Though such robotic functional components have been developed upon component technologies and reuse of such components has been established with common programming interfaces, the functions of and the requirements for such components are not well described with formal definitions. About components, common API can only describe ‘how to use them,’ but ‘what they are.’ This is because of a lack of common ontology to describe features of robotic systems.

IEEE1872 [IEEE1872] is an ontology for the robotics domain focusing on the core (generic) concepts for use in robotic systems and automation. The standard, called Core Ontology for Robotics and Automation (CORA), however, does not include domain-specific vocabularies, such as vocabularies for human-robot interactions, or those for robotic interaction services, or those for environmental knowledge required to deliver such services. The IEEE Robotics and Automation Society (RAS) has several activities to define domain-specific ontologies for autonomous systems and industrial robots but has not addressed requirements specific to service robots. With common vocabularies to describe the kinds of services provided by service robots, their components, and interfaces, interoperability and composition of lower-level services to achieve greater functionality are possible. The description of protocols and syntax of function calls are in machine-readable formats; the lack of formal definitions and semantics may allow for the specification of some robotic services, such as OMG RoIS (Robotic Interaction Service) framework [RoIS], which describe prerequisites and effects of components’ functions in natural languages that developers and users of components can understand, but that the systems themselves cannot.

Figure 1 depicts a map of current specifications relating to robotic services.

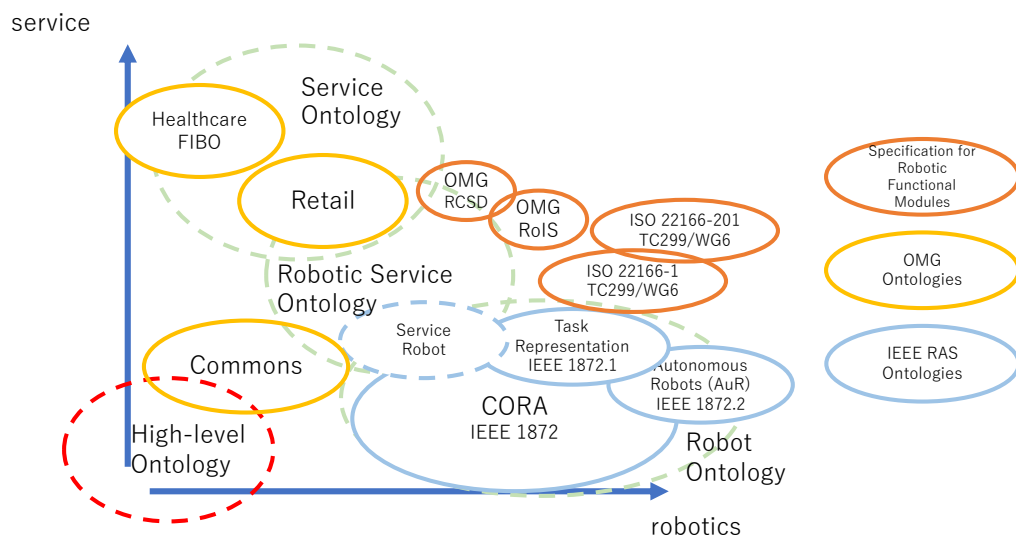


Figure 1 A map of current specifications that are related to robotic services.

This specification describes a new ontology for robotic services providing a foundation which existing robot services, such as those defined in OMG RoIS, can be clearly and consistently understood. Though RoIS provides a means to

There are two conformance points with respect to the ontologies provided herein. These are as follows:

- (1) Specification-level conformance with all of the OWL ontologies – which means that the subject application formally imports all of the ontologies (*i.e.*, through `owl:imports` statements in another ontology or via loading the full set of ontologies for reference in a knowledge base that supports OWL) with no resulting logical inconsistencies;
- (2) Linked Data-level conformance – which means that the subject application references one or more of the ontologies but does not formally import them.

For either conformance point, any references to the elements defined in a given ontology must use, or provide a mapping to, the standard OMG URI for that element. Implementations that claim specification-level conformance with the ontologies must support all of them.

Users may choose to use or extend any of the RoSO ontologies needed to address their individual requirements.

3 Normative References

The following normative documents contain provisions which, through reference in this text, constitute provisions of this specification. For dated references, subsequent amendments to, or revisions of, any of these publications do not apply.

[Commons] OMG Commons Ontology. Available at <https://www.omg.org/spec/Commons/>.

[CORA] IEEE Standard Ontologies for Robotics and Automation, IEEE1972-2015. Available at <https://standards.ieee.org/ieee/1872/5354/>.

[IPR] OMG, OMG Policy Statement Intellectual Property Rights. Available at <https://www.omg.org/cgi-bin/doc.cgi?ipr>.

[ISO 22166-1] ISO 22166-1:2021 Robotics – Modularity for service robots – Part 1: General requirements. Available at <https://www.iso.org/standard/72715.html>.

[ISO 22166-201] ISO 22166-201:2024 Robotics – Modularity for service robots – Part 201: Common information model for modules. Available at <https://www.iso.org/standard/82334.html>.

[LCC] OMG, Languages, Countries and Codes. Available at <https://www.omg.org/spec/LCC>.

[ODM] Ontology Definition Metamodel. Available at <https://www.omg.org/spec/ODM/>.

[OWL2] OWL 2 Web Ontology Language Quick Reference Guide (Second Edition), W3C Recommendation 11 December 2012. Available at <https://www.w3.org/TR/2012/REC-owl2-quick-reference-20121211/>.

[RDF Concepts] RDF 1.1 Concepts and Abstract Syntax. W3C Recommendation, 25 February 2014. Available at <https://www.w3.org/TR/rdf11-concepts/>.

[RDF Schema] RDF Schema 1.1 W3C Recommendation, 25 February 2014. Available at <https://www.w3.org/TR/rdf-schema/>.

[RLS] OMG Robotic Localization Service. Available at <https://www.omg.org/spec/RLS/>.

[RoIS] OMG Robotic Interaction Service Framework. Available at <https://www.omg.org/spec/RoIS/>.

[RTC] OMG Robotic Technology Component. Available at <https://www.omg.org/spec/RTC/>.

[SysML] OMG System Modeling Language. Available at <https://www.omg.org/spec/SysML/>.

[UML] OMG Unified Modeling Language. Available at <https://www.omg.org/spec/UML/>.

[XSD] XML Schema Part 2: Datatypes Second Edition. W3C Recommendation, 28 October 2004. Available at <https://www.w3.org/TR/xmlschema-2/>.

4 Terms and Definitions

For the purposes of this specification, the following terms and definitions apply.

Agent

An entity that provides or receives services such as a robot or a person.

Robot

An artificial agent that is used to provide robotic services.

Avatar Robot

A robot that represents a person who is operating the avatar robot remotely.

Robotic Service

A service provided by service robots.

Robotic Interaction Service

A robotic service that includes interaction between robot and human.

Robotic Functional Component

A component that is used to compose robots.

5 Symbols

CORA – Core Ontology for Robotics and Automation.

ISRO – Intelligent Service Robot Ontology.

LCC – Languages, Countries and Codes.

ODM – Ontology Definition Metamodel.

OWL – Web Ontology Language.

RDF – Resource Definition Framework.

RLS – Robotic Localization Service.

RoIS – Robotic Interaction Service.

ROS – Robot Operating System.

RTC – Robotic Technology Component.

UML – Unified Modeling Language.

W3C – World Wide Web Consortium.

XMI – XML Metadata Interchange.

XML – eXtensible Markup Language.

6 Additional Information

6.1 Acknowledgements

The following organizations submitted this specification:

- Japan Robot Association (JARA)
- Korea Association of Robot Industry (KAR)

The following additional organizations contributed to this specification:

- Shibaura Institute of Technology
- National Institute of Advanced Industrial Science and Technology, Japan (AIST)
- Université Sorbonne Paris Nord (UPSN)

The following additional companies and organizations are supporters of this specification:

- Advanced Telecommunication Research International (ATR)
- Electronics and Telecommunication Research Institute (ETRI)
- University of Seoul
- Université Paris-Est Créteil (UPEC)
- Nippon Telegraph and Telephone (NTT)

6.2 Intellectual Property Right

The submission team, including all submitters and contributors listed above (i) grants to the Object Management Group, Inc. (OMG) a perpetual, nonexclusive, royalty-free, paid up, worldwide license to copy and distribute this document and to modify this document and distribute copies of the modified version, and to allow other persons to do so; and (ii) agrees that no person shall be deemed to have infringed our copyright interest in the Submission by using OMG specifications or conforming any software to OMG specifications.

As specified in the RFP, the IPR mode for this submission is the Non-Assertion Covenant per Appendix A of the OMG IPR Policy [IPR].

6.3 Reuse of the Ontologies

The Robotic Service Ontology (RoSO) uses and extends a number of the ontologies specified in the companion Commons Ontology Library specification. The Commons Ontology Library contains small but fundamental building block ontologies that are essential to RoSO. RoSO also uses ontologies included in the Languages, Countries, and Codes (LCC) specification for the identification of languages and geographic regions associated with vocabulary elements.

6.4 Notations

The notation used to represent description logic expressions (*i.e.*, the expressions in the Parent columns in class tables containing ontology details) is consistent with the notation defined in the Description Logic Handbook [DL Handbook]. The notation used in this specification, representing a subset of OWL 2, is described in Table 6.1, below.

Table 6.1: Description Logic Expressions Notation

<i>Construct</i>	<i>Description</i>	<i>Notation</i>
<i>Boolean Connectives and Enumeration</i>		
intersection	The intersection of two classes consists of exactly those individuals which are instances of both classes.	$C \cap D$

union	The union of two classes contains every individual which is contained in at least one of these classes.	$C \cup D$
enumeration	An enumeration defines a class by enumerating all its instances.	$\text{oneOf}(i_1, i_2, i_3, \dots i_n)$
Property Restrictions		
universal quantification	Universal quantification is used to specify a class of individuals for which all related individuals must be instances of a given class (<i>i.e.</i> , <code>allValuesFrom</code> in OWL).	$\forall R.C$, where R is the relation (property) and C is the class that constrains all values for related individuals
existential quantification	Existential quantification is used to specify a class as the set of all individuals that are connected via a particular property to at least one individual which is an instance of a certain class (<i>i.e.</i> , <code>someValuesFrom</code> in OWL).	$\exists R.C$, where R is the relation (property) and C is the class that constrains some values of related individuals
individual value	Individual value restrictions are used to specify classes of individuals that are related to one particular individual (<i>i.e.</i> , <code>hasValue</code> in OWL).	$\forall R.I$, where R is the relation (property) and I is the individual
exact cardinality	Cardinality (number) restrictions specify classes by restricting the cardinality on the sets of fillers for roles (relationships, or properties in OWL). Exact cardinality restrictions restrict the cardinality of possible fillers to exactly the number specified.	$= n R$ (for unqualified restrictions) $= n R.C$ (for qualified restrictions, <i>i.e.</i> , including <code>onClass</code> or <code>on DataRange</code>)
maximum cardinality	Maximum cardinality restrictions restrict the cardinality of possible fillers to at most the number specified (inclusive).	$\leq n R$ (for unqualified restrictions) $\leq n R.C$ (for qualified restrictions)
minimum cardinality	Minimum cardinality restrictions restrict the cardinality of possible fillers to at least the number specified (inclusive).	$\geq n R$ (for unqualified restrictions) $\geq n R.C$ (for qualified restrictions)
Class Axioms		
equivalent classes	Two classes are considered equivalent if they contain exactly the same individuals.	$\equiv C$
disjoint classes	Disjointness means that membership in one class specifically excludes membership in another.	$\neg C$
Property Axioms		
complex role inclusions	Role inclusions allow [object] properties to be chained together in a sequence that is a subproperty of a higher-level property.	$R \circ R$

Note that in the case of complex restrictions, where there are nested elements in parentheses, the “dot notation” used as a separator between a property and the role filler is replaced with the embedded parenthetical filler definition. A “role” from a description logic perspective is essentially a property in OWL, and the role “filler” is the class or individual that provides the value for that role in a given axiom (*i.e.*, in a restriction or other logic expression).

Table 7.1: Robotic Service Ontology Metadata

Metadata Term	Value
OntologyIRI	https://www.omg.org/spec/RoSO/RoboticServiceOntology/
rdfs:label	Robotic Service Ontology
dct:abstract	The Robotic Service Ontology (RoSO) ontology provides the core concepts required to integrate robotics services with other robotics ontologies, such as the IEEE Standard Ontologies for Robotics and Automation, IEEE1972-2015, also known as CORA.
cmns-av:copyright	Copyright © 2023-2025 Japan Robot Association
cmns-av:copyright	Copyright © 2023-2025 Korea Association of Robot Industry
cmns-av:copyright	Copyright © 2023-2025 Shibaura Institute of Technology
cmns-av:copyright	Copyright © 2023-2025 National Institute of Advanced Industrial Science and Technology, Japan
cmns-av:copyright	Copyright © 2023-2024 Université Sorbonne Paris Nord
cmns-av:copyright	Copyright © 2023-2025 Object Management Group
dct:references	http://purl.org/dc/terms/
dct:references	http://www.w3.org/2004/02/skos/core#
dct:title	Robotic Service Ontology
owl:versionIRI	https://www.omg.org/spec/RoSO/20250801/RoboticServiceOntology/

Table 7.2: Robotic Service Ontology Details

Properties

Name	Annotations	Property Axioms
<i>canRepresent</i> (can represent)	<u>Definition</u> : can represent a person	<u>Domain</u> : roso:Avatar <u>Range</u> : roso:Person
<i>hasAttribute</i> (has attribute)	<u>Definition</u> : has feature or is delimited by	<u>Parent Property</u> : cmns-cls:isCharacterizedBy
<i>hasRegion</i> (has region)	<u>Definition</u> : indicates a demarcated area on the surface of the Earth	<u>Parent Property</u> : roso:isLocatedAt <u>Domain</u> : roso:Region <u>Range</u> : lcc-cr:GeographicalRegion
<i>hasRole</i> (has role)	<u>Definition</u> : represents agent's (or agent group's) role in service	<u>Parent Property</u> : cmns-cls:isCharacterizedBy <u>Domain</u> : cmns-pts:Agent U roso:AgentGroup <u>Range</u> : roso:AgentRole
<i>isCapableOf</i> (is capable of)	<u>Definition</u> : represents agent's capability to execute a role or function in service	<u>Parent Property</u> : roso:hasAttribute <u>Domain</u> : cmns-pts:Agent <u>Range</u> : roso:Function
<i>isLocatedAt</i> (is located at)	<u>Definition</u> : relates something to a location, which might be physical or virtual	<u>Domain</u> : roso:Point U roso:Region U roso:Site <u>Range</u> : lcc-cr:Location
<i>isProvidedBy</i> (is provided by)	<u>Definition</u> : is made available by	<u>InverseOf</u> : roso:provides
<i>isSituatesAt</i> (is situated at)	<u>Definition</u> : is placed at <u>Note</u> : something may be situated at some site, or in some setting, situation, or context.	<u>InverseOf</u> : roso:situates
<i>provides</i> (provides)	<u>Definition</u> : makes something available	<u>Domain</u> : roso:Facility <u>Range</u> : roso:Function
<i>situates</i> (situates)	<u>Definition</u> : indicates the place, setting, or context in which something is placed	<u>Domain</u> : roso:Site <u>Range</u> : roso:Facility

Classes

Name	Annotations	Class Expressions
AgentGroup (agent group)	<u>Definition</u> : collection of agents (people, organizations, software agents, robots, etc.) considered as a unit	<u>Parent Class</u> : cmns-col:Collection <u>PropertyRestriction</u> : $\forall \text{hasMember.Agent}$
AgentRole (agent role)	<u>Definition</u> : a role an agent can perform <u>Note</u> : The relationship between an agent or an agent group and an agent role is represented by a <i>hasRole</i> attribute	<u>Parent Class</u> : cmns-rlcmp:FunctionalRole
Avatar (avatar)	<u>Definition</u> : an agent that represents a person and provides the person functions of remote control and communication stream to interact with other agents in the robotic service environment	<u>Parent Class</u> : cmns-pts:Agent
Avatar Robot (avatar robot)	<u>Definition</u> : a robot that represents a person and provides the person functions of remote control and communication stream to interact with other agents in the robotic service environment	<u>Parent Class</u> : roso:Robot, roso:Avatar
ConceptualThing (conceptual thing)	<u>Definition</u> : a foundation to all classes that represents abstract concepts	<u>Parent Class</u> : owl:Thing
Direction (direction)	<u>Definition</u> : a spatial amount typically represented as a spatial vector that an object is moving	<u>Parent Class</u> : roso:SpatialThing
Facility (facility)	<u>Definition</u> : something established to serve a particular purpose, make some course of action or operation easier, or provide some capability or service	<u>Parent Class</u> : cmns-rlcmp:FunctionalRole
Function (function)	<u>Definition</u> : activity a component actuates something or senses status of or changes in the environment	<u>Parent Class</u> : roso:ConceptualThing
Person (person)	<u>Definition</u> : an agent that perform roles in interaction with other agents, but not a robot <u>Note</u> : a person in a service environment can be both a service provider and a service receiver as an agent	<u>Parent Class</u> : cmns-pts:Agent
PersonGroup (person group)	<u>Definition</u> : collection of persons considered as a unit	<u>Parent Class</u> : roso:AgentGroup <u>PropertyRestriction</u> : $\forall \text{hasMember.Person}$
Point (point)	<u>Definition</u> : a spatial point as a target of actuation or a spatial point where an event is observed	<u>Parent Class</u> : roso:SpatialThing
Posture (posture)	<u>Definition</u> : a spatial amount typically represented as a set of spatial vector to describe the posture of an object	<u>Parent Class</u> : roso:SpatialThing
PhysicalThing (physical thing)	<u>Definition</u> : an abstract placeholder to organize physical entities in robotic service environment	<u>Parent Class</u> : owl:Thing
Region (region)	<u>Definition</u> : a spatial area typically where a sensor can observe	<u>Parent Class</u> : roso:SpatialThing
Robot (robot)	<u>Definition</u> : an agent that provides service to other agents autonomously or controlled remotely	<u>Parent Class</u> : cmns-pts:Agent <u>Class Axiom</u> : $\neg \text{roso:Person}$
RobotGroup (robot group)	<u>Definition</u> : collection of robots considered as a unit	<u>Parent Class</u> : roso:AgentGroup <u>PropertyRestriction</u> : $\forall \text{hasMember.Robot}$
ServiceProvider (service provider)	<u>Definition</u> : a role of an agent or agent group that provides services	<u>Parent Class</u> : roso:AgentRole

ServiceReceiver (service receiver)	<u>Definition</u> : a role of an agent or agent group that receives services	<u>Parent Class</u> : roso:AgentRole
Site (site)	<u>Definition</u> : place, setting, or context in which something, such as a facility, is situated <u>Note</u> : A physical site has certain characteristics that contribute to the context it provides, including area, shape, accessibility, and in the case of a geographic site, landforms, soil and ground conditions, climate, and so forth	<u>Parent Class</u> : cmns-rlcmp:Role
SpatialInterval (spatial interval)	<u>Definition</u> : a spatial distance typically as a limit that actuators can work safely or that a sensor can distinguish targets	<u>Parent Class</u> : roso:SpatialThing
SpatialThing (spatial thing)	<u>Definition</u> : a foundation to all classes that represents spatial entities such as points and spatial amounts such as distances	<u>Parent Class</u> : owl:Thing

7.2 Robotic Service Interaction Ontology

Vocabularies to describe events and actions in interaction is defined in Figure 5 and Figure 6. Those vocabularies are used in service implementation in conjunction with entities in the primitive ontology.

The metadata of the Robotic Service Interaction Ontology are provided in Table 7.3. The detailed annotations and axioms that comprise the Robotic Service Interaction Ontology are provided in Table 7.4.

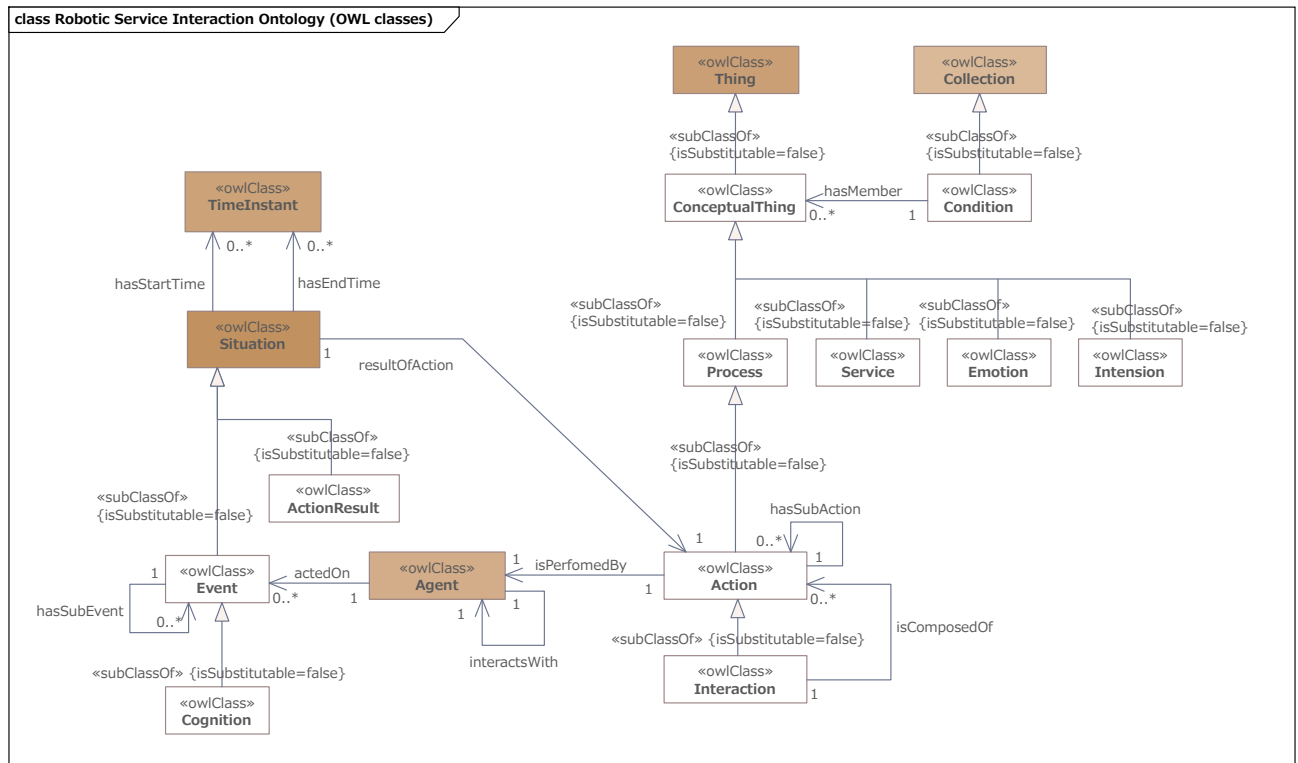


Figure 5 Robotic Service Interaction Ontology (OWL classes)

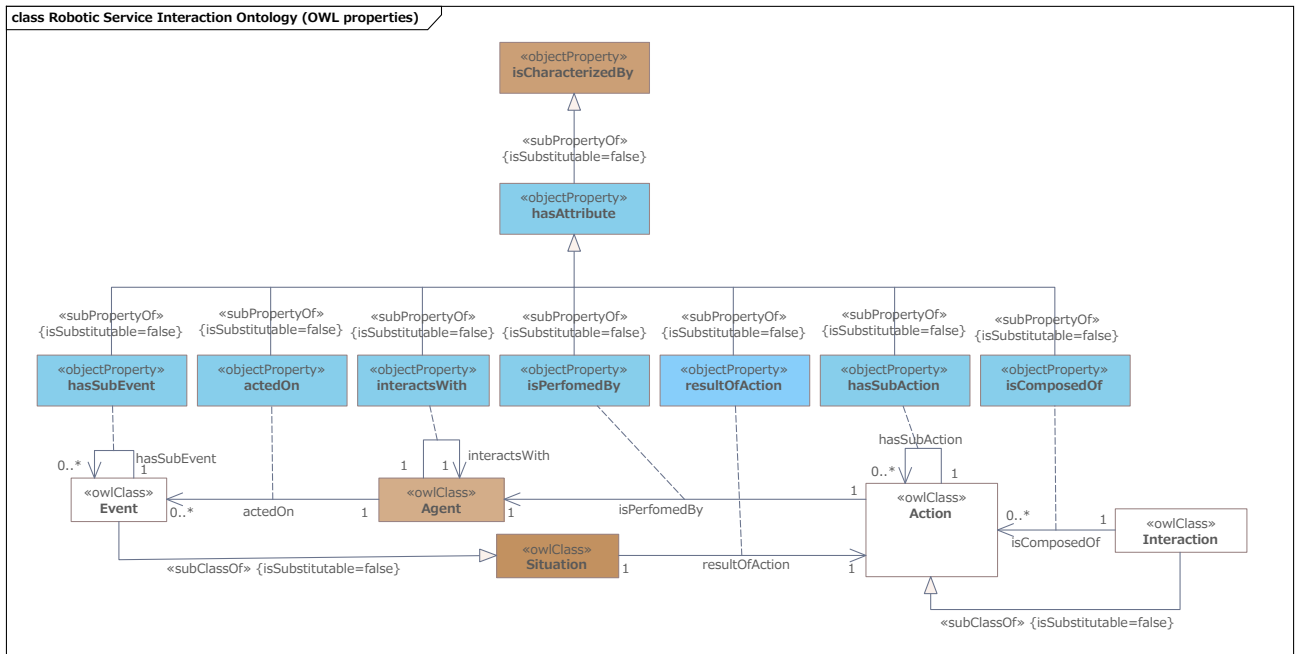


Figure 6 Robotic Service Interaction Ontology (OWL properties).

Table 7.3: Robotic Service Interaction Ontology Metadata

Metadata Term	Value
OntologyIRI	https://www.omg.org/spec/RoSO/RoboticServiceInteractionOntology/
rdfs:label	Robotic Service Interaction Ontology
dct:abstract	The Robotic Service Ontology (RoSO) interaction ontology extends the main RoSO ontology to define various interactions that a robotic service might have.
cmns-av:copyright	Copyright © 2023-2025 Japan Robot Association
cmns-av:copyright	Copyright © 2023-2025 Korea Association of Robot Industry
cmns-av:copyright	Copyright © 2023-2025 Shibaura Institute of Technology
cmns-av:copyright	Copyright © 2023-2025 National Institute of Advanced Industrial Science and Technology, Japan
cmns-av:copyright	Copyright © 2023-2024 Université Sorbonne Paris Nord
cmns-av:copyright	Copyright © 2023-2025 Object Management Group
dct:references	http://purl.org/dc/terms/
dct:references	http://www.w3.org/2004/02/skos/core#
dct:title	Robotic Interaction Ontology
owl:versionIRI	https://www.omg.org/spec/RoSO/20250801/RoboticServiceInteractionOntology/

Table 7.4: Robotic Service Interaction Ontology Details

Properties

Name	Annotations	Property Axioms
<i>actedOn</i> (acted on)	<u>Definition</u> : indicates an agent involved in an event	<u>Parent Property</u> : <i>roso:hasAttribute</i> <u>Domain</u> : <i>roso:Event</i> <u>Range</u> : <i>cmns-pts:Agent</i>
<i>hasSubAction</i> (has sub action)	<u>Definition</u> : indicates a subsequent action	<u>Parent Property</u> : <i>roso:hasAttribute</i> <u>Domain</u> : <i>roso-inct:Action</i> <u>Range</u> : <i>roso-inct:Action</i>

<i>hasSubEvent</i> (has sub event)	<u>Definition</u> : indicates a subsequent event	<u>Parent Property</u> : roso:hasAttribute <u>Domain</u> : roso-inct:Event <u>Range</u> : roso-inct:Event
<i>interactsWith</i> (interacts with)	<u>Definition</u> : indicates an agent as target of interaction	<u>Parent Property</u> : roso:hasAttribute <u>Domain</u> : cmns-pts:Agent <u>Range</u> : cmns-pts:Agent
<i>isPerformedBy</i> (is performed by)	<u>Definition</u> : indicates an agent that causes an action	<u>Parent Property</u> : roso:hasAttribute <u>Domain</u> : cmns-pts:Agent <u>Range</u> : roso-inct:Action
<i>resultOfAction</i> (results of action)	<u>Definition</u> : indicates a causal relationship between an action and a situation	<u>Parent Property</u> : roso:hasAttribute <u>Domain</u> : roso-inct:Action <u>Range</u> : cmns-pts:Situation

Classes

Name	Annotations	Class Expressions
Action (action)	<u>Definition</u> : an event that an agent causes to change the status of the environment or other agents <u>Note</u> : a sequence of actions is represented by using <i>hasSubAction</i> property	<u>Parent Class</u> : roso-inct:Process
ActionResult (action result)	<u>Definition</u> : a situation caused by an action performed by an agent or agent group	<u>Parent Class</u> : cmns-pts:Situation
Condition (condition)	<u>Definition</u> : collection of conceptual things such as actions, situations, and agents' internal status	<u>Parent Class</u> : cmns-col:Collection <u>PropertyRestriction</u> : \forall hasMember.ConceptualThing
Cognition (cognition)	<u>Definition</u> : agent's internal status that is caused by receiving events and changes its internal states such as Emotion or Intention or sometimes causes actions directly	<u>Parent Class</u> : roso:Event
Emotion (emotion)	<u>Definition</u> : agent's internal status that causes action and is changed by receiving events or cognitions	<u>Parent Class</u> : roso:ConceptualThing
Event (event)	<u>Definition</u> : a situation caused by something in the environment <u>Note</u> : a sequence of events is represented by using <i>hasSubEvent</i> property	<u>Parent Class</u> : roso:Situation
EventDetection (event detection)	<u>Definition</u> : representation of an event detection as an event, which is caused by a component to notify a real-world event detected by the component of services that utilize the component	<u>Parent Class</u> : roso-fnct:Event
Intention (intention)	<u>Definition</u> : agent's internal status that causes action and is changed by receiving events, cognitions, or emotions	<u>Parent Class</u> : roso:ConceptualThing
Interaction (interaction)	<u>Definition</u> : an action that occurs between two or more agents that has a <i>performer</i> and one or more <i>targets</i> of the action	<u>Parent Class</u> : roso-inct:Action
Process (process)	<u>Definition</u> : structured set of activities involving various enterprise entities designed and organized for a given purpose	<u>Parent Class</u> : roso:ConceptualThing
Service (service)	<u>Definition</u> : intangible activity performed by some party for the benefit of another party	<u>Parent Class</u> : roso:ConceptualThing

7.3 Robotic Service Function Ontology

Abstract part of the vocabularies to describe robotic functional component is described in Figure 7 and 8.

The metadata of the Robotic Service Ontology are provided in Table 7.5. The detailed annotations and axioms that comprise the Robotic Service Ontology are provided in Table 7.6.

Details of robotic functional components are to be defined in each implementation using this ontology as well as RoIS Person Detection examples in Annex A.

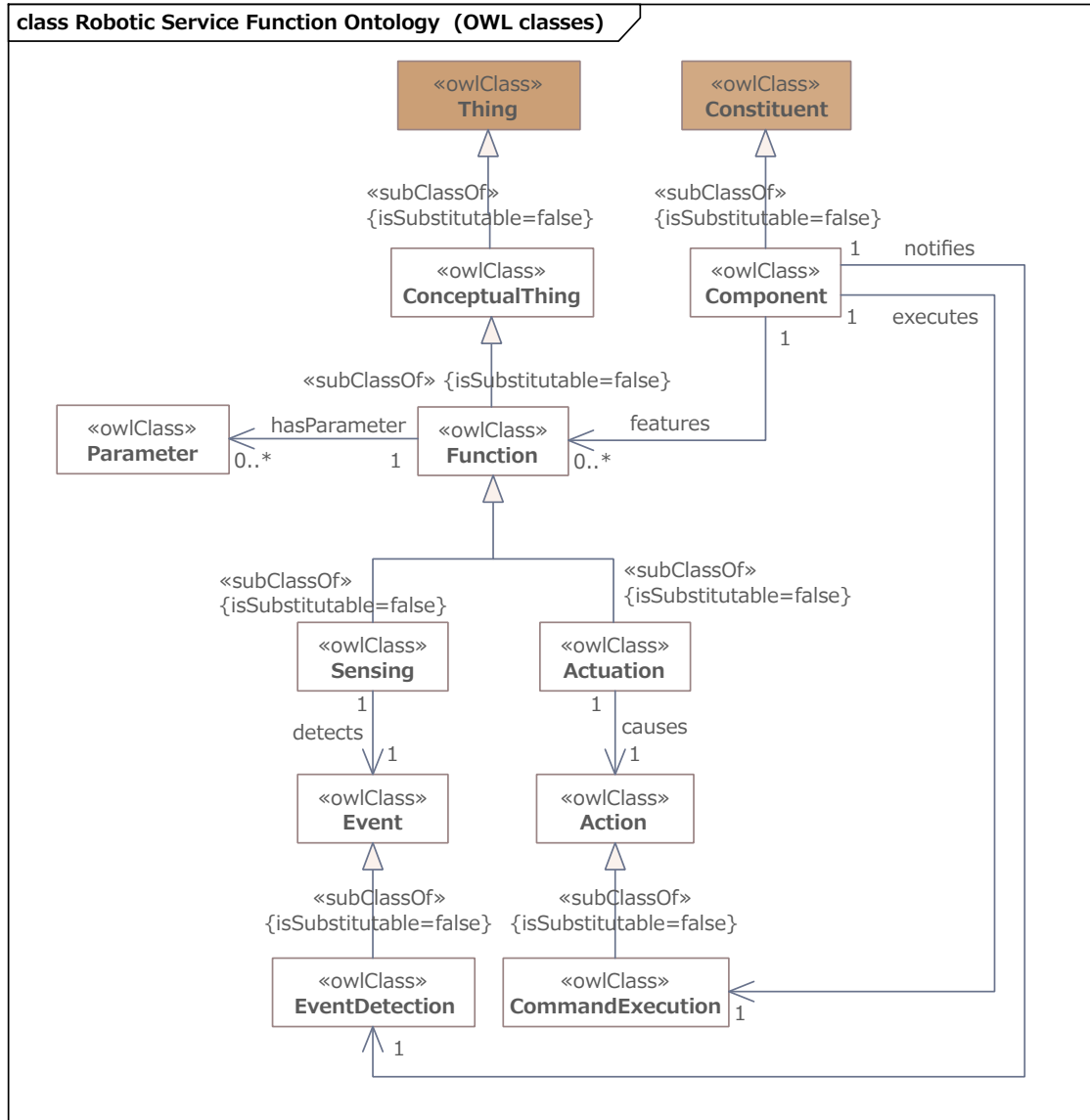


Figure 7 Robotic Service Function Ontology (OWL classes).

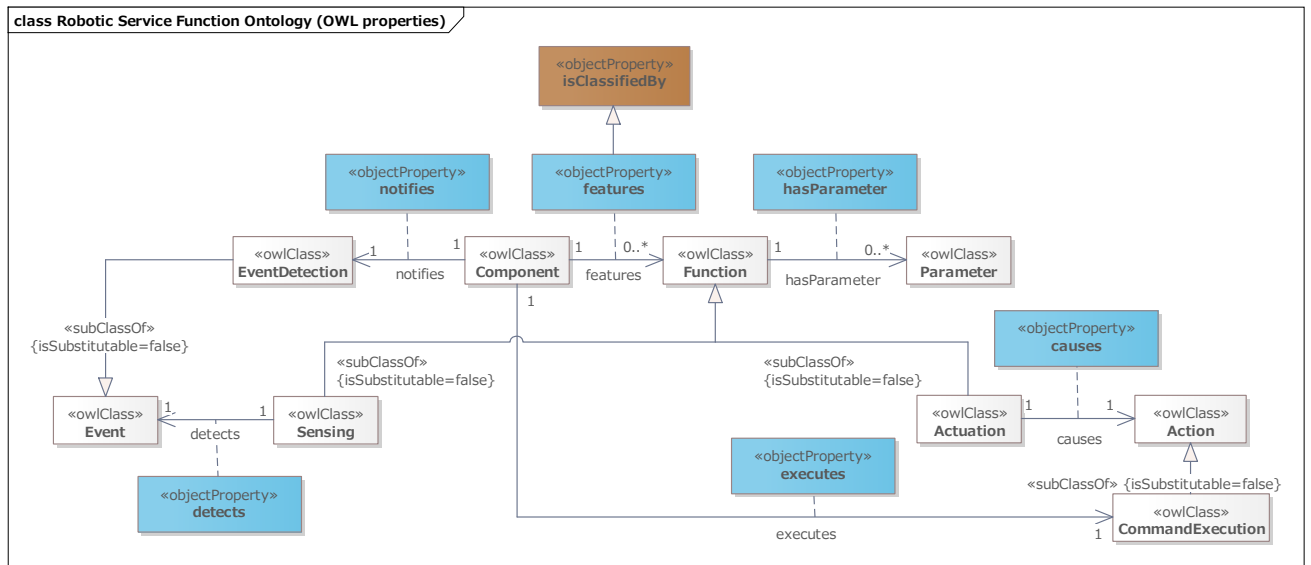


Figure 8 Robotic Service Function Ontology (OWL properties).

Vocabularies to describe the relationship between Component and Function are defined as follows.

Table 7.5: Robotic Service Function Ontology Metadata

Metadata Term	Value
OntologyIRI	https://www.omg.org/spec/RoSO/RoboticServiceFunctionOntology/
rdfs:label	Robotic Service Function Ontology
dct:abstract	The Robotic Service Ontology (RoSO) function ontology extends the main RoSO ontology to define various functions that a robotic service might perform.
cmns-av:copyright	Copyright © 2023–2025 Japan Robot Association
cmns-av:copyright	Copyright © 2023–2025 Korea Association of Robot Industry
cmns-av:copyright	Copyright © 2023–2025 Shibaura Institute of Technology
cmns-av:copyright	Copyright © 2023–2025 National Institute of Advanced Industrial Science and Technology, Japan
cmns-av:copyright	Copyright © 2023–2024 Université Sorbonne Paris Nord
cmns-av:copyright	Copyright © 2023–2025 Object Management Group
dct:references	http://purl.org/dc/terms/
dct:references	http://www.w3.org/2004/02/skos/core#
dct:title	Robotic Interaction Ontology
owl:versionIRI	https://www.omg.org/spec/RoSO/20250801/RoboticServiceFunctionOntology/

Table 7.6: Robotic Service Function Ontology Details

Properties

Name	Annotations	Property Axioms
<i>causes</i> (causes)	<u>Definition</u> : represents actions that a function can actuate	<u>Domain</u> : roso-fnct:Actuation <u>Range</u> : roso-inct:Action
<i>detects</i> (detects)	<u>Definition</u> : represents events that a function can sense	<u>Domain</u> : roso-fnct:Sensing <u>Range</u> : roso-inct:Event
<i>executes</i> (executes)	<u>Definition</u> : represents execution of an action commanded to a component	<u>Domain</u> : roso-fnct:Component

		<u>Range:</u> roso-fnct:CommandExecution
<i>features</i> (features)	<u>Definition:</u> represents functions that a component can provide	<u>Parent Property:</u> cmns-cls:isClassifiedBy <u>Domain:</u> roso-fnct:Component <u>Range:</u> roso:Function
<i>hasParameter</i> (has parameter)	<u>Definition:</u> represents parameters that a function has	<u>Domain:</u> roso:Function <u>Range:</u> roso-fnct:Parameter
<i>notifies</i> (notifies)	<u>Definition:</u> represents notification of an event detected by a component	<u>Domain:</u> roso-fnct:Component <u>Range:</u> roso-fnct:EventDetection

Classes

Name	Annotations	Class Expressions
Actuation (actuation)	<u>Definition:</u> a function to actuate something	<u>Parent Class:</u> roso:Function <u>Disjoint With:</u> roso-fnct:Sensing
CommandExecution (command execution)	<u>Definition:</u> representation of a command execution as an action, which is caused by a component as a response to an execution request from services that utilize the component	<u>Parent Class:</u> roso-inct:Action
Component (component)	<u>Definition:</u> a functional module that provides robotic functions such as actuation or sensing	<u>Parent Class:</u> cmns-col:Constituent
EventDetection (event detection)	<u>Definition:</u> representation of an event notification as an event, which is caused by a component to notify a real-world event detected by the component of services that utilize the component	<u>Parent Class:</u> roso-inct:Event
Parameter (parameter)	<u>Definition:</u> a value that have effects on a behavior of a component's function	
Sensing (sensing)	<u>Definition:</u> a function to sense something	<u>Parent Class:</u> roso:Function <u>Disjoint With:</u> roso-fnct:Actuation

Annex A: RoIS Functional Components

(informative)

This section provides example cases of definition using RoSO. The first example focuses defining three RoIS basic functional components to illustrate the usage of RoSO ontology. RoIS specific vocabularies are defined in Section A.1, followed by three examples of RoIS functional components in sections A.2 (Person Detection), A.3 (Person Localization) and A.4 (Follow). Finally Section A.5 demonstrates how to describe additional requirements for Person Detection using RoSO vocabularies.

A.1 RoIS Functional Component Ontology

Data types of parameters are statically defined as sub classes of RoSO data types. Parameters used in RoIS functional components are defined as properties and range of them are defined upon RoSO vocabularies. RoIS basic functional components are defined as subclasses of `roso:Sensor` or `roso:Actuator`.

Table A.1: Robotic Functional Service (RoIS) Component Ontology Metadata

Metadata Term	Value
OntologyIRI	https://www.omg.org/spec/RoSO/Example/RoboticInteractionServiceComponentOntology/
<code>rdfs:label</code>	Robotic Interaction Service (RoIS) Component Ontology
<code>dct:abstract</code>	The Robotic Interaction Service Components Ontology provides vocabularies to describe RoIS basic functional components
<code>cmns-av:copyright</code>	Copyright © 2022-2025 Japan Robot Association
<code>cmns-av:copyright</code>	Copyright © 2022-2025 Korea Association of Robot Industry
<code>cmns-av:copyright</code>	Copyright © 2023-2025 Shibaura Institute of Technology
<code>cmns-av:copyright</code>	Copyright © 2023-2025 Advanced Institute of Science and Technology, Japan
<code>cmns-av:copyright</code>	Copyright © 2023-2024 Université Sorbonne Paris Nord
<code>cmns-av:copyright</code>	Copyright © 2023-2025 Object Management Group
<code>dct:references</code>	http://purl.org/dc/terms/
<code>dct:references</code>	http://www.w3.org/2004/02/skos/core#
<code>dct:title</code>	Robotic Interaction Service Component Ontology
<code>owl:versionIRI</code>	https://www.omg.org/spec/RoSO/20250801/Example/RoboticInteractionServiceComponentOntology/

Table A.2: Robotic Functional Service (RoIS) Component Ontology Details

Properties

Name	Annotations	Property Axioms
<i>hasDetectionRegion</i> (has detection region)	<u>Definition</u> : indicates a region in which a component can detect targets	<u>Parent Property</u> : <code>roso:hasAttribute</code> <u>Domain</u> : <code>roso:Function</code> <u>Range</u> : <code>roso:Region</code>
<i>hasDetectionThreshold</i> (has detection threshold)	<u>Definition</u> : indicates a spatial interval by which a component can distinguish detected targets	<u>Parent Property</u> : <code>roso:hasAttribute</code> <u>Domain</u> : <code>roso:Function</code> <u>Range</u> : <code>roso:SpatialInterval</code>
<i>hasDetectionTimelimit</i> (has detection timelimit)	<u>Definition</u> : indicates a time limit within which a component is expected to detect the target	<u>Parent Property</u> : <code>roso:hasAttribute</code> <u>Domain</u> : <code>roso:Function</code> <u>Range</u> : <code>cmns-dt:TimeInterval</code>

<i>hasMaximumInterval</i> (has maximum interval)	<u>Definition:</u> indicates a periodic interval within which a component notifies events in maximum	<u>Parent Property:</u> roso:hasAttribute <u>Domain:</u> roso:Function <u>Range:</u> cmns-dt:TimeInterval
<i>hasMinimumDistance</i> (has minimum distance)	<u>Definition:</u> indicates a minimum spatial distance that a robot can approach while following the target	<u>Parent Property:</u> roso:hasAttribute <u>Domain:</u> roso:Function <u>Range:</u> rois:SpatialInterval
<i>HasMinimumInterval</i> (has minimum interval)	<u>Definition:</u> indicates a periodic interval by which a component can detect targets	<u>Parent Property:</u> roso:hasAttribute <u>Domain:</u> roso:Function <u>Range:</u> cmns-dt:TimeInterval
<i>hasTarget</i> (has target)	<u>Definition:</u> indicates an agent or an object as a target of the function	<u>Parent Property:</u> roso:hasAttribute <u>Domain:</u> roso:Function <u>Range:</u> cmns-pts:Agent U roso:PhysicalThing
<i>hasTimeLimit</i> (has time limit)	<u>Definition:</u> indicates a time limit by which a component completes the function	<u>Parent Property:</u> roso:hasAttribute <u>Domain:</u> roso:Function <u>Range:</u> cmns-dt:TimeInstant

Classes

Name	Annotations	Class Expressions
AudioStreaming (audio streaming)	<u>Definition:</u> component function to transmit audio streaming	<u>Parent Class:</u> roso:Function
FaceDetection (face detection)	<u>Definition:</u> component function to count the number of faces detected in the detection region	<u>Parent Class:</u> roso:Sensing
FaceLocalization (face localization)	<u>Definition:</u> component function to localize positions of faces detected in the detection region	<u>Parent Class:</u> roso:Sensing
Follow (follow)	<u>Definition:</u> component function to move following a target agent	<u>Parent Class:</u> roso:Actuation
GestureRecognition (gesture recognition)	<u>Definition:</u> component function to recognize gestures represented by other agents	<u>Parent Class:</u> roso:Sensing
Move (move)	<u>Definition:</u> component function to move along the indicated path	<u>Parent Class:</u> roso:Actuation
Navigation (navigation)	<u>Definition:</u> component function to navigate another agent to the indicated goal point	<u>Parent Class:</u> roso:Actuation
SoundDetection (sound detection)	<u>Definition:</u> component function to count the number of sound sources detected in the detection region	<u>Parent Class:</u> roso:Sensing
SoundLocalization (sound localization)	<u>Definition:</u> component function to localize positions of sound sources detected in the detection region	<u>Parent Class:</u> roso:Sensing
SpeechRecognition (speech recognition)	<u>Definition:</u> component function to recognize speech sound to text	<u>Parent Class:</u> roso:Sensing
SpeechSynthesis (speech synthesis)	<u>Definition:</u> component function to synthesize speech sound from text	<u>Parent Class:</u> roso:Actuation
PersonDetection (person detection)	<u>Definition:</u> component function to count the number of persons detected in the detection region	<u>Parent Class:</u> roso:Sensing
PersoIdentification (person identification)	<u>Definition:</u> component function to identify persons detected in the detection region	<u>Parent Class:</u> roso:Sensing
PersonLocalization (person localization)	<u>Definition:</u> component function to localize positions of persons detected in the detection region	<u>Parent Class:</u> roso:Sensing
Reaction (reaction)	<u>Definition:</u> component function to perform motions to interact with other agents	<u>Parent Class:</u> roso:Actuation
VideoStreaming (video streaming)	<u>Definition:</u> component function to transmit video streaming	<u>Parent Class:</u> roso:Function

A.2 Person Detection

RoIS Person Detection component has an event message called ‘Person Detected.’ PersonDetectionEvent is defined as a subclass of ComponentEvent, which represents the real-world event ‘Person Detected.’ The relationship between function, component, and event is shown in the following figure.

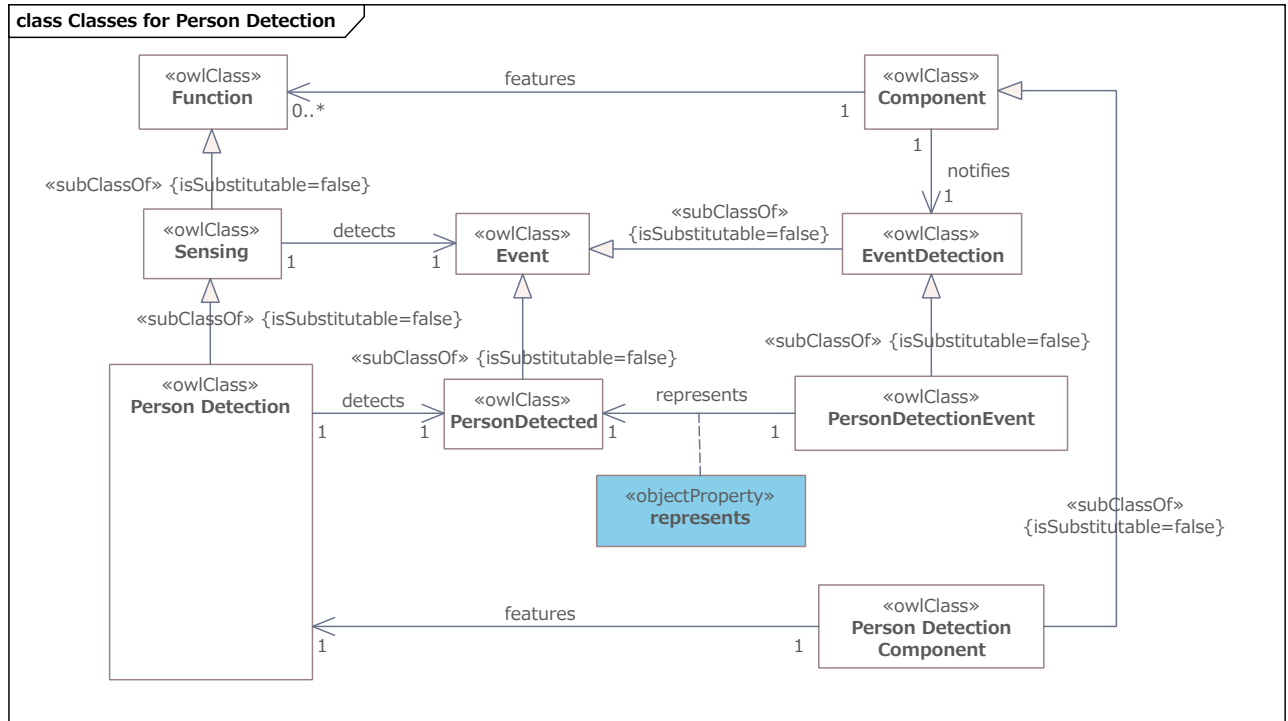


Figure 9 RoIS Person Detection Component

In addition to the previous example, RoIS Person Localization component has two parameters that represent constraints to the component. It also has an event message called ‘Person Localization.’ The parameters as restrictions are represented on the left side of Figure 10.



Different from the previous two examples, the RoIS Follow component has an actuation function. Figure 11 represents no events on the right side but several restriction parameters in the left side.



A.5 Additional Requirements for Person Detection

In addition to the requirements defined as RoIS parameters, service environments may have several extra requirements that are outside the scope of the RoIS message definitions, as both components and service applications cannot affect such values. Examples of additional requirements for Person Detection are shown on the left side of Figure 12 RoIS Person Detection Component with extra requirementsFigure 12.

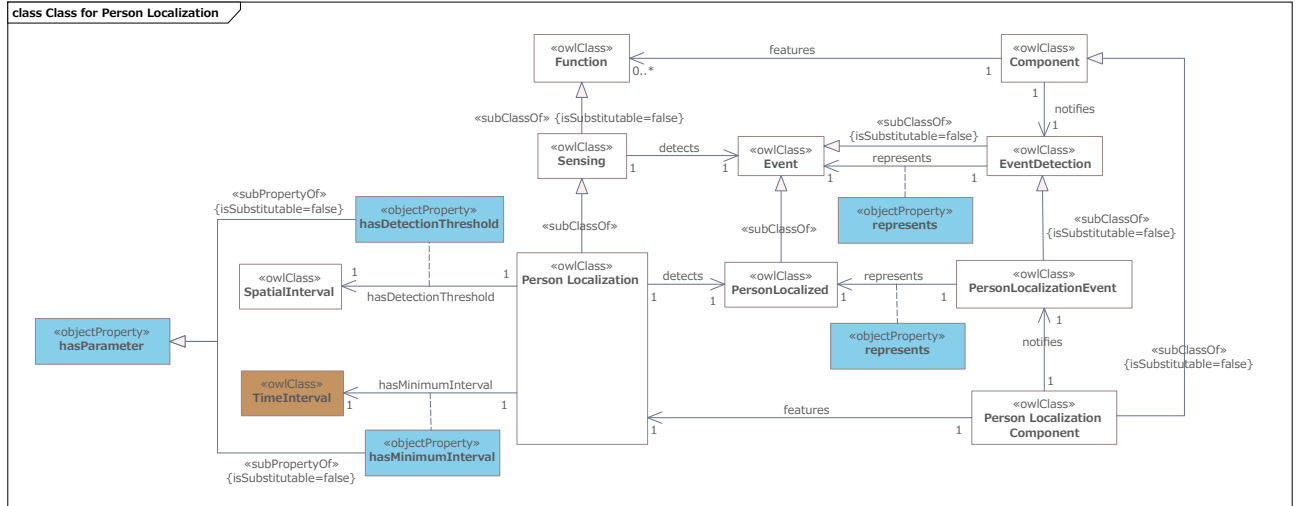


Figure 12 RoIS Person Detection Component with extra requirements

Annex B: RoIS Use Case Example

(informative)

B.1 Overview

Figure 11 shows an example of a robot scenario for a robotic reception service. In the RoIS development model, though the robot service developers choose appropriate robotic functional components to compose their robotic systems and services, there is no description of how they can choose such components suitable for their purpose.

In a closed environment, such as a flat 20m-by-20m square entrance lobby space, when a messenger robot finds a person in the environment, it then approaches the person. After identifying the person, the robot looks up if there are messages to the person, and then, if some messages are found, it tells the messages to the person.

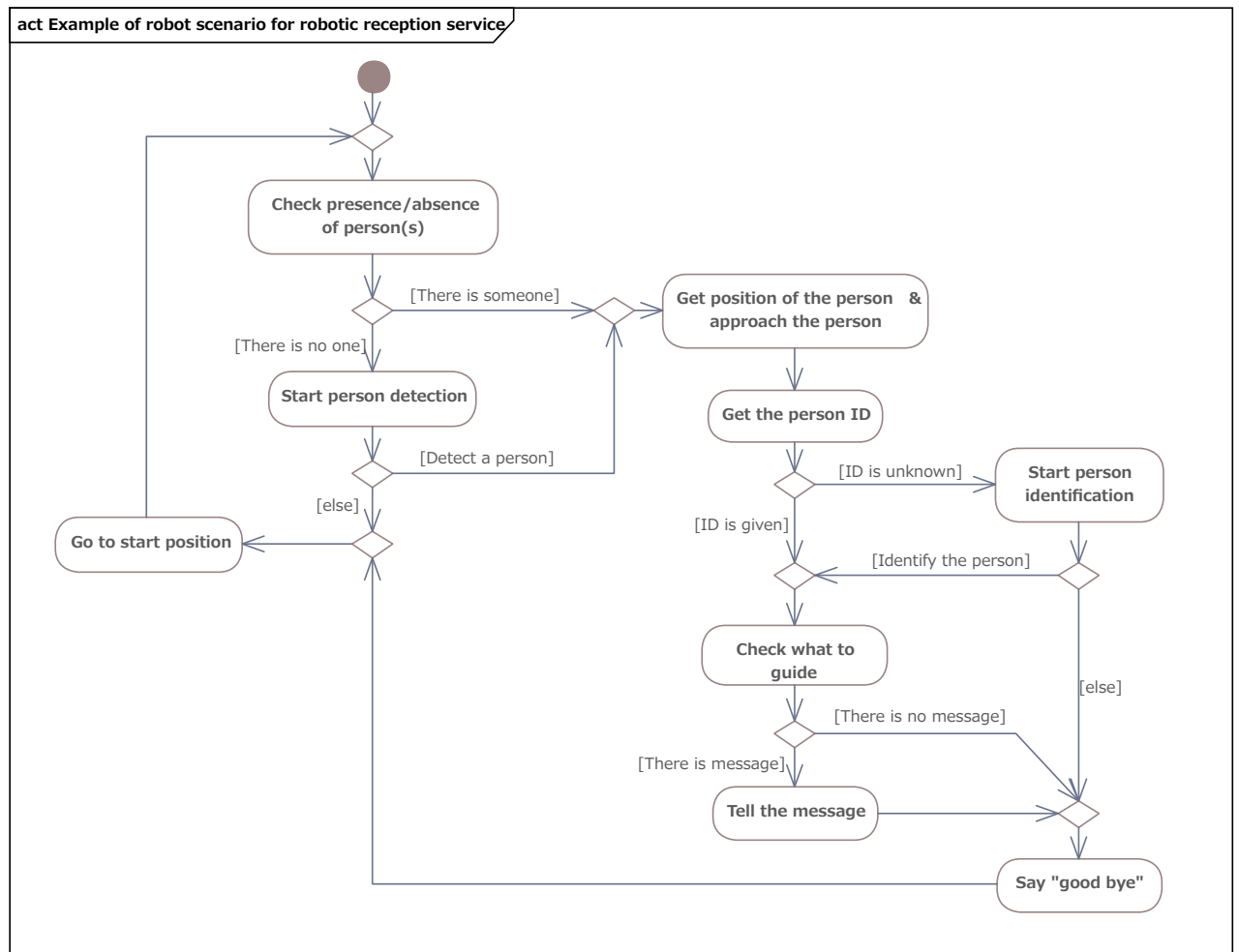


Figure 13 An example of Robotic Reception Service

B.2 Description of Service Entities

Figure 12 illustrates an RDF graph of the example of robotic reception service described with RoSO/RoIS ontologies.

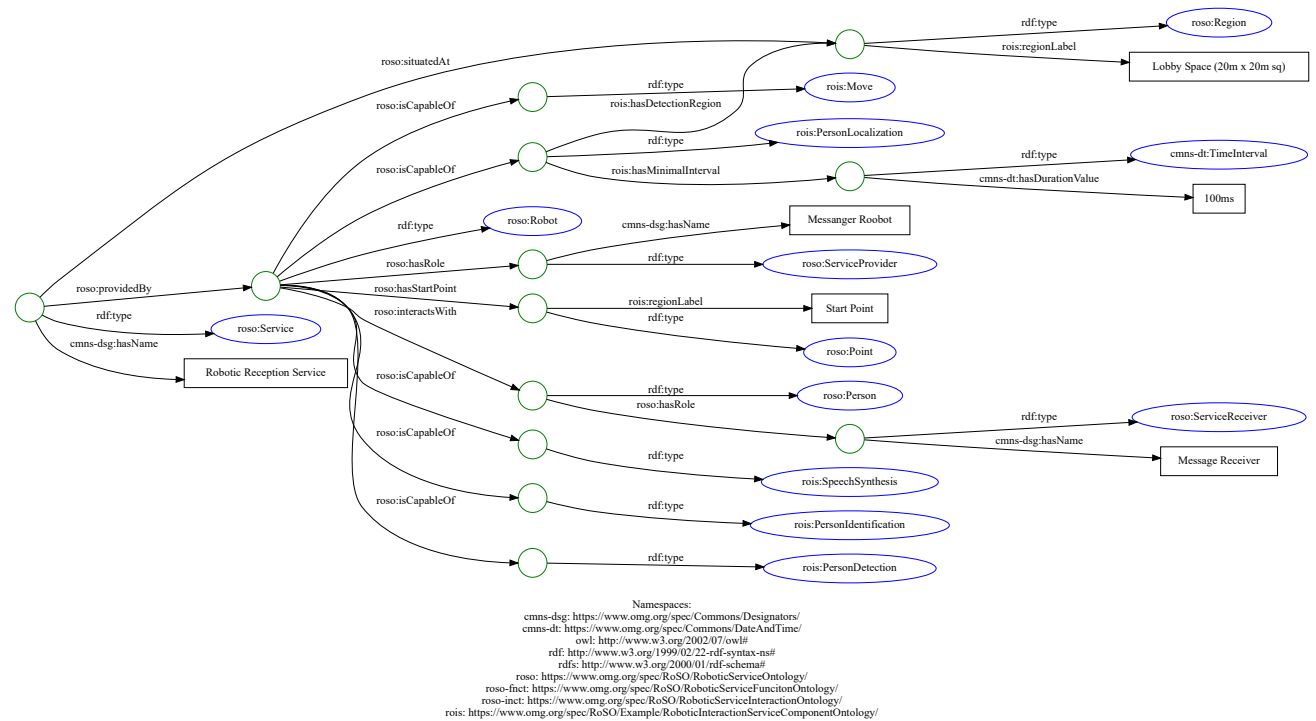


Figure 14 Description of Robotic Reception Service

Annex C: Cybernetic Avatar Service Use Case Example

(informative)

C.1 Product explanation at large stores

C.1.1 Overview

A store clerk remotely operates a semi-autonomous tele-operated robot (CA) to explain/recommend products to customers who come to the store. Regarding the location-fixed type CA, the CA is installed next to the product to be explained/recommended, and when the customer comes near the CA, the CA automatically plays the prepared explanation/recommendation contents. When a customer verbally asks a question to the CA, the question is transmitted to the clerk who is the tele-operator, and the clerk answers verbally or by selecting prepared answer contents with U/I. Regarding the movable type CA, in addition to the location-fixed type service, it will approach the customer to start the service, guide the customer to the location of the product.

C.1.2 Benefit

For the store clerk, since it is possible to respond without going to the site, it is not only possible to save the physical strength to stand all day for explanation and save travel time, and it is not necessary to be in the same store. It is possible to respond from other store or home. It will also be possible to provide services such as complying with the customer's national language from other country.

For customers, it is difficult to ask about products in stores with few store clerks or in stores where store clerks are busy. CA makes easier to ask about products. In addition, it is difficult to find what you want to ask from predetermined question items such as reading product advertisements or interactive digital signage, but with CA you can ask directly verbally, so stress is reduced.

Another advantage is that it can prevent infection such as COVID-19 for both clerks and customers.

C.1.3 Deployment Example

[Service from a location-fixed type CA]

A location-fixed type semi-autonomous tele-operated robot (CA) is installed on a shelf next to a product which is to be recommended to customers.

The CA is capable to find customers around the shelf by using a person detection component that can detect up to 10 persons in 150 cm from the CA.

The CA tries to connect to one of the CA's tele-operators when it detects customers within the range.

The CA is also capable to detect the position (direction and distance) of customers within the same detection range so that the CA can turn to the near-by customer (or a group of customers) before starting recommendation.

The CA is not capable of autonomous conversation that means it does not have any facility for speech recognition.

The CA is capable to transmit the customers speech (audio and video signal) to the tele-operator of the CA.

When a customer stops by the CA for more than 0.3 seconds (that requires the location of persons are to be updated 0.1 second frequency), the CA initiates interaction with the customer automatically just playing a pre-defined motion and speech. A reaction component and a speech synthesis component are required on the CA.

After the tele-operator clerk is ready connected, the CA receives commands for reaction and speech from the clerk.

If there aren't any operators assigned, the CA plays pre-recorded recommendation without interacting with the customers.

Figure 15 Cyberneic Avatar Shopping Service

C.2.1 Overview

C.2.2 Benefit

For customers, it is easier to ask questions in companies where CAs are located at reception entrances or where many mobile type CAs are in operation. Also, unlike interactive digital signage, it is difficult to search for what you want to ask from predetermined question items, but with CA you can ask directly verbally, so stress is alleviated.

C.2.3 Deployment Example

[Service from a movable-type CA]

The CA is capable to find visitors around the receptionist desk by using a person detection component that can detect up to 10 persons in 150 cm from the CA.

The CA is also capable to detect the position (direction and distance) of visitors within the same detection range so that the CA can move to the near-by visitor (or a group of visitors) before start greeting or guiding.

The CA is capable to transmit the visitors speech (audio and video signal) to the tele-operator of the CA.

After the tele-operator receptionist is ready connected, the CA receives commands for reaction and speech from the operator.

[illegible]

C.3 Take a lesson in a class room

It is a service that allows students who cannot attend school for some reason to remotely operate a semi-autonomous tele-operated robot (CA) to participate in classes at school from home. A student who is a remote operator can check the surroundings with video and audio through the CA. Student can also verbally speak through CA. Regarding the location-fixed type CA, install the CA on the student's desk in the classroom. Recognize the behavior of teachers and other students through CA, and participate in lessons with other students in the classroom. Regarding the movable-type CA, they can move around the school, participate in classes in other classrooms, and chat with other students during breaks.

If a student cannot attend school due to a physical disability, CA allows them to continue their studies at school. Many cases have been reported in which, for those who cannot attend school due to a mental disorder such as autism spectrum disorder (ASD), the use of CA reduces the stress of communicating with others or enables them to communicate with others.

Teachers will no longer need to provide special classes for students who cannot come to school.

C.3.3 Deployment Example

The service from a location-fixed CA is described here as an example though the service from a movable-type CA is also available but similar to each other.

[Service from a location-fixed CA]

A location-fixed type semi-autonomous tele-operated robot (CA) is put in a classroom at school which represents a student who is learning from home.

The CA is capable to pay and represent attention to the teachers and students who are talking to the CA by using a sound localization component that can detect sounds direction from the CA and a reaction component so that the CA can turn to the near-by students or teachers (or a group of students, or a group of teachers) while learning in the classroom.

The CA is capable to transmit the student speech (audio and video signal) to the tele-operating student.

The CA is not capable of autonomous conversation that means it does not have any facility for speech recognition.

The CA is capable to synthesize speech voice for students who may not want to represent their own voice.

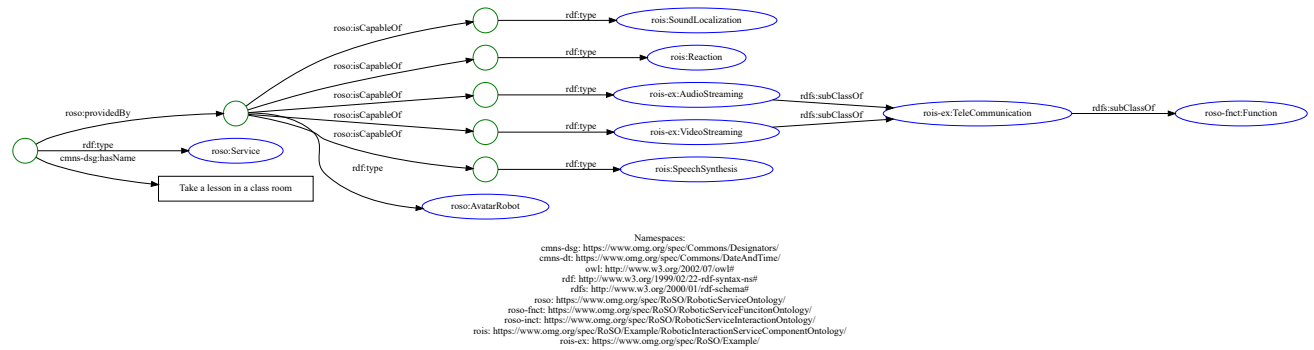


Figure 17 Cybernetic Avatar Class Room Service.

This page intentionally left blank.